

Specifications for load files for the Skills Education and Training Management Information System MR (SETMIS-MR)

Version: 1.01

Contents

1	Purpose	2
2	Scope and applicability of the standard.....	2
3	General information	2
3.1	Data submission file formats.....	2
3.2	Frequency of submissions	2
3.3	Transmission of submission	2
3.4	Use of the term ETQE.....	2
4	File dependencies	3
5	Data submission files	4
5.1	Provider	4
5.2	Employer	15
5.3	Non NQF Intervention.....	26
5.4	Person	30
5.5	Person Designation	44
5.6	Learnership Enrolment.....	49
5.7	Qualification Enrolment	56
5.8	Non NQF Intervention Enrolments	66
5.9	Unit Standard Enrolment	74
5.10	Trade Test.....	84
5.11	Internship Placement	89
6	Lookup codes	94
7	Revision History	94
8	Glossary.....	95

1 Purpose

The Skills Education and Training Management Information System (SETMIS) is a unit record based information system that stores and maintains unit records of Skills Education and Training data related to Sector Education and Training Authorities (SETAs) and their providers, employers, assessors, moderators and learners. The data content of SETMIS is primarily maintained and supplied by SETAs. The SETAs create electronic data submission files in standard formats and transmit them to the Department of Higher Education and Training (DHET) to be loaded into SETMIS.

The purpose of this specification is to provide SETAs with a description of the standard layout, content and business rules for the submission of data related to the Monitoring Reports (MR) to SETMIS.

2 Scope and applicability of the standard

This standard applies to all SETAs.

3 General information

3.1 Data submission file formats

The file format for all SETMIS data submission files is fixed length record ASCII files. In other words each record in a file takes up the same amount of space as all of the other records in the same file, regardless of how many characters are in each field. Each record must be terminated by a Microsoft compatible end of line character (CR+LF).

3.2 Frequency of submissions

The requirements in regard to how often the DHET requires SETAs to submit to SETMIS can be found at the following link:

<https://webapps.dhet.gov.za/USUS.aspx>

3.3 Transmission of submission

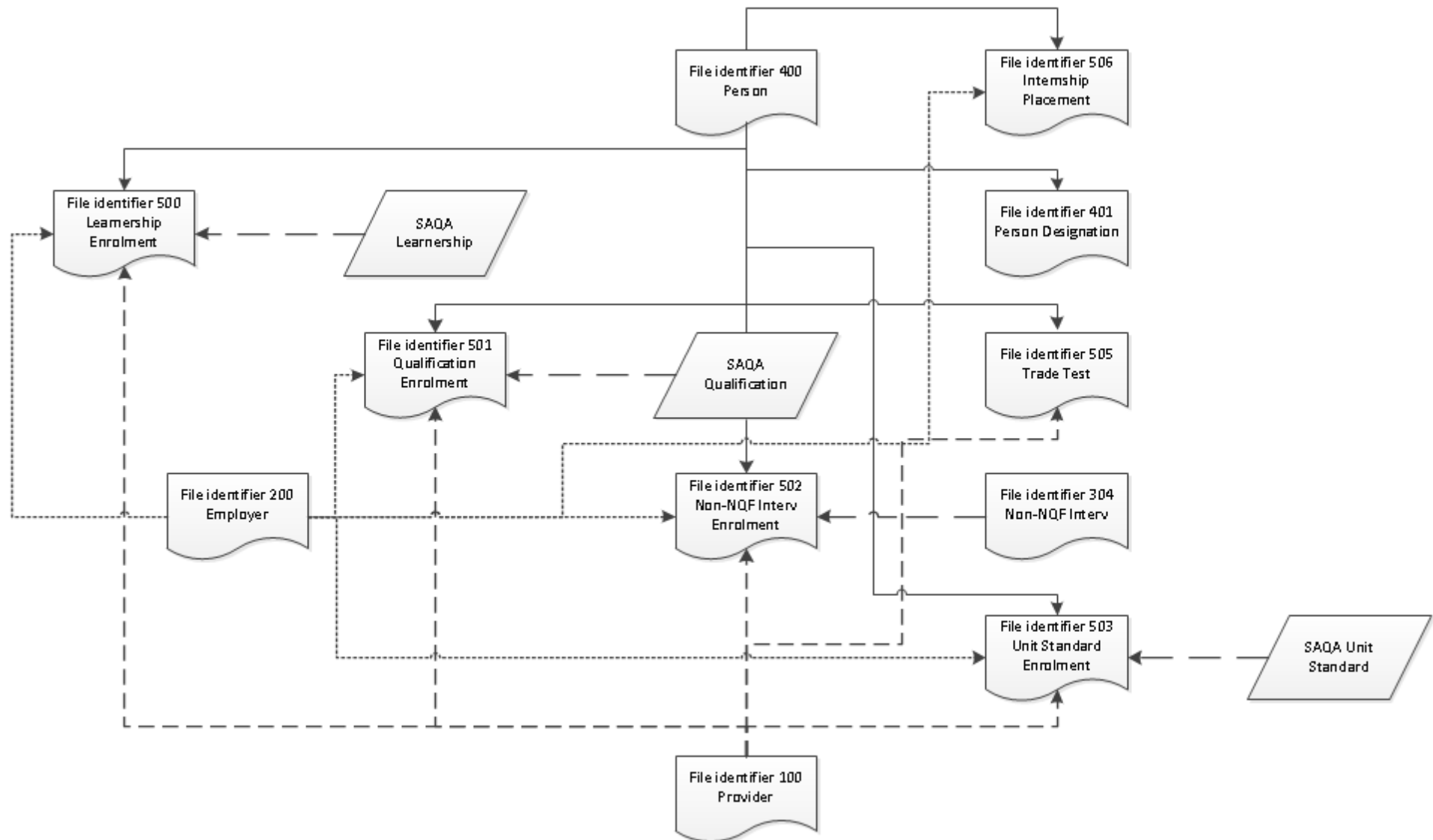
All data submissions must be validated using the data validation utility that is distributed to all SETAs by the Department of Higher Education and Training (DHET). The DHET data validation utility will prepare the data submission in a predetermined format as required for loading into SETMIS if the data submission conforms to the minimum data requirements as defined in this document. Thereafter the data validation utility will allow the user to submit the data submission to SETMIS.

The DHET will not accept any SETMIS data submission that have not been validated and transmitted to SETMIS using the DHET data validation utility.

3.4 Use of the term ETQE

This document makes use of the acronym ETQE (Education and Training Quality Entity), which within the scope of this document replaces the acronym ETQA (Education and Training Quality Assurance body) which is no longer an official acronym (since 2012). The term is used to denote a Quality Council (QC) or its delegates, as recorded on the National Learners' Records Database (NLRD), and it is acknowledged that this is not an official term.

4 File dependencies



5 Data submission files

5.1 Provider

File code 100

File naming standard

[Code]_0006_100_v001_YYYYMMDD.dat where:

- [Code] is the submitting ETQE's mnemonic identifier as recorded on the National Learners' Records Database in the format cccc. For example AGRI indicates the Agriculture Sector Education and Training Authority.
- 0006 indicates that the recipient information system to which this data will be submitted is SETMIS.
- v001 indicates that the submission has been extracted in accordance with version 1 of this specification
- YYYYMMDD represents the date on which the data submission was created.
- .dat is the file extension

Description

This file describes providers that have been accredited by the SETA.

This file is a modified version of the National Learners' Records Database (NLRD) File Number 21

General information:

A count of the number of records found in the file will be recorded in the aggregated report under the General information heading.

The **Date_Stamp** field must reflect the date on which a particular record was last updated. The field will be used by the recipient system to ensure that an older version of a record does not overwrite a more recent version of a record.

Submission requirements: Submission of this file is mandatory.

File record length: The length of each record must be exactly 800.

File fields

Field Name	Provider_Code	Field Number	1
Start Position	1	Field Length	20
Content Rules			
<ul style="list-style-type: none"> • This field may not be left blank • Field may not start with a space. If the value provided contains leading spaces then all leading spaces will be trimmed from the value during further validation of the data value provided • Uppercase value in field may only contain characters ABCDEFGHIJKLMNOPQRSTUVWXYZ1234567890@#&+() \/:._- 			
Business Rules (compliance required)			
<ul style="list-style-type: none"> • The combination of Provider_Code and Provider_ETQE_Id must be unique 			
Business Rules (informational)			
<ul style="list-style-type: none"> • Not applicable 			

Field Name	Provider_ETQE_Id	Field Number	2
Start Position	21	Field Length	10
Content Rules			
<ul style="list-style-type: none"> • This field may not be left blank 			

Field Name	Provider_ETQE_Id	Field Number	2
<ul style="list-style-type: none"> Field may not start with a space. If the value provided contains leading spaces then all leading spaces will be trimmed from the value during further validation of the data value provided Field may only contain whole numbers 			
Business Rules (compliance required)			
<ul style="list-style-type: none"> Field must contain a valid Provider_ETQE_Id 			
Business Rules (informational)			
<ul style="list-style-type: none"> Not applicable 			

Field Name	SIC_Code	Field Number	3
Start Position	31	Field Length	10
Content Rules			
<ul style="list-style-type: none"> This field may be left blank Field may not start with a space. If the value provided contains leading spaces then all leading spaces will be trimmed from the value during further validation of the data value provided Uppercase value in field may only contain characters ABCDEFGHIJKLMNOPQRSTUVWXYZ1234567890@#&+() \/:;_`'- 			
Business Rules (compliance required)			
<ul style="list-style-type: none"> Field must contain a valid SIC_Code 			
Business Rules (informational)			
<ul style="list-style-type: none"> Not applicable 			

Field Name	Provider_Name	Field Number	4
Start Position	41	Field Length	70
Content Rules			
<ul style="list-style-type: none"> This field may not be left blank Field may not start with a space. If the value provided contains leading spaces then all leading spaces will be trimmed from the value during further validation of the data value provided Uppercase value in field may only contain characters ABCDEFGHIJKLMNOPQRSTUVWXYZ1234567890@#&+() \/:;_`'- 			
Business Rules (compliance required)			
<ul style="list-style-type: none"> Uppercase value in field may not contain characters %UNKNOWN% or %AS ABOVE% or %SOOS BO% or %DELETE% or N/A or NA or U or NONE or GEEN or O or TEST or %ONTBREEK% or NIL or - or - May not contain duplicated values once characters like PTY,LTD,CC , CC,,&,+ , AND ,T/A,BK,LIMITED, CK,_,,),(have been stripped from the value 			
Business Rules (informational)			
<ul style="list-style-type: none"> Not applicable 			

Field Name	Provider_Type_Id	Field Number	5
Start Position	111	Field Length	10
Content Rules			
<ul style="list-style-type: none"> This field may not be left blank Field may not start with a space. If the value provided contains leading spaces then all leading spaces will be trimmed from the value during further validation of the data value provided Field may only contain whole numbers 			
Business Rules (compliance required)			
<ul style="list-style-type: none"> Field must contain a valid Provider_Type_Id 			
Business Rules (informational)			
<ul style="list-style-type: none"> Not applicable 			

Field Name	Provider_Postal_Address_1	Field Number	6
Start Position	121	Field Length	50
Content Rules			

Field Name	Provider_Postal_Address_1	Field Number	6
<ul style="list-style-type: none"> This field may not be left blank Field may not start with a space. If the value provided contains leading spaces then all leading spaces will be trimmed from the value during further validation of the data value provided Uppercase value in field may only contain characters ABCDEFGHIJKLMNOPQRSTUVWXYZ - 1234567890#&()/\.:_`', 			
Business Rules (compliance required)			
<ul style="list-style-type: none"> Uppercase value in field may not contain characters %UNKNOWN% or %AS ABOVE% or %SOOS BO% or %DELETE% or N/A or NA or U or NONE or GEEN or O or TEST or %ONTBREEK% or NIL or - or - The field may not contain a value that contains only numbers 			
Business Rules (informational)			
<ul style="list-style-type: none"> Uppercase value in field should not contain characters %ZZZ% or %XXX% or %ADDRES% 			

Field Name	Provider_Postal_Address_2	Field Number	7
Start Position	171	Field Length	50
Content Rules			
<ul style="list-style-type: none"> This field may not be left blank Field may not start with a space. If the value provided contains leading spaces then all leading spaces will be trimmed from the value during further validation of the data value provided Uppercase value in field may only contain characters ABCDEFGHIJKLMNOPQRSTUVWXYZ - 1234567890#&()/\.:_`', 			
Business Rules (compliance required)			
<ul style="list-style-type: none"> Uppercase value in field may not contain characters %UNKNOWN% or %AS ABOVE% or %SOOS BO% or %DELETE% or N/A or NA or U or NONE or GEEN or O or TEST or %ONTBREEK% or NIL or - or - The field may not contain a value that contains only numbers 			
Business Rules (informational)			
<ul style="list-style-type: none"> Uppercase value in field should not contain characters %ZZZ% or %XXX% or %ADDRES% 			

Field Name	Provider_Postal_Address_3	Field Number	8
Start Position	221	Field Length	50
Content Rules			
<ul style="list-style-type: none"> This field may be left blank Field may not start with a space. If the value provided contains leading spaces then all leading spaces will be trimmed from the value during further validation of the data value provided Uppercase value in field may only contain characters ABCDEFGHIJKLMNOPQRSTUVWXYZ - 1234567890#&()/\.:_`', 			
Business Rules (compliance required)			
<ul style="list-style-type: none"> Uppercase value in field may not contain characters %UNKNOWN% or %AS ABOVE% or %SOOS BO% or %DELETE% or N/A or NA or U or NONE or GEEN or O or TEST or %ONTBREEK% or NIL or - or - The field may not contain a value that contains only numbers Field may not have 4 consecutive numbers embedded in it 			
Business Rules (informational)			
<ul style="list-style-type: none"> Uppercase value in field should not contain characters %ZZZ% or %XXX% or %ADDRES% 			

Field Name	Provider_Postal_Address_Code	Field Number	9
Start Position	271	Field Length	4
Content Rules			
<ul style="list-style-type: none"> This field may not be left blank Field may not start with a space. If the value provided contains leading spaces then all leading spaces will be trimmed from the value during further validation of the data value provided Uppercase value in field may only contain characters 1234567890 			

Field Name	Provider_Postal_Address_Code	Field Number	9
Business Rules (compliance required)			
<ul style="list-style-type: none"> Length of field must be exactly 4 characters 			
Business Rules (informational)			
<ul style="list-style-type: none"> Not applicable 			

Field Name	Provider_Phone_Number	Field Number	10
Start Position	275	Field Length	20
Content Rules			
<ul style="list-style-type: none"> This field may be left blank Field may not start with a space. If the value provided contains leading spaces then all leading spaces will be trimmed from the value during further validation of the data value provided Uppercase value in field may only contain characters 1234567890 ()/- 			
Business Rules (compliance required)			
<ul style="list-style-type: none"> Uppercase value in field may not contain characters %UNKNOWN% or %AS ABOVE% or %SOOS BO% or %DELETE% or N/A or NA or U or NONE or GEEN or 0 or TEST or %ONTBREEK% or NIL or - or - 			
Business Rules (informational)			
<ul style="list-style-type: none"> Not applicable 			

Field Name	Provider_Fax_Number	Field Number	11
Start Position	295	Field Length	20
Content Rules			
<ul style="list-style-type: none"> This field may be left blank Field may not start with a space. If the value provided contains leading spaces then all leading spaces will be trimmed from the value during further validation of the data value provided Uppercase value in field may only contain characters 1234567890 ()/- 			
Business Rules (compliance required)			
<ul style="list-style-type: none"> Uppercase value in field may not contain characters %UNKNOWN% or %AS ABOVE% or %SOOS BO% or %DELETE% or N/A or NA or U or NONE or GEEN or 0 or TEST or %ONTBREEK% or NIL or - or - 			
Business Rules (informational)			
<ul style="list-style-type: none"> Not applicable 			

Field Name	Provider_Sars_Number	Field Number	12
Start Position	315	Field Length	20
Content Rules			
<ul style="list-style-type: none"> This field may be left blank Field may not start with a space. If the value provided contains leading spaces then all leading spaces will be trimmed from the value during further validation of the data value provided Uppercase value in field may only contain characters ABCDEFGHIJKLMNOPQRSTUVWXYZ1234567890@#&+() \/:;_- 			
Business Rules (compliance required)			
<ul style="list-style-type: none"> Not applicable 			
Business Rules (informational)			
<ul style="list-style-type: none"> Not applicable 			

Field Name	Provider_Contact_Name	Field Number	13
Start Position	335	Field Length	50
Content Rules			
<ul style="list-style-type: none"> This field may be left blank Field may not start with a space. If the value provided contains leading spaces then all leading spaces will be trimmed from the value during further validation of the data value provided Uppercase value in field may only contain characters ABCDEFGHIJKLMNOPQRSTUVWXYZ' - 			

Field Name	Provider_Contact_Name	Field Number	13
Business Rules (compliance required)			
<ul style="list-style-type: none"> Uppercase value in field may not contain characters %UNKNOWN% or %AS ABOVE% or %SOOS BO% or %DELETE% or N/A or 0 or TEST or %ONTBREEK% or NIL or - or – 			
Business Rules (informational)			
<ul style="list-style-type: none"> Uppercase value in field should not contain characters NA or U or NONE or GEEN 			

Field Name	Provider_Contact_Email_Address	Field Number	14
Start Position	385	Field Length	50
Content Rules			
<ul style="list-style-type: none"> This field may be left blank Field may not start with a space. If the value provided contains leading spaces then all leading spaces will be trimmed from the value during further validation of the data value provided Uppercase value in field may only contain characters ABCDEFGHIJKLMNOPQRSTUVWXYZ1234567890_.<>-@ 			
Business Rules (compliance required)			
<ul style="list-style-type: none"> Uppercase value in field may not contain characters %UNKNOWN% or %AS ABOVE% or %SOOS BO% or %DELETE% or N/A or NA or U or NONE or GEEN or 0 or TEST or %ONTBREEK% or NIL or - or – Field must contain the @ character 			
Business Rules (informational)			
<ul style="list-style-type: none"> Not applicable 			

Field Name	Provider_Contact_Phone_Number	Field Number	15
Start Position	435	Field Length	20
Content Rules			
<ul style="list-style-type: none"> This field may be left blank Field may not start with a space. If the value provided contains leading spaces then all leading spaces will be trimmed from the value during further validation of the data value provided Uppercase value in field may only contain characters 1234567890 ()/- 			
Business Rules (compliance required)			
<ul style="list-style-type: none"> Uppercase value in field may not contain characters %UNKNOWN% or %AS ABOVE% or %SOOS BO% or %DELETE% or N/A or NA or U or NONE or GEEN or 0 or TEST or %ONTBREEK% or NIL or - or – 			
Business Rules (informational)			
<ul style="list-style-type: none"> Not applicable 			

Field Name	Provider_Contact_Cell_Number	Field Number	16
Start Position	455	Field Length	20
Content Rules			
<ul style="list-style-type: none"> This field may be left blank Field may not start with a space. If the value provided contains leading spaces then all leading spaces will be trimmed from the value during further validation of the data value provided Uppercase value in field may only contain characters 1234567890 ()- 			
Business Rules (compliance required)			
<ul style="list-style-type: none"> Uppercase value in field may not contain characters %UNKNOWN% or %AS ABOVE% or %SOOS BO% or %DELETE% or N/A or NA or U or NONE or GEEN or 0 or TEST or %ONTBREEK% or NIL or - or – 			
Business Rules (informational)			
<ul style="list-style-type: none"> Not applicable 			

Field Name	Provider_Accreditation_Num	Field Number	17
Start Position	475	Field Length	20
Content Rules			

Field Name	Provider_Accreditation_Num	Field Number	17
<ul style="list-style-type: none"> This field may be left blank Field may not start with a space. If the value provided contains leading spaces then all leading spaces will be trimmed from the value during further validation of the data value provided Uppercase value in field may only contain characters ABCDEFGHIJKLMNOPQRSTUVWXYZ1234567890@#&+() \/:._- 			
Business Rules (compliance required)			
<ul style="list-style-type: none"> Not applicable 			
Business Rules (informational)			
<ul style="list-style-type: none"> Not applicable 			

Field Name	Provider_Start_Date	Field Number	18
Start Position	495	Field Length	8
Content Rules			
<ul style="list-style-type: none"> This field may not be left blank Field may not start with a space. If the value provided contains leading spaces then all leading spaces will be trimmed from the value during further validation of the data value provided Field may only contain a valid date in the format YYYYMMDD 			
Business Rules (compliance required)			
<ul style="list-style-type: none"> Provider_Start_Date may not be greater than Provider_End_Date Field may not have a value greater than today's date 			
Business Rules (informational)			
<ul style="list-style-type: none"> The system will display the maximum number of records with the same value for this field 			

Field Name	Provider_End_Date	Field Number	19
Start Position	503	Field Length	8
Content Rules			
<ul style="list-style-type: none"> This field may be left blank Field may not start with a space. If the value provided contains leading spaces then all leading spaces will be trimmed from the value during further validation of the data value provided Field may only contain a valid date in the format YYYYMMDD 			
Business Rules (compliance required)			
<ul style="list-style-type: none"> Not applicable 			
Business Rules (informational)			
<ul style="list-style-type: none"> The system will display the maximum number of records with the same value for this field 			

Field Name	Etqe_Decision_Number	Field Number	20
Start Position	511	Field Length	20
Content Rules			
<ul style="list-style-type: none"> This field may be left blank Field may not start with a space. If the value provided contains leading spaces then all leading spaces will be trimmed from the value during further validation of the data value provided Uppercase value in field may only contain characters ABCDEFGHIJKLMNOPQRSTUVWXYZ1234567890@#&+() \/:._- 			
Business Rules (compliance required)			
<ul style="list-style-type: none"> Not applicable 			
Business Rules (informational)			
<ul style="list-style-type: none"> Not applicable 			

Field Name	Provider_Class_Id	Field Number	21
Start Position	531	Field Length	10
Content Rules			
<ul style="list-style-type: none"> This field may not be left blank 			

Field Name	Provider_Class_Id	Field Number	21
<ul style="list-style-type: none"> Field may not start with a space. If the value provided contains leading spaces then all leading spaces will be trimmed from the value during further validation of the data value provided Field may only contain whole numbers 			
Business Rules (compliance required)			
<ul style="list-style-type: none"> Field must contain a valid Provider_Class_Id 			
Business Rules (informational)			
<ul style="list-style-type: none"> Not applicable 			

Field Name	Provider_Status_Id	Field Number	22
Start Position	541	Field Length	10
Content Rules			
<ul style="list-style-type: none"> This field may not be left blank Field may not start with a space. If the value provided contains leading spaces then all leading spaces will be trimmed from the value during further validation of the data value provided Field may only contain whole numbers 			
Business Rules (compliance required)			
<ul style="list-style-type: none"> Field must contain a valid Provider_Status_Id If Provider_Status_Id has a value of 513 then Provider_End_Date may not be blank If Provider_Status_Id does not have a value of 513 then Provider_End_Date must be blank 			
Business Rules (informational)			
<ul style="list-style-type: none"> Not applicable 			

Field Name	Province_Code	Field Number	23
Start Position	551	Field Length	2
Content Rules			
<ul style="list-style-type: none"> This field may not be left blank Field may not start with a space. If the value provided contains leading spaces then all leading spaces will be trimmed from the value during further validation of the data value provided Uppercase value in field may only contain characters ABCDEFGHIJKLMNOPQRSTUVWXYZ1234567890@#&+() \/:;_`'- 			
Business Rules (compliance required)			
<ul style="list-style-type: none"> Field must contain a valid Province_Code Field must have a value of X if Country_Code does not have a value of ZA and field may not have a value of X if Country_Code has a value of ZA 			
Business Rules (informational)			
<ul style="list-style-type: none"> Not applicable 			

Field Name	Country_Code	Field Number	24
Start Position	553	Field Length	4
Content Rules			
<ul style="list-style-type: none"> This field may not be left blank Field may not start with a space. If the value provided contains leading spaces then all leading spaces will be trimmed from the value during further validation of the data value provided Uppercase value in field may only contain characters ABCDEFGHIJKLMNOPQRSTUVWXYZ1234567890@#&+() \/:;_`'- 			
Business Rules (compliance required)			
<ul style="list-style-type: none"> Field must contain a valid Country_Code 			
Business Rules (informational)			
<ul style="list-style-type: none"> Not applicable 			

Field Name	Latitude_Degree	Field Number	25
Start Position	557	Field Length	3
Content Rules			

Field Name	Latitude_Degree	Field Number	25
<ul style="list-style-type: none"> This field may be left blank Field may not start with a space. If the value provided contains leading spaces then all leading spaces will be trimmed from the value during further validation of the data value provided Uppercase value in field may only contain characters 1234567890- 			
Business Rules (compliance required)			
<ul style="list-style-type: none"> If a value is provided for Latitude_Degree or Latitude_Minutes or Latitude_Seconds then a value must be for Latitude_Degree and Latitude_Minutes and Latitude_Seconds If a value is provided for Latitude_Degree and related fields then a value must be provided for Longitude_Degree and related fields Field must be a negative value, may not be greater than -22 and may not have a value less than -35 Value must be provided if Date_Stamp has a value great than 20170701 			
Business Rules (informational)			
<ul style="list-style-type: none"> Not applicable 			

Field Name	Latitude_Minutes	Field Number	26
Start Position	560	Field Length	2
Content Rules			
<ul style="list-style-type: none"> This field may be left blank Field may not start with a space. If the value provided contains leading spaces then all leading spaces will be trimmed from the value during further validation of the data value provided Field may only contain whole numbers 			
Business Rules (compliance required)			
<ul style="list-style-type: none"> Value must have a length of exactly 2 (leading zeros) and may not be greater than 59 			
Business Rules (informational)			
<ul style="list-style-type: none"> Not applicable 			

Field Name	Latitude_Seconds	Field Number	27
Start Position	562	Field Length	6
Content Rules			
<ul style="list-style-type: none"> This field may be left blank Field may not start with a space. If the value provided contains leading spaces then all leading spaces will be trimmed from the value during further validation of the data value provided Uppercase value in field may only contain characters 1234567890. 			
Business Rules (compliance required)			
<ul style="list-style-type: none"> Value must have a length of exactly 6 (nn.nnn) and may not be greater than 59.999 			
Business Rules (informational)			
<ul style="list-style-type: none"> Not applicable 			

Field Name	Longitude_Degree	Field Number	28
Start Position	568	Field Length	2
Content Rules			
<ul style="list-style-type: none"> This field may be left blank Field may not start with a space. If the value provided contains leading spaces then all leading spaces will be trimmed from the value during further validation of the data value provided Field may only contain whole numbers 			
Business Rules (compliance required)			
<ul style="list-style-type: none"> If a value is provided for Longitude_Degree and related fields then a value must be provided for Latitude_Degree and related fields If a value is provided for Longitude_Degree or Longitude_Minutes or Longitude_Seconds then a value must be for Longitude_Degree, Longitude_Minutes and Longitude_Seconds Value may not be greater than 33 and may not have a value less than 16 Value must be provided if Date_Stamp has a value great than 20170701 			
Business Rules (informational)			

Field Name	Longitude_Degree	Field Number	28
<ul style="list-style-type: none"> Not applicable 			

Field Name	Longitude_Minutes	Field Number	29
Start Position	570	Field Length	2
Content Rules			
<ul style="list-style-type: none"> This field may be left blank Field may not start with a space. If the value provided contains leading spaces then all leading spaces will be trimmed from the value during further validation of the data value provided Field may only contain whole numbers 			
Business Rules (compliance required)			
<ul style="list-style-type: none"> Value must have a length of exactly 2 (leading zeros) and may not be greater than 59 			
Business Rules (informational)			
<ul style="list-style-type: none"> Not applicable 			

Field Name	Longitude_Seconds	Field Number	30
Start Position	572	Field Length	6
Content Rules			
<ul style="list-style-type: none"> This field may be left blank Field may not start with a space. If the value provided contains leading spaces then all leading spaces will be trimmed from the value during further validation of the data value provided Uppercase value in field may only contain characters 1234567890. 			
Business Rules (compliance required)			
<ul style="list-style-type: none"> Value must have a length of exactly 6 (nn.nnn) and may not be greater than 59.999 			
Business Rules (informational)			
<ul style="list-style-type: none"> Not applicable 			

Field Name	Provider_Physical_Address_1	Field Number	31
Start Position	578	Field Length	50
Content Rules			
<ul style="list-style-type: none"> This field may not be left blank Field may not start with a space. If the value provided contains leading spaces then all leading spaces will be trimmed from the value during further validation of the data value provided Uppercase value in field may only contain characters ABCDEFGHIJKLMNOPQRSTUVWXYZ - 1234567890#&()/\.:_`', 			
Business Rules (compliance required)			
<ul style="list-style-type: none"> Uppercase value in field may not contain characters %UNKNOWN% or %AS ABOVE% or %SOOS BO% or %DELETE% or N/A or NA or U or NONE or GEEN or 0 or TEST or %ONTBREEK% or NIL or - or - The field may not contain a value that contains only numbers 			
Business Rules (informational)			
<ul style="list-style-type: none"> Uppercase value in field should not contain characters %ZZZ% or %XXX% or %ADDRES% 			

Field Name	Provider_Physical_Address_2	Field Number	32
Start Position	628	Field Length	50
Content Rules			
<ul style="list-style-type: none"> This field may not be left blank Field may not start with a space. If the value provided contains leading spaces then all leading spaces will be trimmed from the value during further validation of the data value provided Uppercase value in field may only contain characters ABCDEFGHIJKLMNOPQRSTUVWXYZ - 1234567890#&()/\.:_`', 			
Business Rules (compliance required)			

Field Name	Provider_Physical_Address_2	Field Number	32
<ul style="list-style-type: none"> Uppercase value in field may not contain characters %UNKNOWN% or %AS ABOVE% or %SOOS BO% or %DELETE% or N/A or NA or U or NONE or GEEN or O or TEST or %ONTBREEK% or NIL or - or - The field may not contain a value that contains only numbers 			
Business Rules (informational)			
<ul style="list-style-type: none"> Uppercase value in field should not contain characters %ZZZ% or %XXX% or %ADDRES% 			

Field Name	Provider_Physical_Address_3	Field Number	33
Start Position	678	Field Length	50
Content Rules			
<ul style="list-style-type: none"> This field may be left blank Field may not start with a space. If the value provided contains leading spaces then all leading spaces will be trimmed from the value during further validation of the data value provided Uppercase value in field may only contain characters ABCDEFGHIJKLMNOPQRSTUVWXYZ - 1234567890#&()/\.:_`', 			
Business Rules (compliance required)			
<ul style="list-style-type: none"> Uppercase value in field may not contain characters %UNKNOWN% or %AS ABOVE% or %SOOS BO% or %DELETE% or N/A or NA or U or NONE or GEEN or O or TEST or %ONTBREEK% or NIL or - or - The field may not contain a value that contains only numbers Field may not have 4 consecutive numbers embedded in it 			
Business Rules (informational)			
<ul style="list-style-type: none"> Uppercase value in field should not contain characters %ZZZ% or %XXX% or %ADDRES% 			

Field Name	Provider_Physical_Address_Code	Field Number	34
Start Position	728	Field Length	4
Content Rules			
<ul style="list-style-type: none"> This field may not be left blank Field may not start with a space. If the value provided contains leading spaces then all leading spaces will be trimmed from the value during further validation of the data value provided Uppercase value in field may only contain characters 1234567890 			
Business Rules (compliance required)			
<ul style="list-style-type: none"> Length of field must be exactly 4 characters 			
Business Rules (informational)			
<ul style="list-style-type: none"> Not applicable 			

Field Name	Provider_Website_Address	Field Number	35
Start Position	732	Field Length	50
Content Rules			
<ul style="list-style-type: none"> This field may be left blank Field may not start with a space. If the value provided contains leading spaces then all leading spaces will be trimmed from the value during further validation of the data value provided Uppercase value in field may only contain characters ABCDEFGHIJKLMNOPQRSTUVWXYZ - 1234567890#&()/\.:_`', 			
Business Rules (compliance required)			
<ul style="list-style-type: none"> Not applicable 			
Business Rules (informational)			
<ul style="list-style-type: none"> Not applicable 			

Field Name	SDL_No	Field Number	36
Start Position	782	Field Length	10
Content Rules			
<ul style="list-style-type: none"> This field may be left blank 			

Field Name	SDL_No	Field Number	36
<ul style="list-style-type: none"> Field may not start with a space. If the value provided contains leading spaces then all leading spaces will be trimmed from the value during further validation of the data value provided Value in field may only contain characters L0123456789 OR N0123456789 			
Business Rules (compliance required)			
<ul style="list-style-type: none"> The value in this field must be unique Value must have a length of exactly 10 Value must start with 'L' followed by 9 digits or 'N' followed by 9 digits (indicating a non-levy paying company) 			
Business Rules (informational)			
<ul style="list-style-type: none"> Not applicable 			

Field Name	Date_Stamp	Field Number	37
Start Position	792	Field Length	8
Content Rules			
<ul style="list-style-type: none"> This field may not be left blank Field may not start with a space. If the value provided contains leading spaces then all leading spaces will be trimmed from the value during further validation of the data value provided Field may only contain a valid date in the format YYYYMMDD 			
Business Rules (compliance required)			
<ul style="list-style-type: none"> Field may not have a value greater than today's date Year component of field value may not be less than 1900 			
Business Rules (informational)			
<ul style="list-style-type: none"> The system will display the maximum number of records with the same value for this field 			

5.2 Employer

File code 200

File naming standard

[Code]_0006_200_v001_YYYYMMDD.dat where:

- [Code] is the submitting ETQE's mnemonic identifier as recorded on the National Learners' Records Database in the format cccc. For example AGRI indicates the Agriculture Sector Education and Training Authority.
- 0006 indicates that the recipient information system to which this data will be submitted is SETMIS.
- v001 indicates that the submission has been extracted in accordance with version 1 of this specification
- YYYYMMDD represents the date on which the data submission was created.
- .dat is the file extension

Description

This file describes employers.

General information:

A count of the number of records found in the file will be recorded in the aggregated report under the General information heading.

The **Date_Stamp** field must reflect the date on which a particular record was last updated. The field will be used by the recipient system to ensure that an older version of a record does not overwrite a more recent version of a record.

Submission requirements: Submission of this file is mandatory.

File record length: The length of each record must be exactly 797.

File fields

Field Name	SDL_No	Field Number	1
Start Position	1	Field Length	10
Content Rules			
<ul style="list-style-type: none"> • This field may not be left blank • Field may not start with a space. If the value provided contains leading spaces then all leading spaces will be trimmed from the value during further validation of the data value provided • Value in field may only contain characters L0123456789 OR N0123456789 			
Business Rules (compliance required)			
<ul style="list-style-type: none"> • Value must have a length of exactly 10 • Value must start with 'L' followed by 9 digits or 'N' followed by 9 digits (indicating a non-levy paying company) • The combination of SDL_No and Site_No must be unique 			
Business Rules (informational)			
<ul style="list-style-type: none"> • Not applicable 			

Field Name	Site_No	Field Number	2
Start Position	11	Field Length	10
Content Rules			
<ul style="list-style-type: none"> • This field may not be left blank • Field may not start with a space. If the value provided contains leading spaces then all leading spaces will be trimmed from the value during further validation of the data value provided 			

Field Name	Site_No	Field Number	2
<ul style="list-style-type: none"> Uppercase value in field may only contain characters ABCDEFGHIJKLMNOPQRSTUVWXYZ1234567890@#&+() \/:_-'- 			
Business Rules (compliance required)			
<ul style="list-style-type: none"> Not applicable 			
Business Rules (informational)			
<ul style="list-style-type: none"> Not applicable 			

Field Name	SETA_Id	Field Number	3
Start Position	21	Field Length	3
Content Rules			
<ul style="list-style-type: none"> This field may not be left blank Field may not start with a space. If the value provided contains leading spaces then all leading spaces will be trimmed from the value during further validation of the data value provided Field may only contain whole numbers 			
Business Rules (compliance required)			
<ul style="list-style-type: none"> Field must contain a valid SETA_Id 			
Business Rules (informational)			
<ul style="list-style-type: none"> Not applicable 			

Field Name	SIC_Code	Field Number	4
Start Position	24	Field Length	10
Content Rules			
<ul style="list-style-type: none"> This field may be left blank Field may not start with a space. If the value provided contains leading spaces then all leading spaces will be trimmed from the value during further validation of the data value provided Uppercase value in field may only contain characters ABCDEFGHIJKLMNOPQRSTUVWXYZ1234567890@#&+() \/:_-'- 			
Business Rules (compliance required)			
<ul style="list-style-type: none"> Field must contain a valid SIC_Code 			
Business Rules (informational)			
<ul style="list-style-type: none"> Not applicable 			

Field Name	Employer_Registration_Number	Field Number	5
Start Position	34	Field Length	20
Content Rules			
<ul style="list-style-type: none"> This field may be left blank Field may not start with a space. If the value provided contains leading spaces then all leading spaces will be trimmed from the value during further validation of the data value provided Uppercase value in field may only contain characters ABCDEFGHIJKLMNOPQRSTUVWXYZ1234567890@#&+() \/:_-'- 			
Business Rules (compliance required)			
<ul style="list-style-type: none"> Not applicable 			
Business Rules (informational)			
<ul style="list-style-type: none"> Not applicable 			

Field Name	Employer_Company_Name	Field Number	6
Start Position	54	Field Length	70
Content Rules			
<ul style="list-style-type: none"> This field may not be left blank Field may not start with a space. If the value provided contains leading spaces then all leading spaces will be trimmed from the value during further validation of the data value provided Uppercase value in field may only contain characters ABCDEFGHIJKLMNOPQRSTUVWXYZ1234567890@#&+() \/:_-'- 			

Field Name	Employer_Company_Name	Field Number	6
Business Rules (compliance required)			
<ul style="list-style-type: none"> Uppercase value in field may not contain characters %UNKNOWN% or %AS ABOVE% or %SOOS BO% or %DELETE% or N/A or NA or U or NONE or GEEN or O or TEST or %ONTBREEK% or NIL or - or - 			
Business Rules (informational)			
<ul style="list-style-type: none"> Not applicable 			

Field Name	Employer_Trading_Name	Field Number	7
Start Position	124	Field Length	70
Content Rules			
<ul style="list-style-type: none"> This field may not be left blank Field may not start with a space. If the value provided contains leading spaces then all leading spaces will be trimmed from the value during further validation of the data value provided Uppercase value in field may only contain characters ABCDEFGHIJKLMNOPQRSTUVWXYZ1234567890@#&+() \/:;_-'- 			
Business Rules (compliance required)			
<ul style="list-style-type: none"> Uppercase value in field may not contain characters %UNKNOWN% or %AS ABOVE% or %SOOS BO% or %DELETE% or N/A or NA or U or NONE or GEEN or O or TEST or %ONTBREEK% or NIL or - or - 			
Business Rules (informational)			
<ul style="list-style-type: none"> Not applicable 			

Field Name	Employer_Postal_Address_1	Field Number	8
Start Position	194	Field Length	50
Content Rules			
<ul style="list-style-type: none"> This field may not be left blank Field may not start with a space. If the value provided contains leading spaces then all leading spaces will be trimmed from the value during further validation of the data value provided Uppercase value in field may only contain characters ABCDEFGHIJKLMNOPQRSTUVWXYZ - 1234567890#&() \/:;_-' 			
Business Rules (compliance required)			
<ul style="list-style-type: none"> Uppercase value in field may not contain characters %UNKNOWN% or %AS ABOVE% or %SOOS BO% or %DELETE% or N/A or NA or U or NONE or GEEN or O or TEST or %ONTBREEK% or NIL or - or - The field may not contain a value that contains only numbers 			
Business Rules (informational)			
<ul style="list-style-type: none"> Uppercase value in field should not contain characters %ZZZ% or %XXX% or %ADDRES% 			

Field Name	Employer_Postal_Address_2	Field Number	9
Start Position	244	Field Length	50
Content Rules			
<ul style="list-style-type: none"> This field may not be left blank Field may not start with a space. If the value provided contains leading spaces then all leading spaces will be trimmed from the value during further validation of the data value provided Uppercase value in field may only contain characters ABCDEFGHIJKLMNOPQRSTUVWXYZ - 1234567890#&() \/:;_-' 			
Business Rules (compliance required)			
<ul style="list-style-type: none"> Uppercase value in field may not contain characters %UNKNOWN% or %AS ABOVE% or %SOOS BO% or %DELETE% or N/A or NA or U or NONE or GEEN or O or TEST or %ONTBREEK% or NIL or - or - The field may not contain a value that contains only numbers 			
Business Rules (informational)			
<ul style="list-style-type: none"> Uppercase value in field should not contain characters %ZZZ% or %XXX% or %ADDRES% 			

Field Name	Employer_Postal_Address_3	Field Number	10
Start Position	294	Field Length	50
Content Rules			
<ul style="list-style-type: none"> • This field may be left blank • Field may not start with a space. If the value provided contains leading spaces then all leading spaces will be trimmed from the value during further validation of the data value provided • Uppercase value in field may only contain characters ABCDEFGHIJKLMNOPQRSTUVWXYZ - 1234567890#&()/\.:_`', 			
Business Rules (compliance required)			
<ul style="list-style-type: none"> • Uppercase value in field may not contain characters %UNKNOWN% or %AS ABOVE% or %SOOS BO% or %DELETE% or N/A or NA or U or NONE or GEEN or 0 or TEST or %ONTBREEK% or NIL or - or - • The field may not contain a value that contains only numbers • Field may not have 4 consecutive numbers embedded in it 			
Business Rules (informational)			
<ul style="list-style-type: none"> • Uppercase value in field should not contain characters %ZZZ% or %XXX% or %ADDRES% 			

Field Name	Employer_Postal_Address_Code	Field Number	11
Start Position	344	Field Length	4
Content Rules			
<ul style="list-style-type: none"> • This field may not be left blank • Field may not start with a space. If the value provided contains leading spaces then all leading spaces will be trimmed from the value during further validation of the data value provided • Uppercase value in field may only contain characters 1234567890 			
Business Rules (compliance required)			
<ul style="list-style-type: none"> • Length of field must be exactly 4 characters 			
Business Rules (informational)			
<ul style="list-style-type: none"> • Not applicable 			

Field Name	Employer_Physical_Address_1	Field Number	12
Start Position	348	Field Length	50
Content Rules			
<ul style="list-style-type: none"> • This field may not be left blank • Field may not start with a space. If the value provided contains leading spaces then all leading spaces will be trimmed from the value during further validation of the data value provided • Uppercase value in field may only contain characters ABCDEFGHIJKLMNOPQRSTUVWXYZ - 1234567890#&()/\.:_`', 			
Business Rules (compliance required)			
<ul style="list-style-type: none"> • Uppercase value in field may not contain characters %UNKNOWN% or %AS ABOVE% or %SOOS BO% or %DELETE% or N/A or NA or U or NONE or GEEN or 0 or TEST or %ONTBREEK% or NIL or - or - • The field may not contain a value that contains only numbers 			
Business Rules (informational)			
<ul style="list-style-type: none"> • Uppercase value in field should not contain characters %ZZZ% or %XXX% or %ADDRES% 			

Field Name	Employer_Physical_Address_2	Field Number	13
Start Position	398	Field Length	50
Content Rules			
<ul style="list-style-type: none"> • This field may not be left blank • Field may not start with a space. If the value provided contains leading spaces then all leading spaces will be trimmed from the value during further validation of the data value provided • Uppercase value in field may only contain characters ABCDEFGHIJKLMNOPQRSTUVWXYZ - 1234567890#&()/\.:_`', 			

Field Name	Employer_Physical_Address_2	Field Number	13
Business Rules (compliance required)			
<ul style="list-style-type: none"> Uppercase value in field may not contain characters %UNKNOWN% or %AS ABOVE% or %SOOS BO% or %DELETE% or N/A or NA or U or NONE or GEEN or 0 or TEST or %ONTBREEK% or NIL or - or - The field may not contain a value that contains only numbers 			
Business Rules (informational)			
<ul style="list-style-type: none"> Uppercase value in field should not contain characters %ZZZ% or %XXX% or %ADDRES% 			

Field Name	Employer_Physical_Address_3	Field Number	14
Start Position	448	Field Length	50
Content Rules			
<ul style="list-style-type: none"> This field may be left blank Field may not start with a space. If the value provided contains leading spaces then all leading spaces will be trimmed from the value during further validation of the data value provided Uppercase value in field may only contain characters ABCDEFGHIJKLMNOPQRSTUVWXYZ - 1234567890#&()/\.:_`', 			
Business Rules (compliance required)			
<ul style="list-style-type: none"> Uppercase value in field may not contain characters %UNKNOWN% or %AS ABOVE% or %SOOS BO% or %DELETE% or N/A or NA or U or NONE or GEEN or 0 or TEST or %ONTBREEK% or NIL or - or - The field may not contain a value that contains only numbers Field may not have 4 consecutive numbers embedded in it 			
Business Rules (informational)			
<ul style="list-style-type: none"> Uppercase value in field should not contain characters %ZZZ% or %XXX% or %ADDRES% 			

Field Name	Employer_Physical_Address_Code	Field Number	15
Start Position	498	Field Length	4
Content Rules			
<ul style="list-style-type: none"> This field may not be left blank Field may not start with a space. If the value provided contains leading spaces then all leading spaces will be trimmed from the value during further validation of the data value provided Uppercase value in field may only contain characters 1234567890 			
Business Rules (compliance required)			
<ul style="list-style-type: none"> Length of field must be exactly 4 characters 			
Business Rules (informational)			
<ul style="list-style-type: none"> Not applicable 			

Field Name	Employer_Phone_Number	Field Number	16
Start Position	502	Field Length	20
Content Rules			
<ul style="list-style-type: none"> This field may be left blank Field may not start with a space. If the value provided contains leading spaces then all leading spaces will be trimmed from the value during further validation of the data value provided Uppercase value in field may only contain characters 1234567890 ()/- 			
Business Rules (compliance required)			
<ul style="list-style-type: none"> Uppercase value in field may not contain characters %UNKNOWN% or %AS ABOVE% or %SOOS BO% or %DELETE% or N/A or NA or U or NONE or GEEN or 0 or TEST or %ONTBREEK% or NIL or - or - 			
Business Rules (informational)			
<ul style="list-style-type: none"> Not applicable 			

Field Name	Employer_Fax_Number	Field Number	17
Start Position	522	Field Length	20

Field Name	Employer_Fax_Number	Field Number	17
Content Rules			
<ul style="list-style-type: none"> This field may be left blank Field may not start with a space. If the value provided contains leading spaces then all leading spaces will be trimmed from the value during further validation of the data value provided Uppercase value in field may only contain characters 1234567890 ()/- 			
Business Rules (compliance required)			
<ul style="list-style-type: none"> Uppercase value in field may not contain characters %UNKNOWN% or %AS ABOVE% or %SOOS BO% or %DELETE% or N/A or NA or U or NONE or GEEN or 0 or TEST or %ONTBREEK% or NIL or - or - 			
Business Rules (informational)			
<ul style="list-style-type: none"> Not applicable 			

Field Name	Employer_Contact_Name	Field Number	18
Start Position	542	Field Length	50
Content Rules			
<ul style="list-style-type: none"> This field may not be left blank Field may not start with a space. If the value provided contains leading spaces then all leading spaces will be trimmed from the value during further validation of the data value provided Uppercase value in field may only contain characters ABCDEFGHIJKLMNOPQRSTUVWXYZ' - 			
Business Rules (compliance required)			
<ul style="list-style-type: none"> Uppercase value in field may not contain characters %UNKNOWN% or %AS ABOVE% or %SOOS BO% or %DELETE% or N/A or 0 or TEST or %ONTBREEK% or NIL or - or - 			
Business Rules (informational)			
<ul style="list-style-type: none"> Uppercase value in field should not contain characters NA or U or NONE or GEEN 			

Field Name	Employer_Contact_Email_Address	Field Number	19
Start Position	592	Field Length	50
Content Rules			
<ul style="list-style-type: none"> This field may be left blank Field may not start with a space. If the value provided contains leading spaces then all leading spaces will be trimmed from the value during further validation of the data value provided Uppercase value in field may only contain characters ABCDEFGHIJKLMNOPQRSTUVWXYZ1234567890_.<>-@ 			
Business Rules (compliance required)			
<ul style="list-style-type: none"> Uppercase value in field may not contain characters %UNKNOWN% or %AS ABOVE% or %SOOS BO% or %DELETE% or N/A or NA or U or NONE or GEEN or 0 or TEST or %ONTBREEK% or NIL or - or - Field must contain the @ character 			
Business Rules (informational)			
<ul style="list-style-type: none"> Not applicable 			

Field Name	Employer_Contact_Phone_Number	Field Number	20
Start Position	642	Field Length	20
Content Rules			
<ul style="list-style-type: none"> This field may not be left blank Field may not start with a space. If the value provided contains leading spaces then all leading spaces will be trimmed from the value during further validation of the data value provided Uppercase value in field may only contain characters 1234567890 ()/- 			
Business Rules (compliance required)			
<ul style="list-style-type: none"> Uppercase value in field may not contain characters %UNKNOWN% or %AS ABOVE% or %SOOS BO% or %DELETE% or N/A or NA or U or NONE or GEEN or 0 or TEST or %ONTBREEK% or NIL or - or - 			
Business Rules (informational)			

Field Name	Employer_Contact_Phone_Number	Field Number	20
<ul style="list-style-type: none"> Not applicable 			

Field Name	Employer_Contact_Cell_Number	Field Number	21
Start Position	662	Field Length	20
Content Rules			
<ul style="list-style-type: none"> This field may be left blank Field may not start with a space. If the value provided contains leading spaces then all leading spaces will be trimmed from the value during further validation of the data value provided Uppercase value in field may only contain characters 1234567890 (-) 			
Business Rules (compliance required)			
<ul style="list-style-type: none"> Uppercase value in field may not contain characters %UNKNOWN% or %AS ABOVE% or %SOOS BO% or %DELETE% or N/A or NA or U or NONE or GEEN or 0 or TEST or %ONTBREEK% or NIL or - or - 			
Business Rules (informational)			
<ul style="list-style-type: none"> Not applicable 			

Field Name	Employer_Approval_Status_Id	Field Number	22
Start Position	682	Field Length	10
Content Rules			
<ul style="list-style-type: none"> This field may not be left blank Field may not start with a space. If the value provided contains leading spaces then all leading spaces will be trimmed from the value during further validation of the data value provided Field may only contain whole numbers 			
Business Rules (compliance required)			
<ul style="list-style-type: none"> Field must contain a valid Employer_Approval_Status_Id If Employer_Approval_Status_Id has a value of 2 then Employer_Approval_Status_End_Date may not be blank If Employer_Approval_Status_Id does not have a value of 2 then Employer_Approval_Status_End_Date must be blank 			
Business Rules (informational)			
<ul style="list-style-type: none"> Not applicable 			

Field Name	Employer_Approval_Status_Start_Date	Field Number	23
Start Position	692	Field Length	8
Content Rules			
<ul style="list-style-type: none"> This field may not be left blank Field may not start with a space. If the value provided contains leading spaces then all leading spaces will be trimmed from the value during further validation of the data value provided Field may only contain a valid date in the format YYYYMMDD 			
Business Rules (compliance required)			
<ul style="list-style-type: none"> Employer_Approval_Status_Start_Date may not be greater than Employer_Approval_Status_End_Date Field may not have a value greater than today's date 			
Business Rules (informational)			
<ul style="list-style-type: none"> The system will display the maximum number of records with the same value for this field 			

Field Name	Employer_Approval_Status_End_Date	Field Number	24
Start Position	700	Field Length	8
Content Rules			
<ul style="list-style-type: none"> This field may be left blank Field may not start with a space. If the value provided contains leading spaces then all leading spaces will be trimmed from the value during further validation of the data value provided Field may only contain a valid date in the format YYYYMMDD 			

Field Name	Employer_Approval_Status_End_Date	Field Number	24
Business Rules (compliance required)			
<ul style="list-style-type: none"> Not applicable 			
Business Rules (informational)			
<ul style="list-style-type: none"> The system will display the maximum number of records with the same value for this field 			

Field Name	Employer_Approval_Status_Num	Field Number	25
Start Position	708	Field Length	20
Content Rules			
<ul style="list-style-type: none"> This field may be left blank Field may not start with a space. If the value provided contains leading spaces then all leading spaces will be trimmed from the value during further validation of the data value provided Uppercase value in field may only contain characters ABCDEFGHIJKLMNOPQRSTUVWXYZ1234567890@#&+() \/:_-'- 			
Business Rules (compliance required)			
<ul style="list-style-type: none"> Not applicable 			
Business Rules (informational)			
<ul style="list-style-type: none"> Not applicable 			

Field Name	Province_Code	Field Number	26
Start Position	728	Field Length	2
Content Rules			
<ul style="list-style-type: none"> This field may not be left blank Field may not start with a space. If the value provided contains leading spaces then all leading spaces will be trimmed from the value during further validation of the data value provided Uppercase value in field may only contain characters ABCDEFGHIJKLMNOPQRSTUVWXYZ1234567890@#&+() \/:_-'- 			
Business Rules (compliance required)			
<ul style="list-style-type: none"> Field must contain a valid Province_Code Field must have a value of X if Country_Code does not have a value of ZA and field may not have a value of X if Country_Code has a value of ZA 			
Business Rules (informational)			
<ul style="list-style-type: none"> Not applicable 			

Field Name	Country_Code	Field Number	27
Start Position	730	Field Length	4
Content Rules			
<ul style="list-style-type: none"> This field may not be left blank Field may not start with a space. If the value provided contains leading spaces then all leading spaces will be trimmed from the value during further validation of the data value provided Uppercase value in field may only contain characters ABCDEFGHIJKLMNOPQRSTUVWXYZ1234567890@#&+() \/:_-'- 			
Business Rules (compliance required)			
<ul style="list-style-type: none"> Field must contain a valid Country_Code 			
Business Rules (informational)			
<ul style="list-style-type: none"> Not applicable 			

Field Name	Latitude_Degree	Field Number	28
Start Position	734	Field Length	3
Content Rules			
<ul style="list-style-type: none"> This field may be left blank Field may not start with a space. If the value provided contains leading spaces then all leading spaces will be trimmed from the value during further validation of the data value provided Uppercase value in field may only contain characters 1234567890- 			

Field Name	Latitude_Degree	Field Number	28
Business Rules (compliance required)			
<ul style="list-style-type: none"> If a value is provided for Latitude_Degree or Latitude_Minutes or Latitude_Seconds then a value must be for Latitude_Degree and Latitude_Minutes and Latitude_Seconds If a value is provided for Latitude_Degree and related fields then a value must be provided for Longitude_Degree and related fields Field must be a negative value, may not be greater than -22 and may not have a value less than -35 Value must be provided if Date_Stamp has a value great than 20170701 			
Business Rules (informational)			
<ul style="list-style-type: none"> Not applicable 			

Field Name	Latitude_Minutes	Field Number	29
Start Position	737	Field Length	2
Content Rules			
<ul style="list-style-type: none"> This field may be left blank Field may not start with a space. If the value provided contains leading spaces then all leading spaces will be trimmed from the value during further validation of the data value provided Field may only contain whole numbers 			
Business Rules (compliance required)			
<ul style="list-style-type: none"> Value must have a length of exactly 2 (leading zeros) and may not be greater than 59 			
Business Rules (informational)			
<ul style="list-style-type: none"> Not applicable 			

Field Name	Latitude_Seconds	Field Number	30
Start Position	739	Field Length	6
Content Rules			
<ul style="list-style-type: none"> This field may be left blank Field may not start with a space. If the value provided contains leading spaces then all leading spaces will be trimmed from the value during further validation of the data value provided Uppercase value in field may only contain characters 1234567890. 			
Business Rules (compliance required)			
<ul style="list-style-type: none"> Value must have a length of exactly 6 (nn.nnn) and may not be greater than 59.999 			
Business Rules (informational)			
<ul style="list-style-type: none"> Not applicable 			

Field Name	Longitude_Degree	Field Number	31
Start Position	745	Field Length	2
Content Rules			
<ul style="list-style-type: none"> This field may be left blank Field may not start with a space. If the value provided contains leading spaces then all leading spaces will be trimmed from the value during further validation of the data value provided Field may only contain whole numbers 			
Business Rules (compliance required)			
<ul style="list-style-type: none"> If a value is provided for Longitude_Degree and related fields then a value must be provided for Latitude_Degree and related fields If a value if provided for Longitude_Degree or Longitude_Minutes or Longitude_Seconds then a value must be for Longitude_Degree, Longitude_Minutes and Longitude_Seconds Value may not be greater than 33 and may not have a value less than 16 Value must be provided if Date_Stamp has a value great than 20170701 			
Business Rules (informational)			
<ul style="list-style-type: none"> Not applicable 			

Field Name	Longitude_Minutes	Field Number	32
Start Position	747	Field Length	2

Field Name	Longitude_Minutes	Field Number	32
Content Rules			
<ul style="list-style-type: none"> This field may be left blank Field may not start with a space. If the value provided contains leading spaces then all leading spaces will be trimmed from the value during further validation of the data value provided Field may only contain whole numbers 			
Business Rules (compliance required)			
<ul style="list-style-type: none"> Value must have a length of exactly 2 (leading zeros) and may not be greater than 59 			
Business Rules (informational)			
<ul style="list-style-type: none"> Not applicable 			

Field Name	Longitude_Seconds	Field Number	33
Start Position	749	Field Length	6
Content Rules			
<ul style="list-style-type: none"> This field may be left blank Field may not start with a space. If the value provided contains leading spaces then all leading spaces will be trimmed from the value during further validation of the data value provided Uppercase value in field may only contain characters 1234567890. 			
Business Rules (compliance required)			
<ul style="list-style-type: none"> Value must have a length of exactly 6 (nn.nnn) and may not be greater than 59.999 			
Business Rules (informational)			
<ul style="list-style-type: none"> Not applicable 			

Field Name	Main_SDL_No	Field Number	34
Start Position	755	Field Length	10
Content Rules			
<ul style="list-style-type: none"> This field may not be left blank Field may not start with a space. If the value provided contains leading spaces then all leading spaces will be trimmed from the value during further validation of the data value provided Value in field may only contain characters L0123456789 OR N0123456789 			
Business Rules (compliance required)			
<ul style="list-style-type: none"> Main_SDL_No must exist in parent file 200 - Employer as SDL_No 			
Business Rules (informational)			
<ul style="list-style-type: none"> Not applicable 			

Field Name	Filler01	Field Number	35
Start Position	765	Field Length	20
Content Rules			
<ul style="list-style-type: none"> Not applicable 			
Business Rules (compliance required)			
<ul style="list-style-type: none"> This is a filler field and must be left blank 			
Business Rules (informational)			
<ul style="list-style-type: none"> Not applicable 			

Field Name	Filler02	Field Number	36
Start Position	785	Field Length	4
Content Rules			
<ul style="list-style-type: none"> Not applicable 			
Business Rules (compliance required)			
<ul style="list-style-type: none"> This is a filler field and must be left blank 			
Business Rules (informational)			
<ul style="list-style-type: none"> Not applicable 			

Field Name	Date_Stamp	Field Number	37
Start Position	789	Field Length	8
Content Rules			
<ul style="list-style-type: none"> • This field may not be left blank • Field may not start with a space. If the value provided contains leading spaces then all leading spaces will be trimmed from the value during further validation of the data value provided • Field may only contain a valid date in the format YYYYMMDD 			
Business Rules (compliance required)			
<ul style="list-style-type: none"> • Field may not have a value greater than today's date • Year component of field value may not be less than 1900 			
Business Rules (informational)			
<ul style="list-style-type: none"> • The system will display the maximum number of records with the same value for this field 			

5.3 Non NQF Intervention

File code 304

File naming standard

[Code]_0006_304_v001_YYYYMMDD.dat where:

- [Code] is the submitting ETQE's mnemonic identifier as recorded on the National Learners' Records Database in the format cccc. For example AGRI indicates the Agriculture Sector Education and Training Authority.
- 0006 indicates that the recipient information system to which this data will be submitted is SETMIS.
- v001 indicates that the submission has been extracted in accordance with version 1 of this specification
- YYYYMMDD represents the date on which the data submission was created.
- .dat is the file extension

Description

This file describes interventions that are offered that are not registered on the NQF.

This file is a modified version of the National Learners' Records Database (NLRD) File Number 23

General information:

A count of the number of records found in the file will be recorded in the aggregated report under the General information heading.

The **Date_Stamp** field must reflect the date on which a particular record was last updated. The field will be used by the recipient system to ensure that an older version of a record does not overwrite a more recent version of a record.

Submission requirements: Submission of this file is optional.

File record length: The length of each record must be exactly 329.

File fields

Field Name	Non_NQF_Interv_Code	Field Number	1
Start Position	1	Field Length	20
Content Rules			
<ul style="list-style-type: none"> • This field may not be left blank • Field may not start with a space. If the value provided contains leading spaces then all leading spaces will be trimmed from the value during further validation of the data value provided • Uppercase value in field may only contain characters ABCDEFGHIJKLMNOPQRSTUVWXYZ1234567890@#&+() \/:._- 			
Business Rules (compliance required)			
<ul style="list-style-type: none"> • Uppercase value in field may not contain characters %UNKNOWN% or %AS ABOVE% or %SOOS BO% or %DELETE% or N/A or NA or U or NONE or GEEN or 0 or TEST or %ONTBREEK% or NIL or - or - • The combination of Non_NQF_Interv_Code and Non_NQF_Interv_ETQE_Id must be unique 			
Business Rules (informational)			
<ul style="list-style-type: none"> • Not applicable 			

Field Name	Non_NQF_Interv_Name	Field Number	2
Start Position	21	Field Length	200
Content Rules			
<ul style="list-style-type: none"> • This field may not be left blank 			

Field Name	Non_NQF_Interv_Name	Field Number	2
<ul style="list-style-type: none"> Field may not start with a space. If the value provided contains leading spaces then all leading spaces will be trimmed from the value during further validation of the data value provided Uppercase value in field may only contain characters ABCDEFGHIJKLMNOPQRSTUVWXYZ1234567890@#&+() \/:_-'- 			
Business Rules (compliance required)			
<ul style="list-style-type: none"> Uppercase value in field may not contain characters %UNKNOWN% or %AS ABOVE% or %SOOS BO% or %DELETE% or N/A or NA or U or NONE or GEEN or O or TEST or %ONTBREEK% or NIL or - or - 			
Business Rules (informational)			
<ul style="list-style-type: none"> Not applicable 			

Field Name	Filler01	Field Number	3
Start Position	221	Field Length	8
Content Rules			
<ul style="list-style-type: none"> Not applicable 			
Business Rules (compliance required)			
<ul style="list-style-type: none"> This is a filler field and must be left blank 			
Business Rules (informational)			
<ul style="list-style-type: none"> Not applicable 			

Field Name	Subfield_Id	Field Number	4
Start Position	229	Field Length	8
Content Rules			
<ul style="list-style-type: none"> This field may not be left blank Field may not start with a space. If the value provided contains leading spaces then all leading spaces will be trimmed from the value during further validation of the data value provided Field may only contain whole numbers 			
Business Rules (compliance required)			
<ul style="list-style-type: none"> Field must contain a valid Subfield_Id 			
Business Rules (informational)			
<ul style="list-style-type: none"> Not applicable 			

Field Name	Filler02	Field Number	5
Start Position	237	Field Length	8
Content Rules			
<ul style="list-style-type: none"> Not applicable 			
Business Rules (compliance required)			
<ul style="list-style-type: none"> This is a filler field and must be left blank 			
Business Rules (informational)			
<ul style="list-style-type: none"> Not applicable 			

Field Name	Non_NQF_Interv_Reg_Start_Date	Field Number	6
Start Position	245	Field Length	8
Content Rules			
<ul style="list-style-type: none"> This field may not be left blank Field may not start with a space. If the value provided contains leading spaces then all leading spaces will be trimmed from the value during further validation of the data value provided Field may only contain a valid date in the format YYYYMMDD 			
Business Rules (compliance required)			
<ul style="list-style-type: none"> Non_NQF_Interv_Reg_Start_Date may not be greater than Non_NQF_Interv_Reg_End_Date Field may not have a value greater than today's date Year component of field value may not be less than 1900 			

Field Name	Non_NQF_Interv_Reg_Start_Date	Field Number	6
Business Rules (informational)			
<ul style="list-style-type: none"> The system will display the maximum number of records with the same value for this field 			

Field Name	Non_NQF_Interv_Reg_End_Date	Field Number	7
Start Position	253	Field Length	8
Content Rules			
<ul style="list-style-type: none"> This field may be left blank Field may not start with a space. If the value provided contains leading spaces then all leading spaces will be trimmed from the value during further validation of the data value provided Field may only contain a valid date in the format YYYYMMDD 			
Business Rules (compliance required)			
<ul style="list-style-type: none"> Field may not have a value greater than today's date 			
Business Rules (informational)			
<ul style="list-style-type: none"> The system will display the maximum number of records with the same value for this field 			

Field Name	Filler03	Field Number	8
Start Position	261	Field Length	20
Content Rules			
<ul style="list-style-type: none"> Not applicable 			
Business Rules (compliance required)			
<ul style="list-style-type: none"> This is a filler field and must be left blank 			
Business Rules (informational)			
<ul style="list-style-type: none"> Not applicable 			

Field Name	Non_NQF_Interv_ETQE_Id	Field Number	9
Start Position	281	Field Length	10
Content Rules			
<ul style="list-style-type: none"> This field may not be left blank Field may not start with a space. If the value provided contains leading spaces then all leading spaces will be trimmed from the value during further validation of the data value provided Field may only contain whole numbers 			
Business Rules (compliance required)			
<ul style="list-style-type: none"> Field must contain a valid Non_NQF_Interv_ETQE_Id 			
Business Rules (informational)			
<ul style="list-style-type: none"> Not applicable 			

Field Name	Non_NQF_Interv_Status_Id	Field Number	10
Start Position	291	Field Length	10
Content Rules			
<ul style="list-style-type: none"> This field may not be left blank Field may not start with a space. If the value provided contains leading spaces then all leading spaces will be trimmed from the value during further validation of the data value provided Field may only contain whole numbers 			
Business Rules (compliance required)			
<ul style="list-style-type: none"> Field must contain a valid Non_NQF_Interv_Status_Id If Non_NQF_Interv_Status_Id has a value of 2 then Non_NQF_Interv_Reg_End_Date may not be blank If Non_NQF_Interv_Status_Id does not have a value of 2 then Non_NQF_Interv_Reg_End_Date must be blank 			
Business Rules (informational)			
<ul style="list-style-type: none"> Not applicable 			

Field Name	Non_NQF_Interv_Credit	Field Number	11
Start Position	301	Field Length	10
Content Rules			
<ul style="list-style-type: none"> • This field may not be left blank • Field may not start with a space. If the value provided contains leading spaces then all leading spaces will be trimmed from the value during further validation of the data value provided • Field may only contain whole numbers 			
Business Rules (compliance required)			
<ul style="list-style-type: none"> • Value may not be less than 1 • Value may not be greater than 480 			
Business Rules (informational)			
<ul style="list-style-type: none"> • Not applicable 			

Field Name	Learning_Programme_Type_Id	Field Number	12
Start Position	311	Field Length	10
Content Rules			
<ul style="list-style-type: none"> • This field may not be left blank • Field may not start with a space. If the value provided contains leading spaces then all leading spaces will be trimmed from the value during further validation of the data value provided • Field may only contain whole numbers 			
Business Rules (compliance required)			
<ul style="list-style-type: none"> • Field must contain a valid Learning_Programme_Type_Id. 			
Business Rules (informational)			
<ul style="list-style-type: none"> • Not applicable 			

Field Name	Date_Stamp	Field Number	13
Start Position	321	Field Length	8
Content Rules			
<ul style="list-style-type: none"> • This field may not be left blank • Field may not start with a space. If the value provided contains leading spaces then all leading spaces will be trimmed from the value during further validation of the data value provided • Field may only contain a valid date in the format YYYYMMDD 			
Business Rules (compliance required)			
<ul style="list-style-type: none"> • Field may not have a value greater than today's date • Year component of field value may not be less than 1900 			
Business Rules (informational)			
<ul style="list-style-type: none"> • The system will display the maximum number of records with the same value for this field 			

5.4 Person

File code 400

File naming standard

[Code]_0006_400_v001_YYYYMMDD.dat where:

- [Code] is the submitting ETQE’s mnemonic identifier as recorded on the National Learners’ Records Database in the format cccc. For example AGRI indicates the Agriculture Sector Education and Training Authority.
- 0006 indicates that the recipient information system to which this data will be submitted is SETMIS.
- v001 indicates that the submission has been extracted in accordance with version 1 of this specification
- YYYYMMDD represents the date on which the data submission was created.
- .dat is the file extension

Description

This file describes people that have either enrolled on or achieved learnerships, qualifications or unit standards. This file is a modified version of the National Learners' Records Database (NLRD) File Number 25

General information:

A count of the number of records found in the file will be recorded in the aggregated report under the General information heading.

The **Date_Stamp** field must reflect the date on which a particular record was last updated. The field will be used by the recipient system to ensure that an older version of a record does not overwrite a more recent version of a record.

Submission requirements: Submission of this file is mandatory.

File record length: The length of each record must be exactly 846.

File fields

Field Name	National_Id	Field Number	1
Start Position	1	Field Length	15
Content Rules			
<ul style="list-style-type: none"> • This field may be left blank • Field may not start with a space. If the value provided contains leading spaces then all leading spaces will be trimmed from the value during further validation of the data value provided • Uppercase value in field may only contain characters 1234567890 			
Business Rules (compliance required)			
<ul style="list-style-type: none"> • Both National_Id and Person_Alternate_Id may not be blank • Value must have a length of exactly 13 • Field value may not have characters 0000 from characters 7 to 10 • Field may not have characters 0000 from characters 1 to 4 • Uppercase value in field may not contain characters 111111111111 or 222222222222 or 333333333333 or 444444444444 or 555555555555 or 666666666666 or 777777777777 or 888888888888 or 999999999999 • Field must be blank if POPI_Act_Status_ID has a value of 2 			
Business Rules (informational)			
<ul style="list-style-type: none"> • Not applicable 			

Field Name	Person_Alternate_Id	Field Number	2
Start Position	16	Field Length	20
Content Rules			
<ul style="list-style-type: none"> • This field may be left blank • Field may not start with a space. If the value provided contains leading spaces then all leading spaces will be trimmed from the value during further validation of the data value provided • Uppercase value in field may only contain characters ABCDEFGHIJKLMNOPQRSTUVWXYZ-1234567890@_ 			
Business Rules (compliance required)			
<ul style="list-style-type: none"> • Uppercase value in field may not contain characters %UNKNOWN% or %AS ABOVE% or %SOOS BO% or %DELETE% or N/A or NA or U or NONE or GEEN or O or TEST or %ONTBREEK% or NIL or - or - • If Person_Alternate_Id has a value then Alternate_Id_Type_Id may not = 533 • If Person_Alternate_Id IS blank then Alternate_Id_Type_Id must = 533 			
Business Rules (informational)			
<ul style="list-style-type: none"> • Not applicable 			

Field Name	Alternate_Id_Type_Id	Field Number	3
Start Position	36	Field Length	3
Content Rules			
<ul style="list-style-type: none"> • This field may not be left blank • Field may not start with a space. If the value provided contains leading spaces then all leading spaces will be trimmed from the value during further validation of the data value provided • Field may only contain whole numbers 			
Business Rules (compliance required)			
<ul style="list-style-type: none"> • Field must contain a valid Alternate_Id_Type_Id • If Alternate_Id_Type_Id = 537 then combination of Alternate_Id_Type_Id, National_Id, Provider_Code and Provider_ETQE_Id must be unique (note only first 10 characters of National ID are used) • If Alternate_Id_Type_Id <> 537 then combination of Alternate_Id_Type_Id and National_Id must be unique (note only first 10 characters of National ID are used) • If Alternate_Id_Type_Id = 537 then combination Alternate_Id_Type_Id, Person_Alternate_Id, Provider_Code and Provider_ETQE_Id must be unique • If Alternate_Id_Type_Id <> 537 and Alternate_Id_Type_Id <> 533 then combination Alternate_Id_Type_Id and Person_Alternate_Id must be unique • If Alternate_Id_Type_Id = 537 then combination of Alternate_Id_Type_Id, Person_Alternate_Id, National_Id, Provider_Code and Provider_ETQE_Id must be associated with at least one record in one of the following files 500, 501, 503, 505 • If Alternate_Id_Type_Id <> 537 then the combination of Alternate_Id_Type_Id, Person_Alternate_Id and National_Id must be associated with at least one record in any one of the following related child files 401, 500, 501, 503, 505 			
Business Rules (informational)			
<ul style="list-style-type: none"> • Not applicable 			

Field Name	Equity_Code	Field Number	4
Start Position	39	Field Length	10
Content Rules			
<ul style="list-style-type: none"> • This field may not be left blank • Field may not start with a space. If the value provided contains leading spaces then all leading spaces will be trimmed from the value during further validation of the data value provided • Uppercase value in field may only contain characters ABCDEFGHIJKLMNOPQRSTUVWXYZ1234567890@#&+() \/:;_-'- 			
Business Rules (compliance required)			
<ul style="list-style-type: none"> • Field must contain a valid Equity_Code 			

Field Name	Equity_Code	Field Number	4
Business Rules (informational)			
<ul style="list-style-type: none"> Not applicable 			

Field Name	Nationality_Code	Field Number	5
Start Position	49	Field Length	3
Content Rules			
<ul style="list-style-type: none"> This field may not be left blank Field may not start with a space. If the value provided contains leading spaces then all leading spaces will be trimmed from the value during further validation of the data value provided Uppercase value in field may only contain characters ABCDEFGHIJKLMNOPQRSTUVWXYZ1234567890@#&+() \/:_,'- 			
Business Rules (compliance required)			
<ul style="list-style-type: none"> Field must contain a valid Nationality_Code 			
Business Rules (informational)			
<ul style="list-style-type: none"> Not applicable 			

Field Name	Home_Language_Code	Field Number	6
Start Position	52	Field Length	10
Content Rules			
<ul style="list-style-type: none"> This field may not be left blank Field may not start with a space. If the value provided contains leading spaces then all leading spaces will be trimmed from the value during further validation of the data value provided Uppercase value in field may only contain characters ABCDEFGHIJKLMNOPQRSTUVWXYZ1234567890@#&+() \/:_,'- 			
Business Rules (compliance required)			
<ul style="list-style-type: none"> Field must contain a valid Home_Language_Code 			
Business Rules (informational)			
<ul style="list-style-type: none"> Not applicable 			

Field Name	Gender_Code	Field Number	7
Start Position	62	Field Length	1
Content Rules			
<ul style="list-style-type: none"> This field may not be left blank Field may not start with a space. If the value provided contains leading spaces then all leading spaces will be trimmed from the value during further validation of the data value provided Uppercase value in field may only contain characters ABCDEFGHIJKLMNOPQRSTUVWXYZ1234567890@#&+() \/:_,'- 			
Business Rules (compliance required)			
<ul style="list-style-type: none"> Field must contain a valid Gender_Code If National_Id is not blank then Gender_Code must match gender character of National_Id. The 7th character of a SA National ID indicates a gender of female when less than 5 and male when greater than 4. 			
Business Rules (informational)			
<ul style="list-style-type: none"> Not applicable 			

Field Name	Citizen_Resident_Status_Code	Field Number	8
Start Position	63	Field Length	10
Content Rules			
<ul style="list-style-type: none"> This field may not be left blank Field may not start with a space. If the value provided contains leading spaces then all leading spaces will be trimmed from the value during further validation of the data value provided Uppercase value in field may only contain characters ABCDEFGHIJKLMNOPQRSTUVWXYZ1234567890@#&+() \/:_,'- 			

Field Name	Citizen_Resident_Status_Code	Field Number	8
Business Rules (compliance required)			
<ul style="list-style-type: none"> Field must contain a valid Citizen_Resident_Status_Code 			
Business Rules (informational)			
<ul style="list-style-type: none"> Not applicable 			

Field Name	Filler01	Field Number	9
Start Position	73	Field Length	2
Content Rules			
<ul style="list-style-type: none"> Not applicable 			
Business Rules (compliance required)			
<ul style="list-style-type: none"> This is a filler field and must be left blank 			
Business Rules (informational)			
<ul style="list-style-type: none"> Not applicable 			

Field Name	Filler02	Field Number	10
Start Position	75	Field Length	10
Content Rules			
<ul style="list-style-type: none"> Not applicable 			
Business Rules (compliance required)			
<ul style="list-style-type: none"> This is a filler field and must be left blank 			
Business Rules (informational)			
<ul style="list-style-type: none"> Not applicable 			

Field Name	Person_Last_Name	Field Number	11
Start Position	85	Field Length	45
Content Rules			
<ul style="list-style-type: none"> This field may be left blank Field may not start with a space. If the value provided contains leading spaces then all leading spaces will be trimmed from the value during further validation of the data value provided Uppercase value in field may only contain characters ABCDEFGHIJKLMNOPQRSTUVWXYZ" - 			
Business Rules (compliance required)			
<ul style="list-style-type: none"> Uppercase value in field may not contain characters %UNKNOWN% or %AS ABOVE% or %SOOS BO% or %DELETE% or N/A or 0 or TEST or %ONTBREEK% or NIL or - or – Field must be blank if POPI_Act_Status_ID has a value of 2 Value must be provided if POPI_Act_Status_ID does not have a value of 2 			
Business Rules (informational)			
<ul style="list-style-type: none"> Uppercase value in field should not contain characters NA or U or NONE or GEEN Person_Last_Name should not have the same value as Person_First_Name 			

Field Name	Person_First_Name	Field Number	12
Start Position	130	Field Length	26
Content Rules			
<ul style="list-style-type: none"> This field may be left blank Field may not start with a space. If the value provided contains leading spaces then all leading spaces will be trimmed from the value during further validation of the data value provided Uppercase value in field may only contain characters ABCDEFGHIJKLMNOPQRSTUVWXYZ"- 			
Business Rules (compliance required)			
<ul style="list-style-type: none"> Uppercase value in field may not contain characters %UNKNOWN% or %AS ABOVE% or %SOOS BO% or %DELETE% or N/A or 0 or TEST or %ONTBREEK% or NIL or - or – Field must be blank if POPI_Act_Status_ID has a value of 2 Value must be provided if POPI_Act_Status_ID does not have a value of 2 			
Business Rules (informational)			

Field Name	Person_First_Name	Field Number	12
<ul style="list-style-type: none"> Uppercase value in field should not contain characters NA or U or NONE or GEEN Person_First_Name should not have the same value as Person_Middle_Name 			

Field Name	Person_Middle_Name	Field Number	13
Start Position	156	Field Length	50
Content Rules			
<ul style="list-style-type: none"> This field may be left blank Field may not start with a space. If the value provided contains leading spaces then all leading spaces will be trimmed from the value during further validation of the data value provided Uppercase value in field may only contain characters ABCDEFGHIJKLMNOPQRSTUVWXYZ' - 			
Business Rules (compliance required)			
<ul style="list-style-type: none"> Uppercase value in field may not contain characters %UNKNOWN% or %AS ABOVE% or %SOOS BO% or %DELETE% or N/A or 0 or TEST or %ONTBREEK% or NIL or - or - Field must be blank if POPI_Act_Status_ID has a value of 2 			
Business Rules (informational)			
<ul style="list-style-type: none"> Uppercase value in field should not contain characters NA or U or NONE or GEEN Person_Middle_Name should not have the same value as Person_Last_Name 			

Field Name	Person_Title	Field Number	14
Start Position	206	Field Length	10
Content Rules			
<ul style="list-style-type: none"> This field may be left blank Field may not start with a space. If the value provided contains leading spaces then all leading spaces will be trimmed from the value during further validation of the data value provided Uppercase value in field may only contain characters ABCDEFGHIJKLMNOPQRSTUVWXYZ' - 			
Business Rules (compliance required)			
<ul style="list-style-type: none"> Uppercase value in field may not contain characters %UNKNOWN% or %AS ABOVE% or %SOOS BO% or %DELETE% or N/A or NA or U or NONE or GEEN or 0 or TEST or %ONTBREEK% or NIL or - or - Uppercase value in field may not contain characters NA or U or NONE or GEEN 			
Business Rules (informational)			
<ul style="list-style-type: none"> Not applicable 			

Field Name	Person_Birth_Date	Field Number	15
Start Position	216	Field Length	8
Content Rules			
<ul style="list-style-type: none"> This field may not be left blank Field may not start with a space. If the value provided contains leading spaces then all leading spaces will be trimmed from the value during further validation of the data value provided Field may only contain a valid date in the format YYYYMMDD 			
Business Rules (compliance required)			
<ul style="list-style-type: none"> Year component must be greater than 1850 			
Business Rules (informational)			
<ul style="list-style-type: none"> The system will display the maximum number of records with the same value for this field If National_Id is provided then the first 6 characters of National_Id must be the same as characters 3 to 8 of Person_Birth_Date Age may not be less than 16 years 			

Field Name	Person_Home_Address_1	Field Number	16
Start Position	224	Field Length	50
Content Rules			
<ul style="list-style-type: none"> This field may be left blank 			

Field Name	Person_Home_Address_1	Field Number	16
<ul style="list-style-type: none"> Field may not start with a space. If the value provided contains leading spaces then all leading spaces will be trimmed from the value during further validation of the data value provided Uppercase value in field may only contain characters ABCDEFGHIJKLMNOPQRSTUVWXYZ - 1234567890#&()/\.:_`', 			
Business Rules (compliance required)			
<ul style="list-style-type: none"> Uppercase value in field may not contain characters %UNKNOWN% or %AS ABOVE% or %SOOS BO% or %DELETE% or N/A or NA or U or NONE or GEEN or 0 or TEST or %ONTBREEK% or NIL or - or - The field may not contain a value that contains only numbers Field must be blank if POPI_Act_Status_ID has a value of 2 			
Business Rules (informational)			
<ul style="list-style-type: none"> Uppercase value in field should not contain characters %ZZZ% or %XXX% or %ADDRES% 			

Field Name	Person_Home_Address_2	Field Number	17
Start Position	274	Field Length	50
Content Rules			
<ul style="list-style-type: none"> This field may be left blank Field may not start with a space. If the value provided contains leading spaces then all leading spaces will be trimmed from the value during further validation of the data value provided Uppercase value in field may only contain characters ABCDEFGHIJKLMNOPQRSTUVWXYZ - 1234567890#&()/\.:_`', 			
Business Rules (compliance required)			
<ul style="list-style-type: none"> Uppercase value in field may not contain characters %UNKNOWN% or %AS ABOVE% or %SOOS BO% or %DELETE% or N/A or NA or U or NONE or GEEN or 0 or TEST or %ONTBREEK% or NIL or - or - The field may not contain a value that contains only numbers Field must be blank if POPI_Act_Status_ID has a value of 2 			
Business Rules (informational)			
<ul style="list-style-type: none"> Uppercase value in field should not contain characters %ZZZ% or %XXX% or %ADDRES% 			

Field Name	Person_Home_Address_3	Field Number	18
Start Position	324	Field Length	50
Content Rules			
<ul style="list-style-type: none"> This field may be left blank Field may not start with a space. If the value provided contains leading spaces then all leading spaces will be trimmed from the value during further validation of the data value provided Uppercase value in field may only contain characters ABCDEFGHIJKLMNOPQRSTUVWXYZ - 1234567890#&()/\.:_`', 			
Business Rules (compliance required)			
<ul style="list-style-type: none"> Uppercase value in field may not contain characters %UNKNOWN% or %AS ABOVE% or %SOOS BO% or %DELETE% or N/A or NA or U or NONE or GEEN or 0 or TEST or %ONTBREEK% or NIL or - or - The field may not contain a value that contains only numbers Field may not have 4 consecutive numbers embedded in it Field must be blank if POPI_Act_Status_ID has a value of 2 			
Business Rules (informational)			
<ul style="list-style-type: none"> Uppercase value in field should not contain characters %ZZZ% or %XXX% or %ADDRES% 			

Field Name	Person_Postal_Address_1	Field Number	19
Start Position	374	Field Length	50
Content Rules			
<ul style="list-style-type: none"> This field may be left blank 			

Field Name	Person_Postal_Address_1	Field Number	19
<ul style="list-style-type: none"> Field may not start with a space. If the value provided contains leading spaces then all leading spaces will be trimmed from the value during further validation of the data value provided Uppercase value in field may only contain characters ABCDEFGHIJKLMNOPQRSTUVWXYZ - 1234567890#&()/\.:_`', 			
Business Rules (compliance required)			
<ul style="list-style-type: none"> Uppercase value in field may not contain characters %UNKNOWN% or %AS ABOVE% or %SOOS BO% or %DELETE% or N/A or NA or U or NONE or GEEN or 0 or TEST or %ONTBREEK% or NIL or - or - The field may not contain a value that contains only numbers Field must be blank if POPI_Act_Status_ID has a value of 2 			
Business Rules (informational)			
<ul style="list-style-type: none"> Uppercase value in field should not contain characters %ZZZ% or %XXX% or %ADDRES% 			

Field Name	Person_Postal_Address_2	Field Number	20
Start Position	424	Field Length	50
Content Rules			
<ul style="list-style-type: none"> This field may be left blank Field may not start with a space. If the value provided contains leading spaces then all leading spaces will be trimmed from the value during further validation of the data value provided Uppercase value in field may only contain characters ABCDEFGHIJKLMNOPQRSTUVWXYZ - 1234567890#&()/\.:_`', 			
Business Rules (compliance required)			
<ul style="list-style-type: none"> Uppercase value in field may not contain characters %UNKNOWN% or %AS ABOVE% or %SOOS BO% or %DELETE% or N/A or NA or U or NONE or GEEN or 0 or TEST or %ONTBREEK% or NIL or - or - The field may not contain a value that contains only numbers Field must be blank if POPI_Act_Status_ID has a value of 2 			
Business Rules (informational)			
<ul style="list-style-type: none"> Uppercase value in field should not contain characters %ZZZ% or %XXX% or %ADDRES% 			

Field Name	Person_Postal_Address_3	Field Number	21
Start Position	474	Field Length	50
Content Rules			
<ul style="list-style-type: none"> This field may be left blank Field may not start with a space. If the value provided contains leading spaces then all leading spaces will be trimmed from the value during further validation of the data value provided Uppercase value in field may only contain characters ABCDEFGHIJKLMNOPQRSTUVWXYZ - 1234567890#&()/\.:_`', 			
Business Rules (compliance required)			
<ul style="list-style-type: none"> Uppercase value in field may not contain characters %UNKNOWN% or %AS ABOVE% or %SOOS BO% or %DELETE% or N/A or NA or U or NONE or GEEN or 0 or TEST or %ONTBREEK% or NIL or - or - The field may not contain a value that contains only numbers Field may not have 4 consecutive numbers embedded in it Field must be blank if POPI_Act_Status_ID has a value of 2 			
Business Rules (informational)			
<ul style="list-style-type: none"> Uppercase value in field should not contain characters %ZZZ% or %XXX% or %ADDRES% 			

Field Name	Person_Home_Addr_Postal_Code	Field Number	22
Start Position	524	Field Length	4
Content Rules			
<ul style="list-style-type: none"> This field may be left blank 			

Field Name	Person_Home_Addr_Postal_Code	Field Number	22
<ul style="list-style-type: none"> Field may not start with a space. If the value provided contains leading spaces then all leading spaces will be trimmed from the value during further validation of the data value provided Uppercase value in field may only contain characters 1234567890 			
Business Rules (compliance required)			
<ul style="list-style-type: none"> Length of field must be exactly 4 characters 			
Business Rules (informational)			
<ul style="list-style-type: none"> Not applicable 			

Field Name	Person_Postal_Addr_Post_Code	Field Number	23
Start Position	528	Field Length	4
Content Rules			
<ul style="list-style-type: none"> This field may be left blank Field may not start with a space. If the value provided contains leading spaces then all leading spaces will be trimmed from the value during further validation of the data value provided Uppercase value in field may only contain characters 1234567890 			
Business Rules (compliance required)			
<ul style="list-style-type: none"> Length of field must be exactly 4 characters 			
Business Rules (informational)			
<ul style="list-style-type: none"> Not applicable 			

Field Name	Person_Phone_Number	Field Number	24
Start Position	532	Field Length	20
Content Rules			
<ul style="list-style-type: none"> This field may be left blank Field may not start with a space. If the value provided contains leading spaces then all leading spaces will be trimmed from the value during further validation of the data value provided Uppercase value in field may only contain characters 1234567890 ()/- 			
Business Rules (compliance required)			
<ul style="list-style-type: none"> Uppercase value in field may not contain characters %UNKNOWN% or %AS ABOVE% or %SOOS BO% or %DELETE% or N/A or NA or U or NONE or GEEN or 0 or TEST or %ONTBREEK% or NIL or - or - Field must be blank if POPI_Act_Status_ID has a value of 2 			
Business Rules (informational)			
<ul style="list-style-type: none"> Not applicable 			

Field Name	Person_Cell_Phone_Number	Field Number	25
Start Position	552	Field Length	20
Content Rules			
<ul style="list-style-type: none"> This field may be left blank Field may not start with a space. If the value provided contains leading spaces then all leading spaces will be trimmed from the value during further validation of the data value provided Uppercase value in field may only contain characters 1234567890 ()/- 			
Business Rules (compliance required)			
<ul style="list-style-type: none"> Uppercase value in field may not contain characters %UNKNOWN% or %AS ABOVE% or %SOOS BO% or %DELETE% or N/A or NA or U or NONE or GEEN or 0 or TEST or %ONTBREEK% or NIL or - or - Field must be blank if POPI_Act_Status_ID has a value of 2 			
Business Rules (informational)			
<ul style="list-style-type: none"> Not applicable 			

Field Name	Person_Fax_Number	Field Number	26
Start Position	572	Field Length	20
Content Rules			

Field Name	Person_Fax_Number	Field Number	26
<ul style="list-style-type: none"> This field may be left blank Field may not start with a space. If the value provided contains leading spaces then all leading spaces will be trimmed from the value during further validation of the data value provided Uppercase value in field may only contain characters 1234567890 ()/- 			
Business Rules (compliance required)			
<ul style="list-style-type: none"> Uppercase value in field may not contain characters %UNKNOWN% or %AS ABOVE% or %SOOS BO% or %DELETE% or N/A or NA or U or NONE or GEEN or 0 or TEST or %ONTBREEK% or NIL or - or - Field must be blank if POPI_Act_Status_ID has a value of 2 			
Business Rules (informational)			
<ul style="list-style-type: none"> Not applicable 			

Field Name	Person_Email_Address	Field Number	27
Start Position	592	Field Length	50
Content Rules			
<ul style="list-style-type: none"> This field may be left blank Field may not start with a space. If the value provided contains leading spaces then all leading spaces will be trimmed from the value during further validation of the data value provided Uppercase value in field may only contain characters ABCDEFGHIJKLMNOPQRSTUVWXYZ1234567890_<>-@ 			
Business Rules (compliance required)			
<ul style="list-style-type: none"> Uppercase value in field may not contain characters %UNKNOWN% or %AS ABOVE% or %SOOS BO% or %DELETE% or N/A or NA or U or NONE or GEEN or 0 or TEST or %ONTBREEK% or NIL or - or - Field must contain the @ character Field must be blank if POPI_Act_Status_ID has a value of 2 			
Business Rules (informational)			
<ul style="list-style-type: none"> Not applicable 			

Field Name	Province_Code	Field Number	28
Start Position	642	Field Length	2
Content Rules			
<ul style="list-style-type: none"> This field may not be left blank Field may not start with a space. If the value provided contains leading spaces then all leading spaces will be trimmed from the value during further validation of the data value provided Uppercase value in field may only contain characters ABCDEFGHIJKLMNOPQRSTUVWXYZ1234567890@#&+() \/:;_-'- 			
Business Rules (compliance required)			
<ul style="list-style-type: none"> Field must contain a valid Province_Code 			
Business Rules (informational)			
<ul style="list-style-type: none"> Not applicable 			

Field Name	Provider_Code	Field Number	29
Start Position	644	Field Length	20
Content Rules			
<ul style="list-style-type: none"> This field may be left blank Field may not start with a space. If the value provided contains leading spaces then all leading spaces will be trimmed from the value during further validation of the data value provided Uppercase value in field may only contain characters ABCDEFGHIJKLMNOPQRSTUVWXYZ1234567890@#&+() \/:;_-'- 			
Business Rules (compliance required)			

Field Name	Provider_Code	Field Number	29
<ul style="list-style-type: none"> Uppercase value in field may not contain characters %UNKNOWN% or %AS ABOVE% or %SOOS BO% or %DELETE% or N/A or NA or U or NONE or GEEN or 0 or TEST or %ONTBREEK% or NIL or - or - The combination Provider_Code and Provider_ETQE_Id must be valid. The combination of Provider_Code and Provider_ETQE_Id must exist on 101 - Provider 			
Business Rules (informational)			
<ul style="list-style-type: none"> Not applicable 			

Field Name	Provider_ETQE_Id	Field Number	30
Start Position	664	Field Length	10
Content Rules			
<ul style="list-style-type: none"> This field may be left blank Field may not start with a space. If the value provided contains leading spaces then all leading spaces will be trimmed from the value during further validation of the data value provided Field may only contain whole numbers 			
Business Rules (compliance required)			
<ul style="list-style-type: none"> Field must contain a valid Provider_ETQE_Id 			
Business Rules (informational)			
<ul style="list-style-type: none"> Not applicable 			

Field Name	Person_Previous_Lastname	Field Number	31
Start Position	674	Field Length	45
Content Rules			
<ul style="list-style-type: none"> This field may be left blank Field may not start with a space. If the value provided contains leading spaces then all leading spaces will be trimmed from the value during further validation of the data value provided Uppercase value in field may only contain characters ABCDEFGHIJKLMNOPQRSTUVWXYZ' - 			
Business Rules (compliance required)			
<ul style="list-style-type: none"> Uppercase value in field may not contain characters %UNKNOWN% or %AS ABOVE% or %SOOS BO% or %DELETE% or N/A or 0 or TEST or %ONTBREEK% or NIL or - or - Field must be blank if POPI_Act_Status_ID has a value of 2 			
Business Rules (informational)			
<ul style="list-style-type: none"> Uppercase value in field should not contain characters NA or U or NONE or GEEN 			

Field Name	Person_Previous_Alternate_Id	Field Number	32
Start Position	719	Field Length	20
Content Rules			
<ul style="list-style-type: none"> This field may be left blank Field may not start with a space. If the value provided contains leading spaces then all leading spaces will be trimmed from the value during further validation of the data value provided Uppercase value in field may only contain characters ABCDEFGHIJKLMNOPQRSTUVWXYZ-1234567890@_ 			
Business Rules (compliance required)			
<ul style="list-style-type: none"> Uppercase value in field may not contain characters %UNKNOWN% or %AS ABOVE% or %SOOS BO% or %DELETE% or N/A or NA or U or NONE or GEEN or 0 or TEST or %ONTBREEK% or NIL or - or - If a value is provided for Person_Previous_Alternate_Id or Person_Previous_Alternate_Id_Type_Id or Person_Previous_Provider_Code or Person_Previous_Provider_ETQE_Id then a value must be provided for all of these fields If Person_Previous_Alternate_Id has a value then Person_Previous_Alternate_Id_Type_Id may not = 533 If Person_Previous_Alternate_Id IS blank then Person_Previous_Alternate_Id_Type_Id must = 533 			
Business Rules (informational)			

Field Name	Person_Previous_Alternate_Id	Field Number	32
<ul style="list-style-type: none"> Not applicable 			

Field Name	Person_Previous_Alternate_Id_Type_Id	Field Number	33
Start Position	739	Field Length	3
Content Rules			
<ul style="list-style-type: none"> This field may be left blank Field may not start with a space. If the value provided contains leading spaces then all leading spaces will be trimmed from the value during further validation of the data value provided Field may only contain whole numbers 			
Business Rules (compliance required)			
<ul style="list-style-type: none"> Field must contain a valid Alternate_Id_Type_Id 			
Business Rules (informational)			
<ul style="list-style-type: none"> Not applicable 			

Field Name	Person_Previous_Provider_Code	Field Number	34
Start Position	742	Field Length	20
Content Rules			
<ul style="list-style-type: none"> This field may be left blank Field may not start with a space. If the value provided contains leading spaces then all leading spaces will be trimmed from the value during further validation of the data value provided Uppercase value in field may only contain characters ABCDEFGHIJKLMNOPQRSTUVWXYZ1234567890@#&+() \/:;_- 			
Business Rules (compliance required)			
<ul style="list-style-type: none"> Uppercase value in field may not contain characters %UNKNOWN% or %AS ABOVE% or %SOOS BO% or %DELETE% or N/A or NA or U or NONE or GEEN or 0 or TEST or %ONTBREEK% or NIL or - or - The combination Person_Previous_Provider_Code and Person_Previous_Provider_ETQE_Id must be valid. The combination of Person_Previous_Provider_Code and Person_Previous_Provider_ETQE_Id must exist on 101 - Provider 			
Business Rules (informational)			
<ul style="list-style-type: none"> Not applicable 			

Field Name	Person_Previous_Provider_ETQE_Id	Field Number	35
Start Position	762	Field Length	10
Content Rules			
<ul style="list-style-type: none"> This field may be left blank Field may not start with a space. If the value provided contains leading spaces then all leading spaces will be trimmed from the value during further validation of the data value provided Field may only contain whole numbers 			
Business Rules (compliance required)			
<ul style="list-style-type: none"> Field must contain a valid Provider_ETQE_Id 			
Business Rules (informational)			
<ul style="list-style-type: none"> Not applicable 			

Field Name	Seeing_Rating_Id	Field Number	36
Start Position	772	Field Length	2
Content Rules			
<ul style="list-style-type: none"> This field may be left blank Field may not start with a space. If the value provided contains leading spaces then all leading spaces will be trimmed from the value during further validation of the data value provided Field may only contain whole numbers 			
Business Rules (compliance required)			
<ul style="list-style-type: none"> Field must contain a valid Seeing_Rating_Id 			

Field Name	Seeing_Rating_Id	Field Number	36
Business Rules (informational)			
<ul style="list-style-type: none"> • Not applicable 			

Field Name	Hearing_Rating_Id	Field Number	37
Start Position	774	Field Length	2
Content Rules			
<ul style="list-style-type: none"> • This field may be left blank • Field may not start with a space. If the value provided contains leading spaces then all leading spaces will be trimmed from the value during further validation of the data value provided • Field may only contain whole numbers 			
Business Rules (compliance required)			
<ul style="list-style-type: none"> • Field must contain a valid Hearing_Rating_Id 			
Business Rules (informational)			
<ul style="list-style-type: none"> • Not applicable 			

Field Name	Walking_Rating_Id	Field Number	38
Start Position	776	Field Length	2
Content Rules			
<ul style="list-style-type: none"> • This field may be left blank • Field may not start with a space. If the value provided contains leading spaces then all leading spaces will be trimmed from the value during further validation of the data value provided • Field may only contain whole numbers 			
Business Rules (compliance required)			
<ul style="list-style-type: none"> • Field must contain a valid Walking_Rating_Id 			
Business Rules (informational)			
<ul style="list-style-type: none"> • Not applicable 			

Field Name	Remembering_Rating_Id	Field Number	39
Start Position	778	Field Length	2
Content Rules			
<ul style="list-style-type: none"> • This field may be left blank • Field may not start with a space. If the value provided contains leading spaces then all leading spaces will be trimmed from the value during further validation of the data value provided • Field may only contain whole numbers 			
Business Rules (compliance required)			
<ul style="list-style-type: none"> • Field must contain a valid Remembering_Rating_Id 			
Business Rules (informational)			
<ul style="list-style-type: none"> • Not applicable 			

Field Name	Communicating_Rating_Id	Field Number	40
Start Position	780	Field Length	2
Content Rules			
<ul style="list-style-type: none"> • This field may be left blank • Field may not start with a space. If the value provided contains leading spaces then all leading spaces will be trimmed from the value during further validation of the data value provided • Field may only contain whole numbers 			
Business Rules (compliance required)			
<ul style="list-style-type: none"> • Field must contain a valid Communicating_Rating_Id 			
Business Rules (informational)			
<ul style="list-style-type: none"> • Not applicable 			

Field Name	Self_Care_Rating_Id	Field Number	41
Start Position	782	Field Length	2
Content Rules			
<ul style="list-style-type: none"> This field may be left blank Field may not start with a space. If the value provided contains leading spaces then all leading spaces will be trimmed from the value during further validation of the data value provided Field may only contain whole numbers 			
Business Rules (compliance required)			
<ul style="list-style-type: none"> Field must contain a valid Self_Care_Rating_Id 			
Business Rules (informational)			
<ul style="list-style-type: none"> Not applicable 			

Field Name	Last_School_EMIS_No	Field Number	42
Start Position	784	Field Length	20
Content Rules			
<ul style="list-style-type: none"> This field may be left blank Field may not start with a space. If the value provided contains leading spaces then all leading spaces will be trimmed from the value during further validation of the data value provided Uppercase value in field may only contain characters 1234567890 			
Business Rules (compliance required)			
<ul style="list-style-type: none"> Field must contain a valid Last_School_EMIS_No Value must be provided if Date_Stamp has a value great than 20170701 			
Business Rules (informational)			
<ul style="list-style-type: none"> Not applicable 			

Field Name	Last_School_Year	Field Number	43
Start Position	804	Field Length	4
Content Rules			
<ul style="list-style-type: none"> This field may be left blank Field may not start with a space. If the value provided contains leading spaces then all leading spaces will be trimmed from the value during further validation of the data value provided Field may only contain a valid year in the format YYYY 			
Business Rules (compliance required)			
<ul style="list-style-type: none"> Value must be provided if Date_Stamp has a value great than 20170701 			
Business Rules (informational)			
<ul style="list-style-type: none"> Not applicable 			

Field Name	STATSSA_Area_Code	Field Number	44
Start Position	808	Field Length	20
Content Rules			
<ul style="list-style-type: none"> This field may be left blank Field may not start with a space. If the value provided contains leading spaces then all leading spaces will be trimmed from the value during further validation of the data value provided Uppercase value in field may only contain characters 1234567890 ()- 			
Business Rules (compliance required)			
<ul style="list-style-type: none"> Field must contain a valid STATSSA_Area_Code Value must be provided if Date_Stamp has a value great than 20170701 			
Business Rules (informational)			
<ul style="list-style-type: none"> Not applicable 			

Field Name	POPI_Act_Status_ID	Field Number	45
Start Position	828	Field Length	2
Content Rules			

Field Name	POPI_Act_Status_ID	Field Number	45
<ul style="list-style-type: none"> This field may not be left blank Field may not start with a space. If the value provided contains leading spaces then all leading spaces will be trimmed from the value during further validation of the data value provided Field may only contain whole numbers 			
Business Rules (compliance required)			
<ul style="list-style-type: none"> Field must contain a valid POPI_Act_Status_ID Value provided must be set to 0 (N/A) until the POPI Act has been implemented (Date_Stamp is compared against implementation date) 			
Business Rules (informational)			
<ul style="list-style-type: none"> Not applicable 			

Field Name	POPI_Act_Status_Date	Field Number	46
Start Position	830	Field Length	8
Content Rules			
<ul style="list-style-type: none"> This field may be left blank Field may not start with a space. If the value provided contains leading spaces then all leading spaces will be trimmed from the value during further validation of the data value provided Field may only contain a valid date in the format YYYYMMDD 			
Business Rules (compliance required)			
<ul style="list-style-type: none"> Field may not have a value greater than today's date Value must be provided if POPI_Act_Status_ID has a value of 1 or 2 Field must be blank if POPI_Act_Status_ID does not have a value of 1 or 2 			
Business Rules (informational)			
<ul style="list-style-type: none"> Not applicable 			

Field Name	Date_Stamp	Field Number	47
Start Position	838	Field Length	8
Content Rules			
<ul style="list-style-type: none"> This field may not be left blank Field may not start with a space. If the value provided contains leading spaces then all leading spaces will be trimmed from the value during further validation of the data value provided Field may only contain a valid date in the format YYYYMMDD 			
Business Rules (compliance required)			
<ul style="list-style-type: none"> Field may not have a value greater than today's date Year component of field value may not be less than 1900 			
Business Rules (informational)			
<ul style="list-style-type: none"> The system will display the maximum number of records with the same value for this field 			

5.5 Person Designation

File code 401

File naming standard

[Code]_0006_401_v001_YYYYMMDD.dat where:

- [Code] is the submitting ETQE's mnemonic identifier as recorded on the National Learners' Records Database in the format cccc. For example AGRI indicates the Agriculture Sector Education and Training Authority.
- 0006 indicates that the recipient information system to which this data will be submitted is SETMIS.
- v001 indicates that the submission has been extracted in accordance with version 1 of this specification
- YYYYMMDD represents the date on which the data submission was created.
- .dat is the file extension

Description

This file describes the designation of people.

This file is a modified version of the National Learners' Records Database (NLRD) File Number 26

General information:

A count of the number of records found in the file will be recorded in the aggregated report under the General information heading.

The **Date_Stamp** field must reflect the date on which a particular record was last updated. The field will be used by the recipient system to ensure that an older version of a record does not overwrite a more recent version of a record.

Submission requirements: Submission of this file is mandatory.

File record length: The length of each record must be exactly 188.

File fields

Field Name	National_Id	Field Number	1
Start Position	1	Field Length	15
Content Rules			
<ul style="list-style-type: none"> • This field may be left blank • Field may not start with a space. If the value provided contains leading spaces then all leading spaces will be trimmed from the value during further validation of the data value provided • Uppercase value in field may only contain characters 1234567890 			
Business Rules (compliance required)			
<ul style="list-style-type: none"> • The combination of National_Id, Person_Alternate_Id, Alternate_Id_Type_Id, Designation_Id, Provider_Code and Provider_ETQE_Id must be unique 			
Business Rules (informational)			
<ul style="list-style-type: none"> • Not applicable 			

Field Name	Person_Alternate_Id	Field Number	2
Start Position	16	Field Length	20
Content Rules			
<ul style="list-style-type: none"> • This field may be left blank • Field may not start with a space. If the value provided contains leading spaces then all leading spaces will be trimmed from the value during further validation of the data value provided 			

Field Name	Person_Alternate_Id	Field Number	2
<ul style="list-style-type: none"> Uppercase value in field may only contain characters ABCDEFGHIJKLMNOPQRSTUVWXYZ-1234567890@_ 			
Business Rules (compliance required)			
<ul style="list-style-type: none"> Not applicable 			
Business Rules (informational)			
<ul style="list-style-type: none"> Not applicable 			

Field Name	Alternate_Id_Type_Id	Field Number	3
Start Position	36	Field Length	3
Content Rules			
<ul style="list-style-type: none"> This field may not be left blank Field may not start with a space. If the value provided contains leading spaces then all leading spaces will be trimmed from the value during further validation of the data value provided Field may only contain whole numbers 			
Business Rules (compliance required)			
<ul style="list-style-type: none"> Field must contain a valid Alternate_Id_Type_Id Field may not equal 537 If Alternate_Id_Type_Id <> 537 then the combination of Alternate_Id_Type_Id, Person_Alternate_Id and National_Id must exist in parent file 400 - Person 			
Business Rules (informational)			
<ul style="list-style-type: none"> Not applicable 			

Field Name	Designation_Id	Field Number	4
Start Position	39	Field Length	5
Content Rules			
<ul style="list-style-type: none"> This field may not be left blank Field may not start with a space. If the value provided contains leading spaces then all leading spaces will be trimmed from the value during further validation of the data value provided Field may only contain whole numbers 			
Business Rules (compliance required)			
<ul style="list-style-type: none"> Field must contain a valid Designation_Id 			
Business Rules (informational)			
<ul style="list-style-type: none"> Not applicable 			

Field Name	Designation_Registration_Number	Field Number	5
Start Position	44	Field Length	20
Content Rules			
<ul style="list-style-type: none"> This field may not be left blank Field may not start with a space. If the value provided contains leading spaces then all leading spaces will be trimmed from the value during further validation of the data value provided Uppercase value in field may only contain characters ABCDEFGHIJKLMNOPQRSTUVWXYZ1234567890@#&+() \/:.- 			
Business Rules (compliance required)			
<ul style="list-style-type: none"> Uppercase value in field may not contain characters %UNKNOWN% or %AS ABOVE% or %SOOS BO% or %DELETE% or N/A or NA or U or NONE or GEEN or 0 or TEST or %ONTBREEK% or NIL or - or - The combination of Designation_Registration_Number, Provider_Code and Provider_ETQE_Id must be unique 			
Business Rules (informational)			
<ul style="list-style-type: none"> Not applicable 			

Field Name	Designation_ETQE_Id	Field Number	6
Start Position	64	Field Length	10

Field Name	Designation_ETQE_Id	Field Number	6
Content Rules			
<ul style="list-style-type: none"> This field may not be left blank Field may not start with a space. If the value provided contains leading spaces then all leading spaces will be trimmed from the value during further validation of the data value provided Field may only contain whole numbers 			
Business Rules (compliance required)			
<ul style="list-style-type: none"> Field must contain a valid ETQE_Id 			
Business Rules (informational)			
<ul style="list-style-type: none"> Not applicable 			

Field Name	Designation_Start_Date	Field Number	7
Start Position	74	Field Length	8
Content Rules			
<ul style="list-style-type: none"> This field may not be left blank Field may not start with a space. If the value provided contains leading spaces then all leading spaces will be trimmed from the value during further validation of the data value provided Field may only contain a valid date in the format YYYYMMDD 			
Business Rules (compliance required)			
<ul style="list-style-type: none"> Designation_Start_Date may not be greater than Designation_End_Date Field may not have a value greater than today's date Year component of field value may not be less than 1900 			
Business Rules (informational)			
<ul style="list-style-type: none"> The system will display the maximum number of records with the same value for this field 			

Field Name	Designation_End_Date	Field Number	8
Start Position	82	Field Length	8
Content Rules			
<ul style="list-style-type: none"> This field may be left blank Field may not start with a space. If the value provided contains leading spaces then all leading spaces will be trimmed from the value during further validation of the data value provided Field may only contain a valid date in the format YYYYMMDD 			
Business Rules (compliance required)			
<ul style="list-style-type: none"> Year component of field value may not be less than 1900 			
Business Rules (informational)			
<ul style="list-style-type: none"> The system will display the maximum number of records with the same value for this field 			

Field Name	Designation_Structure_Status_Id	Field Number	9
Start Position	90	Field Length	10
Content Rules			
<ul style="list-style-type: none"> This field may not be left blank Field may not start with a space. If the value provided contains leading spaces then all leading spaces will be trimmed from the value during further validation of the data value provided Field may only contain whole numbers 			
Business Rules (compliance required)			
<ul style="list-style-type: none"> Field must contain a valid Designation_Structure_Status_Id If Designation_Structure_Status_Id has a value of 501, 505 then Designation_End_Date may not be blank If Designation_Structure_Status_Id does not have a value of 501, 505 then Designation_End_Date must be blank 			
Business Rules (informational)			
<ul style="list-style-type: none"> Not applicable 			

Field Name	ETQE_Decision_Number	Field Number	10
Start Position	100	Field Length	20
Content Rules			
<ul style="list-style-type: none"> • This field may be left blank • Field may not start with a space. If the value provided contains leading spaces then all leading spaces will be trimmed from the value during further validation of the data value provided • Field may only contain whole numbers 			
Business Rules (compliance required)			
<ul style="list-style-type: none"> • The combination of ETQE_Decision_Number, Provider_Code and Provider_ETQE_Id must be unique 			
Business Rules (informational)			
<ul style="list-style-type: none"> • Not applicable 			

Field Name	Provider_Code	Field Number	11
Start Position	120	Field Length	20
Content Rules			
<ul style="list-style-type: none"> • This field may be left blank • Field may not start with a space. If the value provided contains leading spaces then all leading spaces will be trimmed from the value during further validation of the data value provided • Uppercase value in field may only contain characters ABCDEFGHIJKLMNOPQRSTUVWXYZ1234567890@#&+() \/:._- 			
Business Rules (compliance required)			
<ul style="list-style-type: none"> • The combination Provider_Code and Provider_ETQE_Id must be valid. The combination of Provider_Code and Provider_ETQE_Id must exist on 101 - Provider 			
Business Rules (informational)			
<ul style="list-style-type: none"> • Not applicable 			

Field Name	Provider_ETQE_Id	Field Number	12
Start Position	140	Field Length	10
Content Rules			
<ul style="list-style-type: none"> • This field may be left blank • Field may not start with a space. If the value provided contains leading spaces then all leading spaces will be trimmed from the value during further validation of the data value provided • Field may only contain whole numbers 			
Business Rules (compliance required)			
<ul style="list-style-type: none"> • Field must contain a valid Provider_ETQE_Id 			
Business Rules (informational)			
<ul style="list-style-type: none"> • Not applicable 			

Field Name	Filler01	Field Number	13
Start Position	150	Field Length	10
Content Rules			
<ul style="list-style-type: none"> • Not applicable 			
Business Rules (compliance required)			
<ul style="list-style-type: none"> • This is a filler field and must be left blank 			
Business Rules (informational)			
<ul style="list-style-type: none"> • Not applicable 			

Field Name	Filler02	Field Number	14
Start Position	160	Field Length	10
Content Rules			
<ul style="list-style-type: none"> • Not applicable 			
Business Rules (compliance required)			

Field Name	Filler02	Field Number	14
<ul style="list-style-type: none"> This is a filler field and must be left blank 			
Business Rules (informational)			
<ul style="list-style-type: none"> Not applicable 			

Field Name	Filler03	Field Number	15
Start Position	170	Field Length	10
Content Rules			
<ul style="list-style-type: none"> Not applicable 			
Business Rules (compliance required)			
<ul style="list-style-type: none"> This is a filler field and must be left blank 			
Business Rules (informational)			
<ul style="list-style-type: none"> Not applicable 			

Field Name	Date_Stamp	Field Number	16
Start Position	180	Field Length	8
Content Rules			
<ul style="list-style-type: none"> This field may not be left blank Field may not start with a space. If the value provided contains leading spaces then all leading spaces will be trimmed from the value during further validation of the data value provided Field may only contain a valid date in the format YYYYMMDD 			
Business Rules (compliance required)			
<ul style="list-style-type: none"> Field may not have a value greater than today's date Year component of field value may not be less than 1900 			
Business Rules (informational)			
<ul style="list-style-type: none"> The system will display the maximum number of records with the same value for this field 			

5.6 Learnership Enrolment

File code 500

File naming standard

[Code]_0006_500_v001_YYYYMMDD.dat where:

- [Code] is the submitting ETQE's mnemonic identifier as recorded on the National Learners' Records Database in the format cccc. For example AGRI indicates the Agriculture Sector Education and Training Authority.
- 0006 indicates that the recipient information system to which this data will be submitted is SETMIS.
- v001 indicates that the submission has been extracted in accordance with version 1 of this specification
- YYYYMMDD represents the date on which the data submission was created.
- .dat is the file extension

Description

This file describes all learnership enrolments/achievements.

This file is a modified version of the National Learners' Records Database (NLRD) File Number 28

General information:

A count of the number of records found in the file will be recorded in the aggregated report under the General information heading.

The **Date_Stamp** field must reflect the date on which a particular record was last updated. The field will be used by the recipient system to ensure that an older version of a record does not overwrite a more recent version of a record.

Submission requirements: Submission of this file is mandatory.

File record length: The length of each record must be exactly 259.

File fields

Field Name	National_Id	Field Number	1
Start Position	1	Field Length	15
Content Rules			
<ul style="list-style-type: none"> • This field may be left blank • Field may not start with a space. If the value provided contains leading spaces then all leading spaces will be trimmed from the value during further validation of the data value provided • Uppercase value in field may only contain characters 1234567890 			
Business Rules (compliance required)			
<ul style="list-style-type: none"> • The combination of National_Id, Person_Alternate_Id, Alternate_Id_Type_Id, Learnership_Id, Provider_Code and Provider_ETQE_Id must be unique 			
Business Rules (informational)			
<ul style="list-style-type: none"> • Not applicable 			

Field Name	Person_Alternate_Id	Field Number	2
Start Position	16	Field Length	20
Content Rules			
<ul style="list-style-type: none"> • This field may be left blank • Field may not start with a space. If the value provided contains leading spaces then all leading spaces will be trimmed from the value during further validation of the data value provided 			

Field Name	Person_Alternate_Id	Field Number	2
<ul style="list-style-type: none"> Uppercase value in field may only contain characters ABCDEFGHIJKLMNOPQRSTUVWXYZ-1234567890@_ 			
Business Rules (compliance required)			
<ul style="list-style-type: none"> Not applicable 			
Business Rules (informational)			
<ul style="list-style-type: none"> Not applicable 			

Field Name	Alternate_Id_Type_Id	Field Number	3
Start Position	36	Field Length	3
Content Rules			
<ul style="list-style-type: none"> This field may not be left blank Field may not start with a space. If the value provided contains leading spaces then all leading spaces will be trimmed from the value during further validation of the data value provided Field may only contain whole numbers 			
Business Rules (compliance required)			
<ul style="list-style-type: none"> Field must contain a valid Alternate_Id_Type_Id If Alternate_Id_Type_Id = 537 then the combination of Alternate_Id_Type_Id, Person_Alternate_Id, National_Id, Provider_Code and Provider_ETQE_Id must exist in parent file 400 - Person If Alternate_Id_Type_Id <> 537 then the combination of Alternate_Id_Type_Id, National_Id and Person_Alternate_Id must exist in parent file 400 - Person 			
Business Rules (informational)			
<ul style="list-style-type: none"> Not applicable 			

Field Name	Learnership_Id	Field Number	4
Start Position	39	Field Length	10
Content Rules			
<ul style="list-style-type: none"> This field may not be left blank Field may not start with a space. If the value provided contains leading spaces then all leading spaces will be trimmed from the value during further validation of the data value provided Field may only contain whole numbers 			
Business Rules (compliance required)			
<ul style="list-style-type: none"> Field must contain a valid Learnership_Id 			
Business Rules (informational)			
<ul style="list-style-type: none"> Not applicable 			

Field Name	Enrolment_Status_Id	Field Number	5
Start Position	49	Field Length	3
Content Rules			
<ul style="list-style-type: none"> This field may not be left blank Field may not start with a space. If the value provided contains leading spaces then all leading spaces will be trimmed from the value during further validation of the data value provided Field may only contain whole numbers 			
Business Rules (compliance required)			
<ul style="list-style-type: none"> Field must contain a valid Enrolment_Status_Id If Enrolment_Status_Id does not have a value of 10 then Enrolment_Status_Reason_Id must be blank If Enrolment_Status_Id has a value of 10 then Enrolment_Status_Reason_Id must have a value If Enrolment_Status_Id = 15 then a value for Certificate_Number must be provided If Enrolment_Status_Id does not have a value 15 then Certificate_Number must be blank 			
Business Rules (informational)			
<ul style="list-style-type: none"> Not applicable 			

Field Name	Assessor_Registration_Number	Field Number	6
Start Position	52	Field Length	20
Content Rules			
<ul style="list-style-type: none"> This field may be left blank Field may not start with a space. If the value provided contains leading spaces then all leading spaces will be trimmed from the value during further validation of the data value provided Uppercase value in field may only contain characters ABCDEFGHIJKLMNOPQRSTUVWXYZ1234567890@#&+() \/:_ - 			
Business Rules (compliance required)			
<ul style="list-style-type: none"> The combination Assessor_Registration_Number and Assessor_ETQE_Id must exist in parent file 401 - Person Designation as Designation_Registration_Number and Designation_ETQE_Id with Designation_id = 1 			
Business Rules (informational)			
<ul style="list-style-type: none"> Not applicable 			

Field Name	Enrolment_Status_Date	Field Number	7
Start Position	72	Field Length	8
Content Rules			
<ul style="list-style-type: none"> This field may not be left blank Field may not start with a space. If the value provided contains leading spaces then all leading spaces will be trimmed from the value during further validation of the data value provided Field may only contain a valid date in the format YYYYMMDD 			
Business Rules (compliance required)			
<ul style="list-style-type: none"> Field may not have a value greater than today's date Year component of field value may not be less than 1900 			
Business Rules (informational)			
<ul style="list-style-type: none"> The system will display the maximum number of records with the same value for this field 			

Field Name	Enrolment_Date	Field Number	8
Start Position	80	Field Length	8
Content Rules			
<ul style="list-style-type: none"> This field may not be left blank Field may not start with a space. If the value provided contains leading spaces then all leading spaces will be trimmed from the value during further validation of the data value provided Field may only contain a valid date in the format YYYYMMDD 			
Business Rules (compliance required)			
<ul style="list-style-type: none"> Enrolment_Date may not be greater than Most_Recent_Registration_Date Enrolment_Date may not be greater than Enrolment_Status_Date Field may not have a value greater than today's date Year component of field value may not be less than 1900 			
Business Rules (informational)			
<ul style="list-style-type: none"> The system will display the maximum number of records with the same value for this field 			

Field Name	Provider_Code	Field Number	9
Start Position	88	Field Length	20
Content Rules			
<ul style="list-style-type: none"> This field may not be left blank Field may not start with a space. If the value provided contains leading spaces then all leading spaces will be trimmed from the value during further validation of the data value provided Uppercase value in field may only contain characters ABCDEFGHIJKLMNOPQRSTUVWXYZ1234567890@#&+() \/:_ - 			
Business Rules (compliance required)			
<ul style="list-style-type: none"> The combination Provider_Code and Provider_ETQE_Id must be valid. The combination of Provider_Code and Provider_ETQE_Id must exist on 101 - Provider 			

Field Name	Provider_Code	Field Number	9
Business Rules (informational)			
<ul style="list-style-type: none"> Not applicable 			

Field Name	Provider_ETQE_Id	Field Number	10
Start Position	108	Field Length	10
Content Rules			
<ul style="list-style-type: none"> This field may not be left blank Field may not start with a space. If the value provided contains leading spaces then all leading spaces will be trimmed from the value during further validation of the data value provided Field may only contain whole numbers 			
Business Rules (compliance required)			
<ul style="list-style-type: none"> Field must contain a valid Provider_ETQE_Id 			
Business Rules (informational)			
<ul style="list-style-type: none"> Not applicable 			

Field Name	Assessor_ETQE_Id	Field Number	11
Start Position	118	Field Length	10
Content Rules			
<ul style="list-style-type: none"> This field may be left blank Field may not start with a space. If the value provided contains leading spaces then all leading spaces will be trimmed from the value during further validation of the data value provided Field may only contain whole numbers 			
Business Rules (compliance required)			
<ul style="list-style-type: none"> Field must contain a valid ETQE_Id 			
Business Rules (informational)			
<ul style="list-style-type: none"> Not applicable 			

Field Name	Enrolment_Status_Reason_Id	Field Number	12
Start Position	128	Field Length	10
Content Rules			
<ul style="list-style-type: none"> This field may be left blank Field may not start with a space. If the value provided contains leading spaces then all leading spaces will be trimmed from the value during further validation of the data value provided Field may only contain whole numbers 			
Business Rules (compliance required)			
<ul style="list-style-type: none"> Field must contain a valid Enrolment_Status_Reason_Id 			
Business Rules (informational)			
<ul style="list-style-type: none"> Not applicable 			

Field Name	Most_Recent_Registration_Date	Field Number	13
Start Position	138	Field Length	8
Content Rules			
<ul style="list-style-type: none"> This field may not be left blank Field may not start with a space. If the value provided contains leading spaces then all leading spaces will be trimmed from the value during further validation of the data value provided Field may only contain a valid date in the format YYYYMMDD 			
Business Rules (compliance required)			
<ul style="list-style-type: none"> Most_Recent_Registration_Date may not be greater than Enrolment_Status_Date Field may not have a value greater than today's date Year component of field value may not be less than 1900 			
Business Rules (informational)			
<ul style="list-style-type: none"> The system will display the maximum number of records with the same value for this field 			

Field Name	Certificate_Number	Field Number	14
Start Position	146	Field Length	30
Content Rules			
<ul style="list-style-type: none"> This field may be left blank Field may not start with a space. If the value provided contains leading spaces then all leading spaces will be trimmed from the value during further validation of the data value provided Uppercase value in field may only contain characters ABCDEFGHIJKLMNOPQRSTUVWXYZ1234567890@#&+() / \ : . _ - 			
Business Rules (compliance required)			
<ul style="list-style-type: none"> Not applicable 			
Business Rules (informational)			
<ul style="list-style-type: none"> Not applicable 			

Field Name	Economic_Status_Id	Field Number	15
Start Position	176	Field Length	10
Content Rules			
<ul style="list-style-type: none"> This field may not be left blank Field may not start with a space. If the value provided contains leading spaces then all leading spaces will be trimmed from the value during further validation of the data value provided Field may only contain whole numbers 			
Business Rules (compliance required)			
<ul style="list-style-type: none"> Field must contain a valid Economic_Status_Id 			
Business Rules (informational)			
<ul style="list-style-type: none"> Not applicable 			

Field Name	Funding_Id	Field Number	16
Start Position	186	Field Length	10
Content Rules			
<ul style="list-style-type: none"> This field may not be left blank Field may not start with a space. If the value provided contains leading spaces then all leading spaces will be trimmed from the value during further validation of the data value provided Field may only contain whole numbers 			
Business Rules (compliance required)			
<ul style="list-style-type: none"> Field must contain a valid Funding_Id Funding_Id may only have a value of 1, 2 or 4 			
Business Rules (informational)			
<ul style="list-style-type: none"> Not applicable 			

Field Name	Cumulative_Spend	Field Number	17
Start Position	196	Field Length	10
Content Rules			
<ul style="list-style-type: none"> This field may be left blank Field may not start with a space. If the value provided contains leading spaces then all leading spaces will be trimmed from the value during further validation of the data value provided Field may only contain whole numbers 			
Business Rules (compliance required)			
<ul style="list-style-type: none"> Cumulative_Spend may only have a value if Funding_Id has a value of 1 			
Business Rules (informational)			
<ul style="list-style-type: none"> Not applicable 			

Field Name	OFO_Code	Field Number	18
Start Position	206	Field Length	15

Field Name	OFO_Code	Field Number	18
Content Rules			
<ul style="list-style-type: none"> This field may be left blank Field may not start with a space. If the value provided contains leading spaces then all leading spaces will be trimmed from the value during further validation of the data value provided Field may only contain whole numbers 			
Business Rules (compliance required)			
<ul style="list-style-type: none"> Field must contain a valid OFO_Code Value must be provided if Date_Stamp has a value great than 20170701 			
Business Rules (informational)			
<ul style="list-style-type: none"> Not applicable 			

Field Name	SDL_No	Field Number	19
Start Position	221	Field Length	10
Content Rules			
<ul style="list-style-type: none"> This field may not be left blank Field may not start with a space. If the value provided contains leading spaces then all leading spaces will be trimmed from the value during further validation of the data value provided Value in field may only contain characters L0123456789 OR N0123456789 			
Business Rules (compliance required)			
<ul style="list-style-type: none"> Value must be provided if Economic_Status_Id has a value of 1 or 3 The combination SDL_No and Site_No must be valid. The combination of SDL_No and Site_No must exist on 200 - Employer 			
Business Rules (informational)			
<ul style="list-style-type: none"> Not applicable 			

Field Name	Site_No	Field Number	20
Start Position	231	Field Length	10
Content Rules			
<ul style="list-style-type: none"> This field may not be left blank Field may not start with a space. If the value provided contains leading spaces then all leading spaces will be trimmed from the value during further validation of the data value provided Uppercase value in field may only contain characters ABCDEFGHIJKLMNOPQRSTUVWXYZ1234567890@#&+() \/:._- 			
Business Rules (compliance required)			
<ul style="list-style-type: none"> Not applicable 			
Business Rules (informational)			
<ul style="list-style-type: none"> Not applicable 			

Field Name	Urban_Rural_ID	Field Number	21
Start Position	241	Field Length	10
Content Rules			
<ul style="list-style-type: none"> This field may not be left blank Field may not start with a space. If the value provided contains leading spaces then all leading spaces will be trimmed from the value during further validation of the data value provided Field may only contain whole numbers 			
Business Rules (compliance required)			
<ul style="list-style-type: none"> Field must contain a valid Urban_Rural_ID 			
Business Rules (informational)			
<ul style="list-style-type: none"> Not applicable 			

Field Name	Date_Stamp	Field Number	22
Start Position	251	Field Length	8
Content Rules			

Field Name	Date_Stamp	Field Number	22
<ul style="list-style-type: none"> • This field may not be left blank • Field may not start with a space. If the value provided contains leading spaces then all leading spaces will be trimmed from the value during further validation of the data value provided • Field may only contain a valid date in the format YYYYMMDD 			
Business Rules (compliance required)			
<ul style="list-style-type: none"> • Field may not have a value greater than today's date • Year component of field value may not be less than 1900 			
Business Rules (informational)			
<ul style="list-style-type: none"> • The system will display the maximum number of records with the same value for this field 			

5.7 Qualification Enrolment

File code 501

File naming standard

[Code]_0006_501_v001_YYYYMMDD.dat where:

- [Code] is the submitting ETQE's mnemonic identifier as recorded on the National Learners' Records Database in the format cccc. For example AGRI indicates the Agriculture Sector Education and Training Authority.
- 0006 indicates that the recipient information system to which this data will be submitted is SETMIS.
- v001 indicates that the submission has been extracted in accordance with version 1 of this specification
- YYYYMMDD represents the date on which the data submission was created.
- .dat is the file extension

Description

This file describes all qualification enrolments/achievements.

This file is a modified version of the National Learners' Records Database (NLRD) File Number 29

General information:

A count of the number of records found in the file will be recorded in the aggregated report under the General information heading.

The **Date_Stamp** field must reflect the date on which a particular record was last updated. The field will be used by the recipient system to ensure that an older version of a record does not overwrite a more recent version of a record.

Submission requirements: Submission of this file is mandatory.

File record length: The length of each record must be exactly 412.

File fields

Field Name	National_Id	Field Number	1
Start Position	1	Field Length	15
Content Rules			
<ul style="list-style-type: none"> • This field may be left blank • Field may not start with a space. If the value provided contains leading spaces then all leading spaces will be trimmed from the value during further validation of the data value provided • Uppercase value in field may only contain characters 1234567890 			
Business Rules (compliance required)			
<ul style="list-style-type: none"> • The combination of National_Id, Person_Alternate_Id, Alternate_Id_Type_Id, Qualification_Id, Provider_Code and Provider_ETQE_Id must be unique 			
Business Rules (informational)			
<ul style="list-style-type: none"> • Not applicable 			

Field Name	Person_Alternate_Id	Field Number	2
Start Position	16	Field Length	20
Content Rules			
<ul style="list-style-type: none"> • This field may be left blank • Field may not start with a space. If the value provided contains leading spaces then all leading spaces will be trimmed from the value during further validation of the data value provided 			

Field Name	Person_Alternate_Id	Field Number	2
<ul style="list-style-type: none"> Uppercase value in field may only contain characters ABCDEFGHIJKLMNOPQRSTUVWXYZ-1234567890@_ 			
Business Rules (compliance required)			
<ul style="list-style-type: none"> Not applicable 			
Business Rules (informational)			
<ul style="list-style-type: none"> Not applicable 			

Field Name	Alternate_Id_Type_Id	Field Number	3
Start Position	36	Field Length	3
Content Rules			
<ul style="list-style-type: none"> This field may not be left blank Field may not start with a space. If the value provided contains leading spaces then all leading spaces will be trimmed from the value during further validation of the data value provided Field may only contain whole numbers 			
Business Rules (compliance required)			
<ul style="list-style-type: none"> Field must contain a valid Alternate_Id_Type_Id If Alternate_Id_Type_Id = 537 then the combination of Alternate_Id_Type_Id, Person_Alternate_Id, National_Id, Provider_Code and Provider_ETQE_Id must exist in parent file 400 - Person If Alternate_Id_Type_Id <> 537 then the combination of Alternate_Id_Type_Id, National_Id and Person_Alternate_Id must exist in parent file 400 - Person 			
Business Rules (informational)			
<ul style="list-style-type: none"> Not applicable 			

Field Name	Qualification_Id	Field Number	4
Start Position	39	Field Length	10
Content Rules			
<ul style="list-style-type: none"> This field may not be left blank Field may not start with a space. If the value provided contains leading spaces then all leading spaces will be trimmed from the value during further validation of the data value provided Field may only contain whole numbers 			
Business Rules (compliance required)			
<ul style="list-style-type: none"> Field must contain a valid Qualification_Id. Must contain a valid SAQA Qualification ID as registered on the National Qualifications Framework (NQF) Practical_Provider_Code and Practical_Provider_ETQE_Id must be provided if Qualification_Id represents a trade qualification Practical_Provider_Code and Practical_Provider_ETQE_Id must be blank Qualification_Id does not represent a trade qualification 			
Business Rules (informational)			
<ul style="list-style-type: none"> Not applicable 			

Field Name	Enrolment_Status_Id	Field Number	5
Start Position	49	Field Length	3
Content Rules			
<ul style="list-style-type: none"> This field may not be left blank Field may not start with a space. If the value provided contains leading spaces then all leading spaces will be trimmed from the value during further validation of the data value provided Field may only contain whole numbers 			
Business Rules (compliance required)			
<ul style="list-style-type: none"> Field must contain a valid Enrolment_Status_Id If Enrolment_Status_Id does not have a value of 10 then Enrolment_Status_Reason_Id must be blank If Enrolment_Status_Id has a value of 10 then Enrolment_Status_Reason_Id must have a value If Enrolment_Status_Id = 15 then a value for Certificate_Number must be provided 			

Field Name	Enrolment_Status_Id	Field Number	5
<ul style="list-style-type: none"> If Enrolment_Status_Id does not have a value 15 then Certificate_Number must be blank 			
Business Rules (informational)			
<ul style="list-style-type: none"> Not applicable 			

Field Name	Assessor_Registration_Number	Field Number	6
Start Position	52	Field Length	20
Content Rules			
<ul style="list-style-type: none"> This field may be left blank Field may not start with a space. If the value provided contains leading spaces then all leading spaces will be trimmed from the value during further validation of the data value provided Uppercase value in field may only contain characters ABCDEFGHIJKLMNOPQRSTUVWXYZ1234567890@#&+() \/:._- 			
Business Rules (compliance required)			
<ul style="list-style-type: none"> The combination Assessor_Registration_Number and Assessor_ETQE_Id must exist in parent file 401 - Person Designation as Designation_Registration_Number and Designation_ETQE_Id with Designation_id = 1 			
Business Rules (informational)			
<ul style="list-style-type: none"> Not applicable 			

Field Name	Enrolment_Type_Id	Field Number	7
Start Position	72	Field Length	3
Content Rules			
<ul style="list-style-type: none"> This field may not be left blank Field may not start with a space. If the value provided contains leading spaces then all leading spaces will be trimmed from the value during further validation of the data value provided Field may only contain whole numbers 			
Business Rules (compliance required)			
<ul style="list-style-type: none"> Field must contain a valid Enrolment_Type_Id 			
Business Rules (informational)			
<ul style="list-style-type: none"> Not applicable 			

Field Name	Enrolment_Status_Date	Field Number	8
Start Position	75	Field Length	8
Content Rules			
<ul style="list-style-type: none"> This field may not be left blank Field may not start with a space. If the value provided contains leading spaces then all leading spaces will be trimmed from the value during further validation of the data value provided Field may only contain a valid date in the format YYYYMMDD 			
Business Rules (compliance required)			
<ul style="list-style-type: none"> Field may not have a value greater than today's date Year component of field value may not be less than 1900 			
Business Rules (informational)			
<ul style="list-style-type: none"> The system will display the maximum number of records with the same value for this field 			

Field Name	Enrolment_Date	Field Number	9
Start Position	83	Field Length	8
Content Rules			
<ul style="list-style-type: none"> This field may not be left blank Field may not start with a space. If the value provided contains leading spaces then all leading spaces will be trimmed from the value during further validation of the data value provided Field may only contain a valid date in the format YYYYMMDD 			
Business Rules (compliance required)			
<ul style="list-style-type: none"> Enrolment_Date may not be greater than Most_Recent_Registration_Date 			

Field Name	Enrolment_Date	Field Number	9
<ul style="list-style-type: none"> Enrolment_Date may not be greater than Enrolment_Status_Date Field may not have a value greater than today's date Year component of field value may not be less than 1900 			
Business Rules (informational)			
<ul style="list-style-type: none"> The system will display the maximum number of records with the same value for this field 			

Field Name	Filler01	Field Number	10
Start Position	91	Field Length	3
Content Rules			
<ul style="list-style-type: none"> Not applicable 			
Business Rules (compliance required)			
<ul style="list-style-type: none"> This is a filler field and must be left blank 			
Business Rules (informational)			
<ul style="list-style-type: none"> Not applicable 			

Field Name	Part_Of_Id	Field Number	11
Start Position	94	Field Length	2
Content Rules			
<ul style="list-style-type: none"> This field may not be left blank Field may not start with a space. If the value provided contains leading spaces then all leading spaces will be trimmed from the value during further validation of the data value provided Field may only contain whole numbers 			
Business Rules (compliance required)			
<ul style="list-style-type: none"> Field must contain a valid Part_Of_Id Field may only contain values 1,3,4 			
Business Rules (informational)			
<ul style="list-style-type: none"> Not applicable 			

Field Name	Learnership_Id	Field Number	12
Start Position	96	Field Length	10
Content Rules			
<ul style="list-style-type: none"> This field may be left blank Field may not start with a space. If the value provided contains leading spaces then all leading spaces will be trimmed from the value during further validation of the data value provided Field may only contain whole numbers 			
Business Rules (compliance required)			
<ul style="list-style-type: none"> Field must contain a valid Learnership_Id Field must have a value if Part_Of_Id = 3 The combination Learnership_Id and Qualification_Id must be valid Field may not have a value if Part_Of_Id <> 3 			
Business Rules (informational)			
<ul style="list-style-type: none"> Not applicable 			

Field Name	Provider_Code	Field Number	13
Start Position	106	Field Length	20
Content Rules			
<ul style="list-style-type: none"> This field may not be left blank Field may not start with a space. If the value provided contains leading spaces then all leading spaces will be trimmed from the value during further validation of the data value provided Uppercase value in field may only contain characters ABCDEFGHIJKLMNOPQRSTUVWXYZ1234567890@#&+() \/:.- 			
Business Rules (compliance required)			

Field Name	Provider_Code	Field Number	13
<ul style="list-style-type: none"> The combination Provider_Code and Provider_ETQE_Id must be valid. The combination of Provider_Code and Provider_ETQE_Id must exist on 101 - Provider 			
Business Rules (informational)			
<ul style="list-style-type: none"> Not applicable 			

Field Name	Provider_ETQE_Id	Field Number	14
Start Position	126	Field Length	10
Content Rules			
<ul style="list-style-type: none"> This field may not be left blank Field may not start with a space. If the value provided contains leading spaces then all leading spaces will be trimmed from the value during further validation of the data value provided Field may only contain whole numbers 			
Business Rules (compliance required)			
<ul style="list-style-type: none"> Field must contain a valid Provider_ETQE_Id 			
Business Rules (informational)			
<ul style="list-style-type: none"> Not applicable 			

Field Name	Assessor_ETQE_Id	Field Number	15
Start Position	136	Field Length	10
Content Rules			
<ul style="list-style-type: none"> This field may be left blank Field may not start with a space. If the value provided contains leading spaces then all leading spaces will be trimmed from the value during further validation of the data value provided Field may only contain whole numbers 			
Business Rules (compliance required)			
<ul style="list-style-type: none"> Field must contain a valid ETQE_Id 			
Business Rules (informational)			
<ul style="list-style-type: none"> Not applicable 			

Field Name	Filler02	Field Number	16
Start Position	146	Field Length	20
Content Rules			
<ul style="list-style-type: none"> Not applicable 			
Business Rules (compliance required)			
<ul style="list-style-type: none"> This is a filler field and must be left blank 			
Business Rules (informational)			
<ul style="list-style-type: none"> Not applicable 			

Field Name	Enrolment_Status_Reason_Id	Field Number	17
Start Position	166	Field Length	10
Content Rules			
<ul style="list-style-type: none"> This field may be left blank Field may not start with a space. If the value provided contains leading spaces then all leading spaces will be trimmed from the value during further validation of the data value provided Field may only contain whole numbers 			
Business Rules (compliance required)			
<ul style="list-style-type: none"> Field must contain a valid Enrolment_Status_Reason_Id 			
Business Rules (informational)			
<ul style="list-style-type: none"> Not applicable 			

Field Name	Most_Recent_Registration_Date	Field Number	18
Start Position	176	Field Length	8

Field Name	Most_Recent_Registration_Date	Field Number	18
Content Rules			
<ul style="list-style-type: none"> • This field may not be left blank • Field may not start with a space. If the value provided contains leading spaces then all leading spaces will be trimmed from the value during further validation of the data value provided • Field may only contain a valid date in the format YYYYMMDD 			
Business Rules (compliance required)			
<ul style="list-style-type: none"> • Most_Recent_Registration_Date may not be greater than Enrolment_Status_Date • Field may not have a value greater than today's date • Year component of field value may not be less than 1900 			
Business Rules (informational)			
<ul style="list-style-type: none"> • The system will display the maximum number of records with the same value for this field 			

Field Name	Certificate_Number	Field Number	19
Start Position	184	Field Length	30
Content Rules			
<ul style="list-style-type: none"> • This field may be left blank • Field may not start with a space. If the value provided contains leading spaces then all leading spaces will be trimmed from the value during further validation of the data value provided • Uppercase value in field may only contain characters ABCDEFGHIJKLMNOPQRSTUVWXYZ1234567890@#&+() \/:._- 			
Business Rules (compliance required)			
<ul style="list-style-type: none"> • Not applicable 			
Business Rules (informational)			
<ul style="list-style-type: none"> • Not applicable 			

Field Name	Filler03	Field Number	20
Start Position	214	Field Length	4
Content Rules			
<ul style="list-style-type: none"> • Not applicable 			
Business Rules (compliance required)			
<ul style="list-style-type: none"> • This is a filler field and must be left blank 			
Business Rules (informational)			
<ul style="list-style-type: none"> • Not applicable 			

Field Name	Filler04	Field Number	21
Start Position	218	Field Length	10
Content Rules			
<ul style="list-style-type: none"> • Not applicable 			
Business Rules (compliance required)			
<ul style="list-style-type: none"> • This is a filler field and must be left blank 			
Business Rules (informational)			
<ul style="list-style-type: none"> • Not applicable 			

Field Name	Filler05	Field Number	22
Start Position	228	Field Length	10
Content Rules			
<ul style="list-style-type: none"> • Not applicable 			
Business Rules (compliance required)			
<ul style="list-style-type: none"> • This is a filler field and must be left blank 			
Business Rules (informational)			
<ul style="list-style-type: none"> • Not applicable 			

Field Name	Filler06	Field Number	23
Start Position	238	Field Length	10
Content Rules			
<ul style="list-style-type: none"> Not applicable 			
Business Rules (compliance required)			
<ul style="list-style-type: none"> This is a filler field and must be left blank 			
Business Rules (informational)			
<ul style="list-style-type: none"> Not applicable 			

Field Name	Economic_Status_Id	Field Number	24
Start Position	248	Field Length	10
Content Rules			
<ul style="list-style-type: none"> This field may not be left blank Field may not start with a space. If the value provided contains leading spaces then all leading spaces will be trimmed from the value during further validation of the data value provided Field may only contain whole numbers 			
Business Rules (compliance required)			
<ul style="list-style-type: none"> Field must contain a valid Economic_Status_Id 			
Business Rules (informational)			
<ul style="list-style-type: none"> Not applicable 			

Field Name	Filler07	Field Number	25
Start Position	258	Field Length	10
Content Rules			
<ul style="list-style-type: none"> Not applicable 			
Business Rules (compliance required)			
<ul style="list-style-type: none"> This is a filler field and must be left blank 			
Business Rules (informational)			
<ul style="list-style-type: none"> Not applicable 			

Field Name	SDL_No	Field Number	26
Start Position	268	Field Length	10
Content Rules			
<ul style="list-style-type: none"> This field may be left blank Field may not start with a space. If the value provided contains leading spaces then all leading spaces will be trimmed from the value during further validation of the data value provided Value in field may only contain characters L0123456789 OR N0123456789 			
Business Rules (compliance required)			
<ul style="list-style-type: none"> Value must be provided if Economic_Status_Id has a value of 1 or 3 The combination SDL_No and Site_No must be valid. The combination of SDL_No and Site_No must exist on 200 - Employer 			
Business Rules (informational)			
<ul style="list-style-type: none"> Not applicable 			

Field Name	Filler08	Field Number	27
Start Position	278	Field Length	10
Content Rules			
<ul style="list-style-type: none"> Not applicable 			
Business Rules (compliance required)			
<ul style="list-style-type: none"> This is a filler field and must be left blank 			
Business Rules (informational)			
<ul style="list-style-type: none"> Not applicable 			

Field Name	Filler09	Field Number	28
Start Position	288	Field Length	1
Content Rules			
<ul style="list-style-type: none"> Not applicable 			
Business Rules (compliance required)			
<ul style="list-style-type: none"> This is a filler field and must be left blank 			
Business Rules (informational)			
<ul style="list-style-type: none"> Not applicable 			

Field Name	Filler10	Field Number	29
Start Position	289	Field Length	10
Content Rules			
<ul style="list-style-type: none"> Not applicable 			
Business Rules (compliance required)			
<ul style="list-style-type: none"> This is a filler field and must be left blank 			
Business Rules (informational)			
<ul style="list-style-type: none"> Not applicable 			

Field Name	Filler11	Field Number	30
Start Position	299	Field Length	10
Content Rules			
<ul style="list-style-type: none"> Not applicable 			
Business Rules (compliance required)			
<ul style="list-style-type: none"> This is a filler field and must be left blank 			
Business Rules (informational)			
<ul style="list-style-type: none"> Not applicable 			

Field Name	Site_No	Field Number	31
Start Position	309	Field Length	10
Content Rules			
<ul style="list-style-type: none"> This field may be left blank Field may not start with a space. If the value provided contains leading spaces then all leading spaces will be trimmed from the value during further validation of the data value provided Uppercase value in field may only contain characters ABCDEFGHIJKLMNOPQRSTUVWXYZ1234567890@#&+() \/:_- 			
Business Rules (compliance required)			
<ul style="list-style-type: none"> Not applicable 			
Business Rules (informational)			
<ul style="list-style-type: none"> Not applicable 			

Field Name	Practical_Provider_Code	Field Number	32
Start Position	319	Field Length	20
Content Rules			
<ul style="list-style-type: none"> This field may be left blank Field may not start with a space. If the value provided contains leading spaces then all leading spaces will be trimmed from the value during further validation of the data value provided Uppercase value in field may only contain characters ABCDEFGHIJKLMNOPQRSTUVWXYZ1234567890@#&+() \/:_- 			
Business Rules (compliance required)			
<ul style="list-style-type: none"> The combination Practical_Provider_Code and Practical_Provider_ETQE_Id must be valid . The combination of Practical_Provider_Code and Practical_Provider_ETQE_Id must exist on 101 - Provider as Provider_Code and Provider_ETQE_ID 			
Business Rules (informational)			

Field Name	Practical_Provider_Code	Field Number	32
<ul style="list-style-type: none"> Not applicable 			

Field Name	Practical_Provider_ETQE_Id	Field Number	33
Start Position	339	Field Length	10
Content Rules			
<ul style="list-style-type: none"> This field may be left blank Field may not start with a space. If the value provided contains leading spaces then all leading spaces will be trimmed from the value during further validation of the data value provided Field may only contain whole numbers 			
Business Rules (compliance required)			
<ul style="list-style-type: none"> Field must contain a valid Practical_Provider_ETQE_Id 			
Business Rules (informational)			
<ul style="list-style-type: none"> Not applicable 			

Field Name	Funding_Id	Field Number	34
Start Position	349	Field Length	10
Content Rules			
<ul style="list-style-type: none"> This field may not be left blank Field may not start with a space. If the value provided contains leading spaces then all leading spaces will be trimmed from the value during further validation of the data value provided Field may only contain whole numbers 			
Business Rules (compliance required)			
<ul style="list-style-type: none"> Field must contain a valid Funding_Id Funding_Id value must be 5 if Learnership_Id is not blank and combination of Learnership_Id, National_Id, Person_Alternate_Id, Alternate_Id_Type_Id, Provider_Code and Provider_ETQE_Id exists in file 500 - Learnership Enrolment 			
Business Rules (informational)			
<ul style="list-style-type: none"> Not applicable 			

Field Name	Cumulative_Spend	Field Number	35
Start Position	359	Field Length	10
Content Rules			
<ul style="list-style-type: none"> This field may be left blank Field may not start with a space. If the value provided contains leading spaces then all leading spaces will be trimmed from the value during further validation of the data value provided Field may only contain whole numbers 			
Business Rules (compliance required)			
<ul style="list-style-type: none"> Cumulative_Spend may only have a value if Funding_Id has a value of 1 			
Business Rules (informational)			
<ul style="list-style-type: none"> Not applicable 			

Field Name	OFO_Code	Field Number	36
Start Position	369	Field Length	15
Content Rules			
<ul style="list-style-type: none"> This field may be left blank Field may not start with a space. If the value provided contains leading spaces then all leading spaces will be trimmed from the value during further validation of the data value provided Field may only contain whole numbers 			
Business Rules (compliance required)			
<ul style="list-style-type: none"> Field must contain a valid OFO_Code OFO_Code must be blank if Learnership_Id is not blank and a related record for the learner exists in 500 - Learnership Enrolment 			

Field Name	OFO_Code	Field Number	36
<ul style="list-style-type: none"> OFO_Code may not be blank if Date_Stamp >= 20170701 and Learnership_Id is blank or Learnership_Id is not blank and a related record for learner does not exist in 500 - Learnership Enrolment 			
Business Rules (informational)			
<ul style="list-style-type: none"> Not applicable 			

Field Name	Urban_Rural_ID	Field Number	37
Start Position	384	Field Length	10
Content Rules			
<ul style="list-style-type: none"> This field may not be left blank Field may not start with a space. If the value provided contains leading spaces then all leading spaces will be trimmed from the value during further validation of the data value provided Field may only contain whole numbers 			
Business Rules (compliance required)			
<ul style="list-style-type: none"> Field must contain a valid Urban_Rural_ID 			
Business Rules (informational)			
<ul style="list-style-type: none"> Not applicable 			

Field Name	Learning_Programme_Type_Id	Field Number	38
Start Position	394	Field Length	10
Content Rules			
<ul style="list-style-type: none"> This field may not be left blank Field may not start with a space. If the value provided contains leading spaces then all leading spaces will be trimmed from the value during further validation of the data value provided Field may only contain whole numbers 			
Business Rules (compliance required)			
<ul style="list-style-type: none"> Field must contain a valid Learning_Programme_Type_Id. 			
Business Rules (informational)			
<ul style="list-style-type: none"> Not applicable 			

Field Name	Date_Stamp	Field Number	39
Start Position	404	Field Length	8
Content Rules			
<ul style="list-style-type: none"> This field may not be left blank Field may not start with a space. If the value provided contains leading spaces then all leading spaces will be trimmed from the value during further validation of the data value provided Field may only contain a valid date in the format YYYYMMDD 			
Business Rules (compliance required)			
<ul style="list-style-type: none"> Field may not have a value greater than today's date Year component of field value may not be less than 1900 			
Business Rules (informational)			
<ul style="list-style-type: none"> The system will display the maximum number of records with the same value for this field 			

5.8 Non NQF Intervention Enrolments

File code 502

File naming standard

[Code]_0006_502_v001_YYYYMMDD.dat where:

- [Code] is the submitting ETQE's mnemonic identifier as recorded on the National Learners' Records Database in the format cccc. For example AGRI indicates the Agriculture Sector Education and Training Authority.
- 0006 indicates that the recipient information system to which this data will be submitted is SETMIS.
- v001 indicates that the submission has been extracted in accordance with version 1 of this specification
- YYYYMMDD represents the date on which the data submission was created.
- .dat is the file extension

Description

This file describes all enrolment/achievements for interventions that are not registered on the NQF.

General information:

A count of the number of records found in the file will be recorded in the aggregated report under the General information heading.

The **Date_Stamp** field must reflect the date on which a particular record was last updated. The field will be used by the recipient system to ensure that an older version of a record does not overwrite a more recent version of a record.

Submission requirements: Submission of this file is optional and conditional to the submission of other related files.

File record length: The length of each record must be exactly 274.

File fields

Field Name	National_Id	Field Number	1
Start Position	1	Field Length	15
Content Rules			
<ul style="list-style-type: none"> • This field may be left blank • Field may not start with a space. If the value provided contains leading spaces then all leading spaces will be trimmed from the value during further validation of the data value provided • Uppercase value in field may only contain characters 1234567890 			
Business Rules (compliance required)			
<ul style="list-style-type: none"> • The combination of National_Id, Person_Alternate_Id, Alternate_Id_Type_Id, Non_NQF_Interv_Code, Provider_Code and Provider_ETQE_Id must be unique 			
Business Rules (informational)			
<ul style="list-style-type: none"> • Not applicable 			

Field Name	Person_Alternate_Id	Field Number	2
Start Position	16	Field Length	20
Content Rules			
<ul style="list-style-type: none"> • This field may be left blank • Field may not start with a space. If the value provided contains leading spaces then all leading spaces will be trimmed from the value during further validation of the data value provided 			

Field Name	Person_Alternate_Id	Field Number	2
<ul style="list-style-type: none"> Uppercase value in field may only contain characters ABCDEFGHIJKLMNOPQRSTUVWXYZ-1234567890@_ 			
Business Rules (compliance required)			
<ul style="list-style-type: none"> Not applicable 			
Business Rules (informational)			
<ul style="list-style-type: none"> Not applicable 			

Field Name	Alternate_Id_Type_Id	Field Number	3
Start Position	36	Field Length	3
Content Rules			
<ul style="list-style-type: none"> This field may not be left blank Field may not start with a space. If the value provided contains leading spaces then all leading spaces will be trimmed from the value during further validation of the data value provided Field may only contain whole numbers 			
Business Rules (compliance required)			
<ul style="list-style-type: none"> Field must contain a valid Alternate_Id_Type_Id If Alternate_Id_Type_Id = 537 then the combination of Alternate_Id_Type_Id, Person_Alternate_Id, National_Id, Provider_Code and Provider_ETQE_Id must exist in parent file 400 - Person If Alternate_Id_Type_Id <> 537 then the combination of Alternate_Id_Type_Id, National_Id and Person_Alternate_Id must exist in parent file 400 - Person 			
Business Rules (informational)			
<ul style="list-style-type: none"> Not applicable 			

Field Name	Non_NQF_Interv_Code	Field Number	4
Start Position	39	Field Length	20
Content Rules			
<ul style="list-style-type: none"> This field may not be left blank Field may not start with a space. If the value provided contains leading spaces then all leading spaces will be trimmed from the value during further validation of the data value provided Uppercase value in field may only contain characters ABCDEFGHIJKLMNOPQRSTUVWXYZ1234567890@#&+() \/:._- 			
Business Rules (compliance required)			
<ul style="list-style-type: none"> The combination Non_NQF_Interv_Code and Non_NQF_Interv_ETQE_Id must be valid. The combination of Non_NQF_Interv_Code and Non_NQF_Interv_ETQE_Id must exist on 304 - Non NQF Intervention 			
Business Rules (informational)			
<ul style="list-style-type: none"> Not applicable 			

Field Name	Enrolment_Status_Id	Field Number	5
Start Position	59	Field Length	3
Content Rules			
<ul style="list-style-type: none"> This field may not be left blank Field may not start with a space. If the value provided contains leading spaces then all leading spaces will be trimmed from the value during further validation of the data value provided Field may only contain whole numbers 			
Business Rules (compliance required)			
<ul style="list-style-type: none"> Field must contain a valid Enrolment_Status_Id If Enrolment_Status_Id does not have a value of 10 then Enrolment_Status_Reason_Id must be blank If Enrolment_Status_Id has a value of 10 then Enrolment_Status_Reason_Id must have a value 			
Business Rules (informational)			
<ul style="list-style-type: none"> Not applicable 			

Field Name	Assessor_Registration_Number	Field Number	6
Start Position	62	Field Length	20
Content Rules			
<ul style="list-style-type: none"> This field may be left blank Field may not start with a space. If the value provided contains leading spaces then all leading spaces will be trimmed from the value during further validation of the data value provided Uppercase value in field may only contain characters ABCDEFGHIJKLMNOPQRSTUVWXYZ1234567890@#&+() \/:_- 			
Business Rules (compliance required)			
<ul style="list-style-type: none"> The combination Assessor_Registration_Number and Assessor_ETQE_Id must exist in parent file 401 - Person Designation as Designation_Registration_Number and Designation_ETQE_Id with Designation_id = 1 			
Business Rules (informational)			
<ul style="list-style-type: none"> Not applicable 			

Field Name	Enrolment_Type_Id	Field Number	7
Start Position	82	Field Length	3
Content Rules			
<ul style="list-style-type: none"> This field may not be left blank Field may not start with a space. If the value provided contains leading spaces then all leading spaces will be trimmed from the value during further validation of the data value provided Field may only contain whole numbers 			
Business Rules (compliance required)			
<ul style="list-style-type: none"> Field must contain a valid Enrolment_Type_Id 			
Business Rules (informational)			
<ul style="list-style-type: none"> Not applicable 			

Field Name	Enrolment_Status_Date	Field Number	8
Start Position	85	Field Length	8
Content Rules			
<ul style="list-style-type: none"> This field may not be left blank Field may not start with a space. If the value provided contains leading spaces then all leading spaces will be trimmed from the value during further validation of the data value provided Field may only contain a valid date in the format YYYYMMDD 			
Business Rules (compliance required)			
<ul style="list-style-type: none"> Field may not have a value greater than today's date Year component of field value may not be less than 1900 			
Business Rules (informational)			
<ul style="list-style-type: none"> The system will display the maximum number of records with the same value for this field 			

Field Name	Enrolment_Date	Field Number	9
Start Position	93	Field Length	8
Content Rules			
<ul style="list-style-type: none"> This field may not be left blank Field may not start with a space. If the value provided contains leading spaces then all leading spaces will be trimmed from the value during further validation of the data value provided Field may only contain a valid date in the format YYYYMMDD 			
Business Rules (compliance required)			
<ul style="list-style-type: none"> Enrolment_Date may not be greater than Most_Recent_Registration_Date Enrolment_Date may not be greater than Enrolment_Status_Date Field may not have a value greater than today's date Year component of field value may not be less than 1900 			
Business Rules (informational)			
<ul style="list-style-type: none"> The system will display the maximum number of records with the same value for this field 			

Field Name	Part_Of_Id	Field Number	10
Start Position	101	Field Length	2
Content Rules			
<ul style="list-style-type: none"> • This field may not be left blank • Field may not start with a space. If the value provided contains leading spaces then all leading spaces will be trimmed from the value during further validation of the data value provided • Field may only contain whole numbers 			
Business Rules (compliance required)			
<ul style="list-style-type: none"> • Field must contain a valid Part_Of_Id • Field may only contain values found in 1, 2, 3, 4, 5 			
Business Rules (informational)			
<ul style="list-style-type: none"> • Not applicable 			

Field Name	Qualification_Id	Field Number	11
Start Position	103	Field Length	10
Content Rules			
<ul style="list-style-type: none"> • This field may be left blank • Field may not start with a space. If the value provided contains leading spaces then all leading spaces will be trimmed from the value during further validation of the data value provided • Field may only contain whole numbers 			
Business Rules (compliance required)			
<ul style="list-style-type: none"> • Field must contain a valid Qualification_Id. Must contain a valid SAQA Qualification ID as registered on the National Qualifications Framework (NQF) • Field must have a value if Part_Of_Id = 2 • Field may not have a value if Part_Of_Id <> 2 			
Business Rules (informational)			
<ul style="list-style-type: none"> • Not applicable 			

Field Name	Learnership_Id	Field Number	12
Start Position	113	Field Length	10
Content Rules			
<ul style="list-style-type: none"> • This field may be left blank • Field may not start with a space. If the value provided contains leading spaces then all leading spaces will be trimmed from the value during further validation of the data value provided • Field may only contain whole numbers 			
Business Rules (compliance required)			
<ul style="list-style-type: none"> • Field must contain a valid Learnership_Id • Field must have a value if Part_Of_Id = 3 • Field may not have a value if Part_Of_Id <> 3 			
Business Rules (informational)			
<ul style="list-style-type: none"> • Not applicable 			

Field Name	Provider_Code	Field Number	13
Start Position	123	Field Length	20
Content Rules			
<ul style="list-style-type: none"> • This field may not be left blank • Field may not start with a space. If the value provided contains leading spaces then all leading spaces will be trimmed from the value during further validation of the data value provided • Uppercase value in field may only contain characters ABCDEFGHIJKLMNOPQRSTUVWXYZ1234567890@#&+() \/:_ - 			
Business Rules (compliance required)			
<ul style="list-style-type: none"> • The combination Provider_Code and Provider_ETQE_Id must be valid. The combination of Provider_Code and Provider_ETQE_Id must exist on 101 - Provider 			

Field Name	Provider_Code	Field Number	13
Business Rules (informational)			
<ul style="list-style-type: none"> Not applicable 			

Field Name	Provider_ETQE_Id	Field Number	14
Start Position	143	Field Length	10
Content Rules			
<ul style="list-style-type: none"> This field may not be left blank Field may not start with a space. If the value provided contains leading spaces then all leading spaces will be trimmed from the value during further validation of the data value provided Field may only contain whole numbers 			
Business Rules (compliance required)			
<ul style="list-style-type: none"> Field must contain a valid Provider_ETQE_Id 			
Business Rules (informational)			
<ul style="list-style-type: none"> Not applicable 			

Field Name	Assessor_ETQE_Id	Field Number	15
Start Position	153	Field Length	10
Content Rules			
<ul style="list-style-type: none"> This field may be left blank Field may not start with a space. If the value provided contains leading spaces then all leading spaces will be trimmed from the value during further validation of the data value provided Field may only contain whole numbers 			
Business Rules (compliance required)			
<ul style="list-style-type: none"> Field must contain a valid ETQE_Id 			
Business Rules (informational)			
<ul style="list-style-type: none"> Not applicable 			

Field Name	Enrolment_Status_Reason_Id	Field Number	16
Start Position	163	Field Length	10
Content Rules			
<ul style="list-style-type: none"> This field may be left blank Field may not start with a space. If the value provided contains leading spaces then all leading spaces will be trimmed from the value during further validation of the data value provided Field may only contain whole numbers 			
Business Rules (compliance required)			
<ul style="list-style-type: none"> Field must contain a valid Enrolment_Status_Reason_Id 			
Business Rules (informational)			
<ul style="list-style-type: none"> Not applicable 			

Field Name	Most_Recent_Registration_Date	Field Number	17
Start Position	173	Field Length	8
Content Rules			
<ul style="list-style-type: none"> This field may not be left blank Field may not start with a space. If the value provided contains leading spaces then all leading spaces will be trimmed from the value during further validation of the data value provided Field may only contain a valid date in the format YYYYMMDD 			
Business Rules (compliance required)			
<ul style="list-style-type: none"> Most_Recent_Registration_Date may not be greater than Enrolment_Status_Date Field may not have a value greater than today's date Year component of field value may not be less than 1900 			
Business Rules (informational)			
<ul style="list-style-type: none"> The system will display the maximum number of records with the same value for this field 			

Field Name	Economic_Status_Id	Field Number	18
Start Position	181	Field Length	10
Content Rules			
<ul style="list-style-type: none"> • This field may not be left blank • Field may not start with a space. If the value provided contains leading spaces then all leading spaces will be trimmed from the value during further validation of the data value provided • Field may only contain whole numbers 			
Business Rules (compliance required)			
<ul style="list-style-type: none"> • Field must contain a valid Economic_Status_Id 			
Business Rules (informational)			
<ul style="list-style-type: none"> • Not applicable 			

Field Name	Funding_Id	Field Number	19
Start Position	191	Field Length	10
Content Rules			
<ul style="list-style-type: none"> • This field may not be left blank • Field may not start with a space. If the value provided contains leading spaces then all leading spaces will be trimmed from the value during further validation of the data value provided • Field may only contain whole numbers 			
Business Rules (compliance required)			
<ul style="list-style-type: none"> • Field must contain a valid Funding_Id • Funding_Id may only have a value of 1, 2 or 4 • Funding_Id value must be 5 if Learnership_Id is not blank and combination of Learnership_Id, National_Id, Person_Alternate_Id, Alternate_Id_Type_Id, Provider_Code and Provider_ETQE_Id exists in file 500 - Learnership Enrolment • Funding_Id value must be 5 if Qualification_Id is not blank and combination of Qualification_Id, National_Id, Person_Alternate_Id, Alternate_Id_Type_Id, Provider_Code and Provider_ETQE_Id exists in file 501 - Qualification Enrolment 			
Business Rules (informational)			
<ul style="list-style-type: none"> • Not applicable 			

Field Name	Cumulative_Spend	Field Number	20
Start Position	201	Field Length	10
Content Rules			
<ul style="list-style-type: none"> • This field may be left blank • Field may not start with a space. If the value provided contains leading spaces then all leading spaces will be trimmed from the value during further validation of the data value provided • Field may only contain whole numbers 			
Business Rules (compliance required)			
<ul style="list-style-type: none"> • Cumulative_Spend may only have a value if Funding_Id has a value of 1 			
Business Rules (informational)			
<ul style="list-style-type: none"> • Not applicable 			

Field Name	OFO_Code	Field Number	21
Start Position	211	Field Length	15
Content Rules			
<ul style="list-style-type: none"> • This field may be left blank • Field may not start with a space. If the value provided contains leading spaces then all leading spaces will be trimmed from the value during further validation of the data value provided • Field may only contain whole numbers 			
Business Rules (compliance required)			
<ul style="list-style-type: none"> • Field must contain a valid OFO_Code 			

Field Name	OFO_Code	Field Number	21
<ul style="list-style-type: none"> OFO_Code must be blank if Learnership_Id is not blank and a related record for the learner exists in 500 - Learnership Enrolment Value must be provided if Date_Stamp has a value great than 20170701 and Qualification_Id is blank and Learnership_Id is blank OFO_Code must be blank if Qualification_Id is not blank and a related record for the learner exists in 501 - Qualification Enrolment OFO_Code may not be blank if Date_Stamp >= 20170701 and Learnership_Id is not blank and a related record for learner does not exist in 500 - Learnership Enrolment OFO_Code may not be blank if Date_Stamp >= 20170701 and Qualification_Id is not blank and a related record for learner does not exist in 501 - Qualification Enrolment 			
Business Rules (informational)			
<ul style="list-style-type: none"> Not applicable 			

Field Name	SDL_No	Field Number	22
Start Position	226	Field Length	10
Content Rules			
<ul style="list-style-type: none"> This field may be left blank Field may not start with a space. If the value provided contains leading spaces then all leading spaces will be trimmed from the value during further validation of the data value provided Value in field may only contain characters L0123456789 OR N0123456789 			
Business Rules (compliance required)			
<ul style="list-style-type: none"> Value must be provided if Economic_Status_Id has a value of 1 or 3 The combination SDL_No and Site_No must be valid. The combination of SDL_No and Site_No must exist on 200 - Employer 			
Business Rules (informational)			
<ul style="list-style-type: none"> Not applicable 			

Field Name	Site_No	Field Number	23
Start Position	236	Field Length	10
Content Rules			
<ul style="list-style-type: none"> This field may be left blank Field may not start with a space. If the value provided contains leading spaces then all leading spaces will be trimmed from the value during further validation of the data value provided Uppercase value in field may only contain characters ABCDEFGHIJKLMNOPQRSTUVWXYZ1234567890@#&+() \/:_ - 			
Business Rules (compliance required)			
<ul style="list-style-type: none"> Not applicable 			
Business Rules (informational)			
<ul style="list-style-type: none"> Not applicable 			

Field Name	Non_NQF_Interv_ETQE_Id	Field Number	24
Start Position	246	Field Length	10
Content Rules			
<ul style="list-style-type: none"> This field may not be left blank Field may not start with a space. If the value provided contains leading spaces then all leading spaces will be trimmed from the value during further validation of the data value provided Field may only contain whole numbers 			
Business Rules (compliance required)			
<ul style="list-style-type: none"> Field must contain a valid Non_NQF_Interv_ETQE_Id 			
Business Rules (informational)			
<ul style="list-style-type: none"> Not applicable 			

Field Name	Urban_Rural_ID	Field Number	25
Start Position	256	Field Length	10
Content Rules			
<ul style="list-style-type: none"> • This field may not be left blank • Field may not start with a space. If the value provided contains leading spaces then all leading spaces will be trimmed from the value during further validation of the data value provided • Field may only contain whole numbers 			
Business Rules (compliance required)			
<ul style="list-style-type: none"> • Field must contain a valid Urban_Rural_ID 			
Business Rules (informational)			
<ul style="list-style-type: none"> • Not applicable 			

Field Name	Date_Stamp	Field Number	26
Start Position	266	Field Length	8
Content Rules			
<ul style="list-style-type: none"> • This field may not be left blank • Field may not start with a space. If the value provided contains leading spaces then all leading spaces will be trimmed from the value during further validation of the data value provided • Field may only contain a valid date in the format YYYYMMDD 			
Business Rules (compliance required)			
<ul style="list-style-type: none"> • Field may not have a value greater than today's date • Year component of field value may not be less than 1900 			
Business Rules (informational)			
<ul style="list-style-type: none"> • The system will display the maximum number of records with the same value for this field 			

5.9 Unit Standard Enrolment

File code 503

File naming standard

[Code]_0006_503_v001_YYYYMMDD.dat where:

- [Code] is the submitting ETQE's mnemonic identifier as recorded on the National Learners' Records Database in the format cccc. For example AGRI indicates the Agriculture Sector Education and Training Authority.
- 0006 indicates that the recipient information system to which this data will be submitted is SETMIS.
- v001 indicates that the submission has been extracted in accordance with version 1 of this specification
- YYYYMMDD represents the date on which the data submission was created.
- .dat is the file extension

Description

This file describes all unit standard enrolment/achievements.

This file is a modified version of the National Learners' Records Database (NLRD) File Number 30

General information:

A count of the number of records found in the file will be recorded in the aggregated report under the General information heading.

The **Date_Stamp** field must reflect the date on which a particular record was last updated. The field will be used by the recipient system to ensure that an older version of a record does not overwrite a more recent version of a record.

Submission requirements: Submission of this file is mandatory.

File record length: The length of each record must be exactly 408.

File fields

Field Name	National_Id	Field Number	1
Start Position	1	Field Length	15
Content Rules			
<ul style="list-style-type: none"> • This field may be left blank • Field may not start with a space. If the value provided contains leading spaces then all leading spaces will be trimmed from the value during further validation of the data value provided • Uppercase value in field may only contain characters 1234567890 			
Business Rules (compliance required)			
<ul style="list-style-type: none"> • The combination of National_Id, Person_Alternate_Id, Alternate_Id_Type_Id, Unit_Standard_Id, Provider_Code, Provider_ETQE_Id, Non_NQF_Interv_Code and Non_NQF_Interv_ETQE_Id must be unique 			
Business Rules (informational)			
<ul style="list-style-type: none"> • Not applicable 			

Field Name	Person_Alternate_Id	Field Number	2
Start Position	16	Field Length	20
Content Rules			
<ul style="list-style-type: none"> • This field may be left blank • Field may not start with a space. If the value provided contains leading spaces then all leading spaces will be trimmed from the value during further validation of the data value provided 			

Field Name	Person_Alternate_Id	Field Number	2
<ul style="list-style-type: none"> Uppercase value in field may only contain characters ABCDEFGHIJKLMNOPQRSTUVWXYZ-1234567890@_ 			
Business Rules (compliance required)			
<ul style="list-style-type: none"> Not applicable 			
Business Rules (informational)			
<ul style="list-style-type: none"> Not applicable 			

Field Name	Alternate_Id_Type_Id	Field Number	3
Start Position	36	Field Length	3
Content Rules			
<ul style="list-style-type: none"> This field may not be left blank Field may not start with a space. If the value provided contains leading spaces then all leading spaces will be trimmed from the value during further validation of the data value provided Field may only contain whole numbers 			
Business Rules (compliance required)			
<ul style="list-style-type: none"> Field must contain a valid Alternate_Id_Type_Id If Alternate_Id_Type_Id = 537 then the combination of Alternate_Id_Type_Id, Person_Alternate_Id, National_Id, Provider_Code and Provider_ETQE_Id must exist in parent file 400 - Person If Alternate_Id_Type_Id <> 537 then the combination of Alternate_Id_Type_Id, National_Id and Person_Alternate_Id must exist in parent file 400 - Person 			
Business Rules (informational)			
<ul style="list-style-type: none"> Not applicable 			

Field Name	Unit_Standard_Id	Field Number	4
Start Position	39	Field Length	10
Content Rules			
<ul style="list-style-type: none"> This field may not be left blank Field may not start with a space. If the value provided contains leading spaces then all leading spaces will be trimmed from the value during further validation of the data value provided Field may only contain whole numbers 			
Business Rules (compliance required)			
<ul style="list-style-type: none"> Field must contain a valid Unit_Standard_Id. Must contain a valid SAQA Unit Standard ID as registered on the National Qualifications Framework (NQF) 			
Business Rules (informational)			
<ul style="list-style-type: none"> Not applicable 			

Field Name	Enrolment_Status_Id	Field Number	5
Start Position	49	Field Length	3
Content Rules			
<ul style="list-style-type: none"> This field may not be left blank Field may not start with a space. If the value provided contains leading spaces then all leading spaces will be trimmed from the value during further validation of the data value provided Field may only contain whole numbers 			
Business Rules (compliance required)			
<ul style="list-style-type: none"> Field must contain a valid Enrolment_Status_Id If Enrolment_Status_Id does not have a value of 10 then Enrolment_Status_Reason_Id must be blank If Enrolment_Status_Id has a value of 10 then Enrolment_Status_Reason_Id must have a value If Enrolment_Status_Id = 15 then a value for Certificate_Number must be provided If Enrolment_Status_Id does not have a value 15 then Certificate_Number must be blank 			
Business Rules (informational)			
<ul style="list-style-type: none"> Not applicable 			

Field Name	Assessor_Registration_Number	Field Number	6
Start Position	52	Field Length	20
Content Rules			
<ul style="list-style-type: none"> This field may be left blank Field may not start with a space. If the value provided contains leading spaces then all leading spaces will be trimmed from the value during further validation of the data value provided Uppercase value in field may only contain characters ABCDEFGHIJKLMNOPQRSTUVWXYZ1234567890@#&+() \/:._- 			
Business Rules (compliance required)			
<ul style="list-style-type: none"> The combination Assessor_Registration_Number and Assessor_ETQE_Id must exist in parent file 401 - Person Designation as Designation_Registration_Number and Designation_ETQE_Id with Designation_id = 1 			
Business Rules (informational)			
<ul style="list-style-type: none"> Not applicable 			

Field Name	Enrolment_Type_Id	Field Number	7
Start Position	72	Field Length	3
Content Rules			
<ul style="list-style-type: none"> This field may not be left blank Field may not start with a space. If the value provided contains leading spaces then all leading spaces will be trimmed from the value during further validation of the data value provided Field may only contain whole numbers 			
Business Rules (compliance required)			
<ul style="list-style-type: none"> Field must contain a valid Enrolment_Type_Id 			
Business Rules (informational)			
<ul style="list-style-type: none"> Not applicable 			

Field Name	Enrolment_Status_Date	Field Number	8
Start Position	75	Field Length	8
Content Rules			
<ul style="list-style-type: none"> This field may not be left blank Field may not start with a space. If the value provided contains leading spaces then all leading spaces will be trimmed from the value during further validation of the data value provided Field may only contain a valid date in the format YYYYMMDD 			
Business Rules (compliance required)			
<ul style="list-style-type: none"> Field may not have a value greater than today's date Year component of field value may not be less than 1900 			
Business Rules (informational)			
<ul style="list-style-type: none"> The system will display the maximum number of records with the same value for this field 			

Field Name	Enrolment_Date	Field Number	9
Start Position	83	Field Length	8
Content Rules			
<ul style="list-style-type: none"> This field may not be left blank Field may not start with a space. If the value provided contains leading spaces then all leading spaces will be trimmed from the value during further validation of the data value provided Field may only contain a valid date in the format YYYYMMDD 			
Business Rules (compliance required)			
<ul style="list-style-type: none"> Enrolment_Date may not be greater than Most_Recent_Registration_Date Enrolment_Date may not be greater than Enrolment_Status_Date Field may not have a value greater than today's date Year component of field value may not be less than 1900 			
Business Rules (informational)			
<ul style="list-style-type: none"> The system will display the maximum number of records with the same value for this field 			

Field Name	Filler01	Field Number	10
Start Position	91	Field Length	3
Content Rules			
<ul style="list-style-type: none"> Not applicable 			
Business Rules (compliance required)			
<ul style="list-style-type: none"> This is a filler field and must be left blank 			
Business Rules (informational)			
<ul style="list-style-type: none"> Not applicable 			

Field Name	Part_Of_Id	Field Number	11
Start Position	94	Field Length	2
Content Rules			
<ul style="list-style-type: none"> This field may not be left blank Field may not start with a space. If the value provided contains leading spaces then all leading spaces will be trimmed from the value during further validation of the data value provided Field may only contain whole numbers 			
Business Rules (compliance required)			
<ul style="list-style-type: none"> Field must contain a valid Part_Of_Id Field may only contain values found in 1, 2, 3, 4, 5 			
Business Rules (informational)			
<ul style="list-style-type: none"> Not applicable 			

Field Name	Qualification_Id	Field Number	12
Start Position	96	Field Length	10
Content Rules			
<ul style="list-style-type: none"> This field may be left blank Field may not start with a space. If the value provided contains leading spaces then all leading spaces will be trimmed from the value during further validation of the data value provided Field may only contain whole numbers 			
Business Rules (compliance required)			
<ul style="list-style-type: none"> Field must contain a valid Qualification_Id. Must contain a valid SAQA Qualification ID as registered on the National Qualifications Framework (NQF) Field must have a value if Part_Of_Id = 2 Field may not have a value if Part_Of_Id <> 2 			
Business Rules (informational)			
<ul style="list-style-type: none"> Not applicable 			

Field Name	Learnership_Id	Field Number	13
Start Position	106	Field Length	10
Content Rules			
<ul style="list-style-type: none"> This field may be left blank Field may not start with a space. If the value provided contains leading spaces then all leading spaces will be trimmed from the value during further validation of the data value provided Field may only contain whole numbers 			
Business Rules (compliance required)			
<ul style="list-style-type: none"> Field must contain a valid Learnership_Id Field must have a value if Part_Of_Id = 3 Field may not have a value if Part_Of_Id <> 3 			
Business Rules (informational)			
<ul style="list-style-type: none"> Not applicable 			

Field Name	Provider_Code	Field Number	14
Start Position	116	Field Length	20
Content Rules			
<ul style="list-style-type: none"> This field may not be left blank Field may not start with a space. If the value provided contains leading spaces then all leading spaces will be trimmed from the value during further validation of the data value provided Uppercase value in field may only contain characters ABCDEFGHIJKLMNOPQRSTUVWXYZ1234567890@#&+() \/:._- 			
Business Rules (compliance required)			
<ul style="list-style-type: none"> The combination Provider_Code and Provider_ETQE_Id must be valid. The combination of Provider_Code and Provider_ETQE_Id must exist on 101 - Provider 			
Business Rules (informational)			
<ul style="list-style-type: none"> Not applicable 			

Field Name	Provider_ETQE_Id	Field Number	15
Start Position	136	Field Length	10
Content Rules			
<ul style="list-style-type: none"> This field may not be left blank Field may not start with a space. If the value provided contains leading spaces then all leading spaces will be trimmed from the value during further validation of the data value provided Field may only contain whole numbers 			
Business Rules (compliance required)			
<ul style="list-style-type: none"> Field must contain a valid Provider_ETQE_Id 			
Business Rules (informational)			
<ul style="list-style-type: none"> Not applicable 			

Field Name	Assessor_ETQE_Id	Field Number	16
Start Position	146	Field Length	10
Content Rules			
<ul style="list-style-type: none"> This field may be left blank Field may not start with a space. If the value provided contains leading spaces then all leading spaces will be trimmed from the value during further validation of the data value provided Field may only contain whole numbers 			
Business Rules (compliance required)			
<ul style="list-style-type: none"> Field must contain a valid ETQE_Id 			
Business Rules (informational)			
<ul style="list-style-type: none"> Not applicable 			

Field Name	Filler02	Field Number	17
Start Position	156	Field Length	20
Content Rules			
<ul style="list-style-type: none"> Not applicable 			
Business Rules (compliance required)			
<ul style="list-style-type: none"> This is a filler field and must be left blank 			
Business Rules (informational)			
<ul style="list-style-type: none"> Not applicable 			

Field Name	Filler03	Field Number	18
Start Position	176	Field Length	20
Content Rules			
<ul style="list-style-type: none"> Not applicable 			
Business Rules (compliance required)			
<ul style="list-style-type: none"> This is a filler field and must be left blank 			

Field Name	Filler03	Field Number	18
Business Rules (informational)			
<ul style="list-style-type: none"> Not applicable 			

Field Name	Enrolment_Status_Reason_Id	Field Number	19
Start Position	196	Field Length	10
Content Rules			
<ul style="list-style-type: none"> This field may be left blank Field may not start with a space. If the value provided contains leading spaces then all leading spaces will be trimmed from the value during further validation of the data value provided Field may only contain whole numbers 			
Business Rules (compliance required)			
<ul style="list-style-type: none"> Field must contain a valid Enrolment_Status_Reason_Id 			
Business Rules (informational)			
<ul style="list-style-type: none"> Not applicable 			

Field Name	Most_Recent_Registration_Date	Field Number	20
Start Position	206	Field Length	8
Content Rules			
<ul style="list-style-type: none"> This field may not be left blank Field may not start with a space. If the value provided contains leading spaces then all leading spaces will be trimmed from the value during further validation of the data value provided Field may only contain a valid date in the format YYYYMMDD 			
Business Rules (compliance required)			
<ul style="list-style-type: none"> Most_Recent_Registration_Date may not be greater than Enrolment_Status_Date Field may not have a value greater than today's date Year component of field value may not be less than 1900 			
Business Rules (informational)			
<ul style="list-style-type: none"> The system will display the maximum number of records with the same value for this field 			

Field Name	Filler04	Field Number	21
Start Position	214	Field Length	10
Content Rules			
<ul style="list-style-type: none"> Not applicable 			
Business Rules (compliance required)			
<ul style="list-style-type: none"> This is a filler field and must be left blank 			
Business Rules (informational)			
<ul style="list-style-type: none"> Not applicable 			

Field Name	Filler05	Field Number	22
Start Position	224	Field Length	10
Content Rules			
<ul style="list-style-type: none"> Not applicable 			
Business Rules (compliance required)			
<ul style="list-style-type: none"> This is a filler field and must be left blank 			
Business Rules (informational)			
<ul style="list-style-type: none"> Not applicable 			

Field Name	Filler06	Field Number	23
Start Position	234	Field Length	10
Content Rules			
<ul style="list-style-type: none"> Not applicable 			
Business Rules (compliance required)			

Field Name	Filler06	Field Number	23
<ul style="list-style-type: none"> This is a filler field and must be left blank 			
Business Rules (informational)			
<ul style="list-style-type: none"> Not applicable 			

Field Name	Economic_Status_Id	Field Number	24
Start Position	244	Field Length	10
Content Rules			
<ul style="list-style-type: none"> This field may not be left blank Field may not start with a space. If the value provided contains leading spaces then all leading spaces will be trimmed from the value during further validation of the data value provided Field may only contain whole numbers 			
Business Rules (compliance required)			
<ul style="list-style-type: none"> Field must contain a valid Economic_Status_Id 			
Business Rules (informational)			
<ul style="list-style-type: none"> Not applicable 			

Field Name	Filler07	Field Number	25
Start Position	254	Field Length	10
Content Rules			
<ul style="list-style-type: none"> Not applicable 			
Business Rules (compliance required)			
<ul style="list-style-type: none"> This is a filler field and must be left blank 			
Business Rules (informational)			
<ul style="list-style-type: none"> Not applicable 			

Field Name	Filler08	Field Number	26
Start Position	264	Field Length	1
Content Rules			
<ul style="list-style-type: none"> Not applicable 			
Business Rules (compliance required)			
<ul style="list-style-type: none"> This is a filler field and must be left blank 			
Business Rules (informational)			
<ul style="list-style-type: none"> Not applicable 			

Field Name	Filler09	Field Number	27
Start Position	265	Field Length	10
Content Rules			
<ul style="list-style-type: none"> Not applicable 			
Business Rules (compliance required)			
<ul style="list-style-type: none"> This is a filler field and must be left blank 			
Business Rules (informational)			
<ul style="list-style-type: none"> Not applicable 			

Field Name	Cumulative_Spend	Field Number	28
Start Position	275	Field Length	10
Content Rules			
<ul style="list-style-type: none"> This field may be left blank Field may not start with a space. If the value provided contains leading spaces then all leading spaces will be trimmed from the value during further validation of the data value provided Field may only contain whole numbers 			
Business Rules (compliance required)			
<ul style="list-style-type: none"> Cumulative_Spend may only have a value if Funding_Id has a value of 1 			

Field Name	Cumulative_Spend	Field Number	28
Business Rules (informational)			
<ul style="list-style-type: none"> Not applicable 			

Field Name	Certificate_Number	Field Number	29
Start Position	285	Field Length	30
Content Rules			
<ul style="list-style-type: none"> This field may be left blank Field may not start with a space. If the value provided contains leading spaces then all leading spaces will be trimmed from the value during further validation of the data value provided Uppercase value in field may only contain characters ABCDEFGHIJKLMNOPQRSTUVWXYZ1234567890@#&+() \/:._- 			
Business Rules (compliance required)			
<ul style="list-style-type: none"> Not applicable 			
Business Rules (informational)			
<ul style="list-style-type: none"> Not applicable 			

Field Name	Funding_Id	Field Number	30
Start Position	315	Field Length	10
Content Rules			
<ul style="list-style-type: none"> This field may not be left blank Field may not start with a space. If the value provided contains leading spaces then all leading spaces will be trimmed from the value during further validation of the data value provided Field may only contain whole numbers 			
Business Rules (compliance required)			
<ul style="list-style-type: none"> Funding_Id value must be 5 if Qualification_Id is not blank and combination of Qualification_Id, National_Id, Person_Alternate_Id, Alternate_Id_Type_Id, Provider_Code and Provider_ETQE_Id exists in file 501 - Qualification Enrolment Funding_Id value must be 5 if Learnership_Id is not blank and combination of Learnership_Id, National_Id, Person_Alternate_Id, Alternate_Id_Type_Id, Provider_Code and Provider_ETQE_Id exists in file 500 - Learnership Enrolment 			
Business Rules (informational)			
<ul style="list-style-type: none"> Not applicable 			

Field Name	OFO_Code	Field Number	31
Start Position	325	Field Length	15
Content Rules			
<ul style="list-style-type: none"> This field may be left blank Field may not start with a space. If the value provided contains leading spaces then all leading spaces will be trimmed from the value during further validation of the data value provided Field may only contain whole numbers 			
Business Rules (compliance required)			
<ul style="list-style-type: none"> Field must contain a valid OFO_Code OFO_Code must be blank if Learnership_Id is not blank and a related record for the learner exists in 500 - Learnership Enrolment OFO_Code must be blank if Qualification_Id is not blank and a related record for the learner exists in 501 - Qualification Enrolment OFO_Code may not be blank if Date_Stamp >= 20170701 and Learnership_Id is not blank and a related record for learner does not exist in 500 - Learnership Enrolment OFO_Code may not be blank if Date_Stamp >= 20170701 and Qualification_Id is not blank and a related record for learner does not exist in 501 - Qualification Enrolment Value must be provided if Date_Stamp has a value great than 20170701 and Qualification_Id is blank and Learnership_Id is blank and Non_NQF_Interv_Code is blank 			

Field Name	OFO_Code	Field Number	31
<ul style="list-style-type: none"> OFO_Code must be blank if Non_NQF_Interv_Code is not blank and a related record for the learner exists in 502 - Non NQF Intervention Enrolments OFO_Code may not be blank if Date_Stamp >= 20170701 and Non_NQF_Interv_Code is not blank and a related record for learner does not exist in 502 - Non NQF Intervention Enrolments 			
Business Rules (informational)			
<ul style="list-style-type: none"> Not applicable 			

Field Name	SDL_No	Field Number	32
Start Position	340	Field Length	10
Content Rules			
<ul style="list-style-type: none"> This field may be left blank Field may not start with a space. If the value provided contains leading spaces then all leading spaces will be trimmed from the value during further validation of the data value provided Value in field may only contain characters L0123456789 OR N0123456789 			
Business Rules (compliance required)			
<ul style="list-style-type: none"> Value must be provided if Economic_Status_Id has a value of 1 or 3 The combination SDL_No and Site_No must be valid. The combination of SDL_No and Site_No must exist on 200 - Employer 			
Business Rules (informational)			
<ul style="list-style-type: none"> Not applicable 			

Field Name	Site_No	Field Number	33
Start Position	350	Field Length	10
Content Rules			
<ul style="list-style-type: none"> This field may be left blank Field may not start with a space. If the value provided contains leading spaces then all leading spaces will be trimmed from the value during further validation of the data value provided Uppercase value in field may only contain characters ABCDEFGHIJKLMNOPQRSTUVWXYZ1234567890@#&+() \/:.-_ 			
Business Rules (compliance required)			
<ul style="list-style-type: none"> Not applicable 			
Business Rules (informational)			
<ul style="list-style-type: none"> Not applicable 			

Field Name	Non_NQF_Interv_Code	Field Number	34
Start Position	360	Field Length	20
Content Rules			
<ul style="list-style-type: none"> This field may be left blank Field may not start with a space. If the value provided contains leading spaces then all leading spaces will be trimmed from the value during further validation of the data value provided Uppercase value in field may only contain characters ABCDEFGHIJKLMNOPQRSTUVWXYZ1234567890@#&+() \/:.-_ 			
Business Rules (compliance required)			
<ul style="list-style-type: none"> Field may not have a value if Part_Of_Id <> 5 The combination Non_NQF_Interv_Code and Non_NQF_Interv_ETQE_Id must be valid. The combination of Non_NQF_Interv_Code and Non_NQF_Interv_ETQE_Id must exist on 304 - Non NQF Intervention 			
Business Rules (informational)			
<ul style="list-style-type: none"> Not applicable 			

Field Name	Non_NQF_Interv_ETQE_Id	Field Number	35
Start Position	380	Field Length	10
Content Rules			

Field Name	Non_NQF_Interv_ETQE_Id	Field Number	35
<ul style="list-style-type: none"> This field may be left blank Field may not start with a space. If the value provided contains leading spaces then all leading spaces will be trimmed from the value during further validation of the data value provided Field may only contain whole numbers 			
Business Rules (compliance required)			
<ul style="list-style-type: none"> Not applicable 			
Business Rules (informational)			
<ul style="list-style-type: none"> Not applicable 			

Field Name	Urban_Rural_ID	Field Number	36
Start Position	390	Field Length	10
Content Rules			
<ul style="list-style-type: none"> This field may not be left blank Field may not start with a space. If the value provided contains leading spaces then all leading spaces will be trimmed from the value during further validation of the data value provided Field may only contain whole numbers 			
Business Rules (compliance required)			
<ul style="list-style-type: none"> Field must contain a valid Urban_Rural_ID 			
Business Rules (informational)			
<ul style="list-style-type: none"> Not applicable 			

Field Name	Date_Stamp	Field Number	37
Start Position	400	Field Length	8
Content Rules			
<ul style="list-style-type: none"> This field may not be left blank Field may not start with a space. If the value provided contains leading spaces then all leading spaces will be trimmed from the value during further validation of the data value provided Field may only contain a valid date in the format YYYYMMDD 			
Business Rules (compliance required)			
<ul style="list-style-type: none"> Field may not have a value greater than today's date Year component of field value may not be less than 1900 			
Business Rules (informational)			
<ul style="list-style-type: none"> The system will display the maximum number of records with the same value for this field 			

5.10 Trade Test

File code 505

File naming standard

[Code]_0006_505_v001_YYYYMMDD.dat where:

- [Code] is the submitting ETQE's mnemonic identifier as recorded on the National Learners' Records Database in the format cccc. For example AGRI indicates the Agriculture Sector Education and Training Authority.
- 0006 indicates that the recipient information system to which this data will be submitted is SETMIS.
- v001 indicates that the submission has been extracted in accordance with version 1 of this specification
- YYYYMMDD represents the date on which the data submission was created.
- .dat is the file extension

Description

This file describes all trade tests that have been conducted.

General information:

A count of the number of records found in the file will be recorded in the aggregated report under the General information heading.

The **Date_Stamp** field must reflect the date on which a particular record was last updated. The field will be used by the recipient system to ensure that an older version of a record does not overwrite a more recent version of a record.

Submission requirements: Submission of this file is optional and conditional to the submission of other related files.

File record length: The length of each record must be exactly 207.

File fields

Field Name	National_Id	Field Number	1
Start Position	1	Field Length	15
Content Rules			
<ul style="list-style-type: none"> • This field may be left blank • Field may not start with a space. If the value provided contains leading spaces then all leading spaces will be trimmed from the value during further validation of the data value provided • Uppercase value in field may only contain characters 1234567890 			
Business Rules (compliance required)			
<ul style="list-style-type: none"> • The combination of National_Id, Person_Alternate_Id, Alternate_Id_Type_Id, Qualification_Id, Provider_Code, Provider_ETQE_Id and Trade_Test_Number must be unique • The combination of National_Id, Person_Alternate_Id, Alternate_Id_Type_Id, Qualification_Id, Provider_Code and Provider_ETQE_Id must exist in parent file 501 - Qualification Enrolment 			
Business Rules (informational)			
<ul style="list-style-type: none"> • Not applicable 			

Field Name	Person_Alternate_Id	Field Number	2
Start Position	16	Field Length	20
Content Rules			
<ul style="list-style-type: none"> • This field may be left blank 			

Field Name	Person_Alternate_Id	Field Number	2
<ul style="list-style-type: none"> Field may not start with a space. If the value provided contains leading spaces then all leading spaces will be trimmed from the value during further validation of the data value provided Uppercase value in field may only contain characters ABCDEFGHIJKLMNOPQRSTUVWXYZ-1234567890@_ 			
Business Rules (compliance required)			
<ul style="list-style-type: none"> Not applicable 			
Business Rules (informational)			
<ul style="list-style-type: none"> Not applicable 			

Field Name	Alternate_Id_Type_Id	Field Number	3
Start Position	36	Field Length	3
Content Rules			
<ul style="list-style-type: none"> This field may not be left blank Field may not start with a space. If the value provided contains leading spaces then all leading spaces will be trimmed from the value during further validation of the data value provided Field may only contain whole numbers 			
Business Rules (compliance required)			
<ul style="list-style-type: none"> Field must contain a valid Alternate_Id_Type_Id If Alternate_Id_Type_Id = 537 then the combination of Alternate_Id_Type_Id, Person_Alternate_Id, National_Id, Provider_Code and Provider_ETQE_Id must exist in parent file 400 - Person If Alternate_Id_Type_Id <> 537 then the combination of Alternate_Id_Type_Id, National_Id and Person_Alternate_Id must exist in parent file 400 - Person 			
Business Rules (informational)			
<ul style="list-style-type: none"> Not applicable 			

Field Name	Qualification_Id	Field Number	4
Start Position	39	Field Length	10
Content Rules			
<ul style="list-style-type: none"> This field may not be left blank Field may not start with a space. If the value provided contains leading spaces then all leading spaces will be trimmed from the value during further validation of the data value provided Field may only contain whole numbers 			
Business Rules (compliance required)			
<ul style="list-style-type: none"> Field must contain a valid Qualification_Id for a trade qualification 			
Business Rules (informational)			
<ul style="list-style-type: none"> Not applicable 			

Field Name	Trade_Test_Number	Field Number	5
Start Position	49	Field Length	2
Content Rules			
<ul style="list-style-type: none"> This field may not be left blank Field may not start with a space. If the value provided contains leading spaces then all leading spaces will be trimmed from the value during further validation of the data value provided Field may only contain whole numbers 			
Business Rules (compliance required)			
<ul style="list-style-type: none"> Not applicable 			
Business Rules (informational)			
<ul style="list-style-type: none"> Not applicable 			

Field Name	Trade_Test_Result_Id	Field Number	6
Start Position	51	Field Length	10
Content Rules			
<ul style="list-style-type: none"> This field may not be left blank 			

Field Name	Trade_Test_Result_Id	Field Number	6
<ul style="list-style-type: none"> Field may not start with a space. If the value provided contains leading spaces then all leading spaces will be trimmed from the value during further validation of the data value provided Field may only contain whole numbers 			
Business Rules (compliance required)			
<ul style="list-style-type: none"> Field must contain a valid Trade_Test_Result_Id If Trade_Test_Result_Id has a value of 2 then Trade_Test_Result_Reason_Id may not be blank If Trade_Test_Result_Id does not have a value of 2 then Trade_Test_Result_Reason_Id must be blank 			
Business Rules (informational)			
<ul style="list-style-type: none"> Not applicable 			

Field Name	Trade_Test_Provider_Code	Field Number	7
Start Position	61	Field Length	20
Content Rules			
<ul style="list-style-type: none"> This field may not be left blank Field may not start with a space. If the value provided contains leading spaces then all leading spaces will be trimmed from the value during further validation of the data value provided Uppercase value in field may only contain characters ABCDEFGHIJKLMNOPQRSTUVWXYZ1234567890@#&+() \/:_- 			
Business Rules (compliance required)			
<ul style="list-style-type: none"> The combination Trade_Test_Provider_Code and Trade_Test_Provider_ETQE_Id must be valid . The combination of Trade_Test_Provider_Code and Trade_Test_Provider_ETQE_Id must exist on 101 - Provider as Provider_Code and Provider_ETQE_ID 			
Business Rules (informational)			
<ul style="list-style-type: none"> Not applicable 			

Field Name	Assessor_Registration_Number	Field Number	8
Start Position	81	Field Length	20
Content Rules			
<ul style="list-style-type: none"> This field may be left blank Field may not start with a space. If the value provided contains leading spaces then all leading spaces will be trimmed from the value during further validation of the data value provided Uppercase value in field may only contain characters ABCDEFGHIJKLMNOPQRSTUVWXYZ1234567890@#&+() \/:_- 			
Business Rules (compliance required)			
<ul style="list-style-type: none"> The combination Assessor_Registration_Number and Assessor_ETQE_Id must exist in parent file 401 - Person Designation as Designation_Registration_Number and Designation_ETQE_Id with Designation_id = 1 			
Business Rules (informational)			
<ul style="list-style-type: none"> Not applicable 			

Field Name	Moderator_Registration_Number	Field Number	9
Start Position	101	Field Length	20
Content Rules			
<ul style="list-style-type: none"> This field may be left blank Field may not start with a space. If the value provided contains leading spaces then all leading spaces will be trimmed from the value during further validation of the data value provided Uppercase value in field may only contain characters ABCDEFGHIJKLMNOPQRSTUVWXYZ1234567890@#&+() \/:_- 			
Business Rules (compliance required)			
<ul style="list-style-type: none"> The combination Moderator_Registration_Number and Moderator_ETQE_Id must exist in parent file 401 - Person Designation as Designation_Registration_Number and Designation_ETQE_Id with Designation_id = 1 			

Field Name	Moderator_Registration_Number	Field Number	9
Business Rules (informational)			
<ul style="list-style-type: none"> Not applicable 			

Field Name	Trade_Test_Date	Field Number	10
Start Position	121	Field Length	8
Content Rules			
<ul style="list-style-type: none"> This field may not be left blank Field may not start with a space. If the value provided contains leading spaces then all leading spaces will be trimmed from the value during further validation of the data value provided Field may only contain a valid date in the format YYYYMMDD 			
Business Rules (compliance required)			
<ul style="list-style-type: none"> Field may not have a value greater than today's date Year component of field value may not be less than 1900 			
Business Rules (informational)			
<ul style="list-style-type: none"> The system will display the maximum number of records with the same value for this field 			

Field Name	Trade_Test_Result_Reason_Id	Field Number	11
Start Position	129	Field Length	10
Content Rules			
<ul style="list-style-type: none"> This field may be left blank Field may not start with a space. If the value provided contains leading spaces then all leading spaces will be trimmed from the value during further validation of the data value provided Field may only contain whole numbers 			
Business Rules (compliance required)			
<ul style="list-style-type: none"> Field must contain a valid Trade_Test_Result_Reason_Id 			
Business Rules (informational)			
<ul style="list-style-type: none"> Not applicable 			

Field Name	Provider_Code	Field Number	12
Start Position	139	Field Length	20
Content Rules			
<ul style="list-style-type: none"> This field may be left blank Field may not start with a space. If the value provided contains leading spaces then all leading spaces will be trimmed from the value during further validation of the data value provided Uppercase value in field may only contain characters ABCDEFGHIJKLMNOPQRSTUVWXYZ1234567890@#&+() \/:_- 			
Business Rules (compliance required)			
<ul style="list-style-type: none"> The combination Provider_Code and Provider_ETQE_Id must be valid. The combination of Provider_Code and Provider_ETQE_Id must exist on 101 - Provider 			
Business Rules (informational)			
<ul style="list-style-type: none"> Not applicable 			

Field Name	Provider_ETQE_Id	Field Number	13
Start Position	159	Field Length	10
Content Rules			
<ul style="list-style-type: none"> This field may be left blank Field may not start with a space. If the value provided contains leading spaces then all leading spaces will be trimmed from the value during further validation of the data value provided Field may only contain whole numbers 			
Business Rules (compliance required)			
<ul style="list-style-type: none"> Field must contain a valid Provider_ETQE_Id 			
Business Rules (informational)			

Field Name	Provider_ETQE_Id	Field Number	13
<ul style="list-style-type: none"> Not applicable 			

Field Name	Trade_Test_Provider_ETQE_Id	Field Number	14
Start Position	169	Field Length	10
Content Rules			
<ul style="list-style-type: none"> This field may not be left blank Field may not start with a space. If the value provided contains leading spaces then all leading spaces will be trimmed from the value during further validation of the data value provided Field may only contain whole numbers 			
Business Rules (compliance required)			
<ul style="list-style-type: none"> Field must contain a valid Trade_Test_Provider_ETQE_Id 			
Business Rules (informational)			
<ul style="list-style-type: none"> Not applicable 			

Field Name	Assessor_ETQE_Id	Field Number	15
Start Position	179	Field Length	10
Content Rules			
<ul style="list-style-type: none"> This field may be left blank Field may not start with a space. If the value provided contains leading spaces then all leading spaces will be trimmed from the value during further validation of the data value provided Field may only contain whole numbers 			
Business Rules (compliance required)			
<ul style="list-style-type: none"> Field must contain a valid ETQE_Id 			
Business Rules (informational)			
<ul style="list-style-type: none"> Not applicable 			

Field Name	Moderator_ETQE_Id	Field Number	16
Start Position	189	Field Length	10
Content Rules			
<ul style="list-style-type: none"> This field may be left blank Field may not start with a space. If the value provided contains leading spaces then all leading spaces will be trimmed from the value during further validation of the data value provided Field may only contain whole numbers 			
Business Rules (compliance required)			
<ul style="list-style-type: none"> Field must contain a valid Moderator_ETQE_Id 			
Business Rules (informational)			
<ul style="list-style-type: none"> Not applicable 			

Field Name	Date_Stamp	Field Number	17
Start Position	199	Field Length	8
Content Rules			
<ul style="list-style-type: none"> This field may not be left blank Field may not start with a space. If the value provided contains leading spaces then all leading spaces will be trimmed from the value during further validation of the data value provided Field may only contain a valid date in the format YYYYMMDD 			
Business Rules (compliance required)			
<ul style="list-style-type: none"> Field may not have a value greater than today's date Year component of field value may not be less than 1900 			
Business Rules (informational)			
<ul style="list-style-type: none"> The system will display the maximum number of records with the same value for this field 			

5.11 Internship Placement

File code 506

File naming standard

[Code]_0006_506_v001_YYYYMMDD.dat where:

- [Code] is the submitting ETQE's mnemonic identifier as recorded on the National Learners' Records Database in the format cccc. For example AGRI indicates the Agriculture Sector Education and Training Authority.
- 0006 indicates that the recipient information system to which this data will be submitted is SETMIS.
- v001 indicates that the submission has been extracted in accordance with version 1 of this specification
- YYYYMMDD represents the date on which the data submission was created.
- .dat is the file extension

Description

This file describes all internships placements.

General information:

A count of the number of records found in the file will be recorded in the aggregated report under the General information heading.

The **Date_Stamp** field must reflect the date on which a particular record was last updated. The field will be used by the recipient system to ensure that an older version of a record does not overwrite a more recent version of a record.

Submission requirements: Submission of this file is optional.

File record length: The length of each record must be exactly 186.

File fields

Field Name	National_Id	Field Number	1
Start Position	1	Field Length	15
Content Rules			
<ul style="list-style-type: none"> • This field may be left blank • Field may not start with a space. If the value provided contains leading spaces then all leading spaces will be trimmed from the value during further validation of the data value provided • Uppercase value in field may only contain characters 1234567890 			
Business Rules (compliance required)			
<ul style="list-style-type: none"> • The combination of National_Id, Person_Alternate_Id, Alternate_Id_Type_Id, Qualification_Id, SDL_No, Provider_Code and Provider_ETQE_Id must be unique 			
Business Rules (informational)			
<ul style="list-style-type: none"> • Not applicable 			

Field Name	Person_Alternate_Id	Field Number	2
Start Position	16	Field Length	20
Content Rules			
<ul style="list-style-type: none"> • This field may be left blank • Field may not start with a space. If the value provided contains leading spaces then all leading spaces will be trimmed from the value during further validation of the data value provided • Uppercase value in field may only contain characters ABCDEFGHIJKLMNOPQRSTUVWXYZ-1234567890@_ 			

Field Name	Person_Alternate_Id	Field Number	2
Business Rules (compliance required)			
<ul style="list-style-type: none"> Not applicable 			
Business Rules (informational)			
<ul style="list-style-type: none"> Not applicable 			

Field Name	Alternate_Id_Type_Id	Field Number	3
Start Position	36	Field Length	3
Content Rules			
<ul style="list-style-type: none"> This field may not be left blank Field may not start with a space. If the value provided contains leading spaces then all leading spaces will be trimmed from the value during further validation of the data value provided Field may only contain whole numbers 			
Business Rules (compliance required)			
<ul style="list-style-type: none"> Field must contain a valid Alternate_Id_Type_Id If Alternate_Id_Type_Id = 537 then the combination of Alternate_Id_Type_Id, Person_Alternate_Id, National_Id, Provider_Code and Provider_ETQE_Id must exist in parent file 400 - Person If Alternate_Id_Type_Id <> 537 then the combination of Alternate_Id_Type_Id, Person_Alternate_Id and National_Id must exist in parent file 400 - Person 			
Business Rules (informational)			
<ul style="list-style-type: none"> Not applicable 			

Field Name	Qualification_Id	Field Number	4
Start Position	39	Field Length	10
Content Rules			
<ul style="list-style-type: none"> This field may not be left blank Field may not start with a space. If the value provided contains leading spaces then all leading spaces will be trimmed from the value during further validation of the data value provided Field may only contain whole numbers 			
Business Rules (compliance required)			
<ul style="list-style-type: none"> Field must contain a valid Qualification_Id. Must contain a valid SAQA Qualification ID as registered on the National Qualifications Framework (NQF) 			
Business Rules (informational)			
<ul style="list-style-type: none"> Not applicable 			

Field Name	Qualification_Achievement_Date	Field Number	5
Start Position	49	Field Length	8
Content Rules			
<ul style="list-style-type: none"> This field may not be left blank Field may not start with a space. If the value provided contains leading spaces then all leading spaces will be trimmed from the value during further validation of the data value provided Field may only contain a valid date in the format YYYYMMDD 			
Business Rules (compliance required)			
<ul style="list-style-type: none"> Field may not have a value greater than today's date Year component of field value may not be less than 1900 			
Business Rules (informational)			
<ul style="list-style-type: none"> The system will display the maximum number of records with the same value for this field 			

Field Name	Internship_Status_Id	Field Number	6
Start Position	57	Field Length	10
Content Rules			
<ul style="list-style-type: none"> This field may not be left blank Field may not start with a space. If the value provided contains leading spaces then all leading spaces will be trimmed from the value during further validation of the data value provided 			

Field Name	Internship_Status_Id	Field Number	6
<ul style="list-style-type: none"> Field may only contain whole numbers 			
Business Rules (compliance required)			
<ul style="list-style-type: none"> Field must contain a valid Internship_Status_Id If Internship_Status_Id does not have a value of 1 then End_Date may not be blank If Internship_Status_Id has a value of 1 then End_Date must be blank 			
Business Rules (informational)			
<ul style="list-style-type: none"> Not applicable 			

Field Name	Start_Date	Field Number	7
Start Position	67	Field Length	8
Content Rules			
<ul style="list-style-type: none"> This field may not be left blank Field may not start with a space. If the value provided contains leading spaces then all leading spaces will be trimmed from the value during further validation of the data value provided Field may only contain a valid date in the format YYYYMMDD 			
Business Rules (compliance required)			
<ul style="list-style-type: none"> Field may not have a value greater than today's date Year component of field value may not be less than 1900 			
Business Rules (informational)			
<ul style="list-style-type: none"> The system will display the maximum number of records with the same value for this field 			

Field Name	End_Date	Field Number	8
Start Position	75	Field Length	8
Content Rules			
<ul style="list-style-type: none"> This field may be left blank Field may not start with a space. If the value provided contains leading spaces then all leading spaces will be trimmed from the value during further validation of the data value provided Field may only contain a valid date in the format YYYYMMDD 			
Business Rules (compliance required)			
<ul style="list-style-type: none"> End_Date may not be greater than Start_Date Field may not have a value greater than today's date Year component of field value may not be less than 1900 			
Business Rules (informational)			
<ul style="list-style-type: none"> The system will display the maximum number of records with the same value for this field 			

Field Name	SDL_No	Field Number	9
Start Position	83	Field Length	10
Content Rules			
<ul style="list-style-type: none"> This field may not be left blank Field may not start with a space. If the value provided contains leading spaces then all leading spaces will be trimmed from the value during further validation of the data value provided Value in field may only contain characters L0123456789 OR N0123456789 			
Business Rules (compliance required)			
<ul style="list-style-type: none"> The combination SDL_No and Site_No must be valid. The combination of SDL_No and Site_No must exist on 200 - Employer 			
Business Rules (informational)			
<ul style="list-style-type: none"> Not applicable 			

Field Name	Site_No	Field Number	10
Start Position	93	Field Length	10
Content Rules			
<ul style="list-style-type: none"> This field may not be left blank 			

Field Name	Site_No	Field Number	10
<ul style="list-style-type: none"> Field may not start with a space. If the value provided contains leading spaces then all leading spaces will be trimmed from the value during further validation of the data value provided Uppercase value in field may only contain characters ABCDEFGHIJKLMNOPQRSTUVWXYZ1234567890@#&+() \/:._- 			
Business Rules (compliance required)			
<ul style="list-style-type: none"> Not applicable 			
Business Rules (informational)			
<ul style="list-style-type: none"> Not applicable 			

Field Name	Provider_Code	Field Number	11
Start Position	103	Field Length	20
Content Rules			
<ul style="list-style-type: none"> This field may not be left blank Field may not start with a space. If the value provided contains leading spaces then all leading spaces will be trimmed from the value during further validation of the data value provided Uppercase value in field may only contain characters ABCDEFGHIJKLMNOPQRSTUVWXYZ1234567890@#&+() \/:._- 			
Business Rules (compliance required)			
<ul style="list-style-type: none"> The combination Provider_Code and Provider_ETQE_Id must be valid. The combination of Provider_Code and Provider_ETQE_Id must exist on 101 - Provider 			
Business Rules (informational)			
<ul style="list-style-type: none"> Not applicable 			

Field Name	Provider_ETQE_Id	Field Number	12
Start Position	123	Field Length	10
Content Rules			
<ul style="list-style-type: none"> This field may not be left blank Field may not start with a space. If the value provided contains leading spaces then all leading spaces will be trimmed from the value during further validation of the data value provided Field may only contain whole numbers 			
Business Rules (compliance required)			
<ul style="list-style-type: none"> Field must contain a valid Provider_ETQE_Id 			
Business Rules (informational)			
<ul style="list-style-type: none"> Not applicable 			

Field Name	Funding_Id	Field Number	13
Start Position	133	Field Length	10
Content Rules			
<ul style="list-style-type: none"> This field may not be left blank Field may not start with a space. If the value provided contains leading spaces then all leading spaces will be trimmed from the value during further validation of the data value provided Field may only contain whole numbers 			
Business Rules (compliance required)			
<ul style="list-style-type: none"> Field must contain a valid Funding_Id 			
Business Rules (informational)			
<ul style="list-style-type: none"> Not applicable 			

Field Name	Cumulative_Spend	Field Number	14
Start Position	143	Field Length	10
Content Rules			
<ul style="list-style-type: none"> This field may be left blank Field may not start with a space. If the value provided contains leading spaces then all leading spaces will be trimmed from the value during further validation of the data value provided 			

Field Name	Cumulative_Spend	Field Number	14
<ul style="list-style-type: none"> Field may only contain whole numbers 			
Business Rules (compliance required)			
<ul style="list-style-type: none"> Cumulative_Spend may only have a value if Funding_Id has a value of 1 			
Business Rules (informational)			
<ul style="list-style-type: none"> Not applicable 			

Field Name	OFO_Code	Field Number	15
Start Position	153	Field Length	15
Content Rules			
<ul style="list-style-type: none"> This field may be left blank Field may not start with a space. If the value provided contains leading spaces then all leading spaces will be trimmed from the value during further validation of the data value provided Field may only contain whole numbers 			
Business Rules (compliance required)			
<ul style="list-style-type: none"> Field must contain a valid OFO_Code 			
Business Rules (informational)			
<ul style="list-style-type: none"> Not applicable 			

Field Name	Urban_Rural_ID	Field Number	16
Start Position	168	Field Length	10
Content Rules			
<ul style="list-style-type: none"> This field may not be left blank Field may not start with a space. If the value provided contains leading spaces then all leading spaces will be trimmed from the value during further validation of the data value provided Field may only contain whole numbers 			
Business Rules (compliance required)			
<ul style="list-style-type: none"> Field must contain a valid Urban_Rural_ID 			
Business Rules (informational)			
<ul style="list-style-type: none"> Not applicable 			

Field Name	Date_Stamp	Field Number	17
Start Position	178	Field Length	8
Content Rules			
<ul style="list-style-type: none"> This field may not be left blank Field may not start with a space. If the value provided contains leading spaces then all leading spaces will be trimmed from the value during further validation of the data value provided Field may only contain a valid date in the format YYYYMMDD 			
Business Rules (compliance required)			
<ul style="list-style-type: none"> Field may not have a value greater than today's date Year component of field value may not be less than 1900 			
Business Rules (informational)			
<ul style="list-style-type: none"> The system will display the maximum number of records with the same value for this field 			

6 Lookup codes

Please refer to the link “SETMIS MR file specification lookup values” at:

<https://webapps.dhet.gov.za/USUS.aspx>

The DHET has made available the following additional resources for more complicated lookup values:

1. STATSSA_Area_Code

Please refer to <https://webapps.dhet.gov.za/USUS/STATSSAAreaSearch>

2. Last_School_EMIS_No

Please refer to <https://webapps.dhet.gov.za/USUS/SchoolSearch>

7 Revision History

2016/05/04

Version 001 of specification released.

2017/05/29

Incorrect rule on File 506 which read “End_Date may not be greater than Start_Date” has been corrected to read “Start_Date may not be greater than End_Date”

All rules that referred to 20160701 have been changed to 20170701.

8 Glossary

1. **Alternate_Id_Type_Id**
Type of alternate ID provided
2. **Assessor_ETQE_Id**
ETQE of the assessor
 - The field Assessor_ETQE_Id, when provided, must be set to the ETQE ID of the SETA that is submitting the data to SETMIS.
3. **Assessor_Registration_Number**
Registration number of the assessor
4. **Certificate_Number**
Certificate number
5. **Citizen_Resident_Status_Code**
Citizenship/residential status of the person
6. **Communicating_Rating_Id**
Health and function rating related to communication
7. **Country_Code**
Country
8. **Cumulative_Spend**
Cumulative amount of funds spent
9. **Date_Stamp**
Last date on which the record was updated on the operational information system
10. **Designation_End_Date**
End date of the designation registration
11. **Designation_ETQE_Id**
ETQE at which the designation is registered - defaulted to the ETQE ID of the submitting ETQE
12. **Designation_Id**
Type of designation
13. **Designation_Registration_Number**
Registration number of allocated to the designation registration
14. **Designation_Start_Date**
Start date of the designation registration
15. **Designation_Structure_Status_Id**
Structure status of the designation registration
16. **Economic_Status_Id**
Economic status
17. **Employer_Approval_Status_End_Date**
End date of the employer approval
 - The approval related data fields in the employer file have been implemented in anticipation of policies that will define criteria and guidelines for the approval of employers that offer workplace learning.

18. Employer_Approval_Status_Id
Approval status of the employer
 - The approval related data fields in the employer file have been implemented in anticipation of policies that will define criteria and guidelines for the approval of employers that offer workplace learning.
 - Until such policies are finalized the value for this field must be set to '1' (Legacy) and the Employer_Approval_Status_Start_Date value must be set to the first date on which the SETA started to engage with the employer.
19. Employer_Approval_Status_Num
Approval status number for the employer
20. Employer_Approval_Status_Start_Date
Start date of the employer approval
 - The approval related data fields in the employer file have been implemented in anticipation of policies that will define criteria and guidelines for the approval of employers that offer workplace learning.
 - Until such policies are finalized the value for this field must be set to '1' (Legacy) and the Employer_Approval_Status_Start_Date value must be set to the first date on which the SETA started to engage with the employer.
 - This value can be derived from the date on which the employer record was created on the SETA's operational information system.
21. Employer_Company_Name
Company name of the employer
22. Employer_Contact_Cell_Number
Cell number of employer contact person
23. Employer_Contact_Email_Address
E-mail address of employer contact person
24. Employer_Contact_Name
Employer contact person
25. Employer_Contact_Phone_Number
Telephone number of employer contact person
26. Employer_Fax_Number
Fax number of the employer
27. Employer_Phone_Number
Telephone number of the employer
28. Employer_Physical_Address_1
First line of the employer physical address
29. Employer_Physical_Address_2
Second line of the employer physical address
30. Employer_Physical_Address_3
Third line of the employer physical address
31. Employer_Physical_Address_Code
Postal code of the employer physical address

32. Employer_Postal_Address_1
First line of the employer postal address
33. Employer_Postal_Address_2
Second line of the employer postal address
34. Employer_Postal_Address_3
Third line of the employer postal address
35. Employer_Postal_Address_Code
Postal code of the employer postal address
36. Employer_Registration_Number
Registration number of the employer
37. Employer_Trading_Name
Trading name of the employer
38. End_Date
End date
39. Enrolment_Date
First date of enrolment
 - Enrolment_Date must always indicate the first date on which the learner enrolled on the learnership, qualification, unit standard etc. This date should remain the same throughout all submissions – regardless of whether the status of the enrolment changes.
40. Enrolment_Status_Date
Date on which the enrolment status was allocated
 - There is a relationship between Enrolment_Status_Date and Enrolment_Status_Id. The data field Enrolment_Status_Date must hold the date on which the Enrolment_Status_Id value was set.
41. Enrolment_Status_Id
Status of the enrolment
42. Enrolment_Status_Reason_Id
Reason for the enrolment status
43. Enrolment_Type_Id
Type of enrolment
44. Equity_Code
Equity (Population Group) of the person
45. ETQE_Decision_Number
Decision number issued by the ETQE
46. Filler
Unused space in the file which must be left blank
47. Funding_Id
Type of funding
48. Gender_Code
Gender of the person

49. **Hearing_Rating_Id**
Health and function rating related to hearing
50. **Home_Language_Code**
Home language of the person
51. **Internship_Status_Id**
Status of the internship
52. **Last_School_EMIS_No**
EMIS number of the last school that the person attended
53. **Last_School_Year**
Last year in which the person attended school
54. **Latitude_Degree**
Latitude degrees of GPS reading
55. **Latitude_Minutes**
Latitude minutes of GPS reading
56. **Latitude_Seconds**
Latitude seconds of GPS reading
57. **Learnership_Id**
Learnership ID as published by SAQA
58. **Longitude_Degree**
Longitude degrees of GPS reading
59. **Longitude_Minutes**
Longitude minutes of GPS reading
60. **Longitude_Seconds**
Longitude seconds of GPS reading
61. **Main_SDL_No**
SDL No of main/parent employer
 - **Main_SDL_No** refers to the parent organisation and **SDL_No** would refer to the child organisation in a record where **Main_SDL_No** is not the same as the **SDL_No**. A “parent” or “childless” organisation would have the **Main_SDL_No** value the same as the **SDL_No** for the record.
62. **Moderator_ETQE_Id**
ETQE of the moderator
 - The field **Moderator_ETQE_Id**, when provided, must be set to the ETQE ID of the SETA that is submitting the data to SETMIS.
63. **Moderator_Registration_Number**
Registration number of the moderator
64. **Most_Recent_Registration_Date**
Most recent registration date
 - The value in this field has significance in regard to whether a record is included in reports that measure the overall performance of a SETA for a specific period. For enrolments that have a credit value that translates to a training period that exceeds the boundaries of the initial

reporting period (which is derived from Enrolment_Date) the DHET requires this value as an indicator as to when last the SETA received confirmation that the enrolment was still active.

- For example, if a learner enrolled on a three year qualification on 17 September 2014 (at enrolment the Most_Recent_Registration_Date is equal to Enrolment_Date), the DHET needs to have positive confirmation that the learner was still active on the enrolment for 2015, 2016 and 2017. In a traditional education environment this field would generally contain the last date on which the learner registered for the qualification at the institution (at the start of the year, semester or trimester).
- The DHET is aware that the nature of skills training does not necessarily follow the same type of structure, however in order to include an enrolment into a period after the initial reporting period this data field must provide the last date on which the SETA had (auditable) confirmation that the learner was still actively enrolled. The SETA should be able to obtain this type of information from attendance registers and progress reports that are submitted to the SETA for processing of payments etc.

65. National_Id
SA National ID

66. Nationality_Code
Nationality of the person

67. Non_NQF_Interv_Code
Unique identifier for the non NQF Intervention

- This is a unique identifier defined by the SETA.

68. Non_NQF_Interv_Credit
Credits for the non NQF Intervention

- The approximate credits for a Non NQF intervention must be allocated by the SETA on the basis that one credit is equivalent to ten notional hours of learning and 120 credits represent a year of study.

69. Non_NQF_Interv_ETQE_Id
ETQE for the non NQF Intervention - defaulted to the ETQE ID of the submitting ETQE

- The field Non_NQF_Interv_ETQE_Id must be set to the ETQE ID of the SETA that is submitting the data to SETMIS.

70. Non_NQF_Interv_Name
Name of the non NQF Intervention

71. Non_NQF_Interv_Reg_End_Date
Registration end date for the non NQF Intervention

72. Non_NQF_Interv_Reg_Start_Date
Registration start date for the non NQF Intervention

73. Non_NQF_Interv_Status_Id
Status of the non NQF Intervention

74. OFO_Code
OFO Code

- In all instances the 11 digit OFO code must be used.
- The DHET is able to provide guidance in regard to how these codes can be derived from existing OFO Codes.
- The version of the OFO Code used prior to the implementation of SETMIS (i.e. legacy data for the years 2010 to 2015) is at the discretion of the SETA.

- Once SETMIS has been implemented the DHET will define which version of the OFO must be used and the specific time periods for the utilization of the version of the OFO.

75. Part_Of_Id

Indicator as to whether the enrolment is part of another enrolment

- Learners that have enrolled on learnerships must have a record in the Learnership Enrolment file (for the learnership enrolment) and a record in the Qualification Enrolment file (for the related qualification enrolment, the Part_Of_Id for the record must be set to '3' and the Learnership ID must be provided in the Learnership_ID field).
- Enrolments against skills programmes must be submitted to SETMIS in the Non NQF Intervention Enrolment file. In the Non NQF Intervention Enrolment file - for a skills programme enrolment that is not linked to a qualification the 'Part Of' value for the record may not be '(Part of a) Qualification' and the Qualification ID for the record must be left blank.
- A standalone qualification enrolment record must be submitted in the Qualification Enrolment file with the 'Part Of' value set to 'Miscellaneous "stand-alone"' and the Learnership ID for the record must be left blank.

76. Person_Alternate_Id

Alternate ID of the person

77. Person_Birth_Date

Birth date of the person

78. Person_Cell_Phone_Number

Cell phone number of the person

79. Person_Email_Address

Email address of the person

80. Person_Fax_Number

Fax number of the person

81. Person_First_Name

First name of the person

82. Person_Home_Addr_Postal_Code

Postal code of the person's home address

83. Person_Home_Address_1

First line of the person's home address

84. Person_Home_Address_2

Second line of the person's home address

85. Person_Home_Address_3

Third line of the person's home address

86. Person_Last_Name

Last name of the person

87. Person_Middle_Name

Middle name/s of the person

88. Person_Phone_Number

Phone number of the person

-
89. Person_Postal_Addr_Post_Code
Postal code of the person's postal address
90. Person_Postal_Address_1
First line of the person's postal address
91. Person_Postal_Address_2
Second line of the person's postal address
92. Person_Postal_Address_3
Third line of the person's postal address
93. Person_Previous_Alternate_Id
Previous alternate ID of the person - used in the case of mergers or system changes
94. Person_Previous_Alternate_Id_Type_Id
Previous alternate ID type ID of the person - used in the case of mergers or system changes
95. Person_Previous_Lastname
Previous last name of the person
96. Person_Previous_Provider_Code
Previous provider code of the person - used in the case of mergers or system changes
97. Person_Previous_Provider_ETQE_Id
Previous provider ETQE ID of the person - used in the case of mergers or system changes
98. Person_Title
Title of the person
99. POPI_Act_Status_Date
Date on which the POPI Status was allocated
- Until the POPI Act has been implemented the DHET expects all records to have a POPI_Status_ID = 0 (which represents N/A) and a blank POPI_Act_Status_Date.
 - Once the POPI Act has been implemented the SETMIS MR specifications will be updated to include a new business rule that requires a POPI_Status_ID value not equal to 0 (which represents N/A) if the Date_Stamp of the record succeeds the implementation date of the POPI Act.
100. POPI_Act_Status_ID
POPI Status for the person
- Until the POPI Act has been implemented the DHET expects all records to have a POPI_Status_ID = 0 (which represents N/A) and a blank POPI_Act_Status_Date.
 - Once the POPI Act has been implemented the SETMIS MR specifications will be updated to include a new business rule that requires a POPI_Status_ID value not equal to 0 (which represents N/A) if the Date_Stamp of the record succeeds the implementation date of the POPI Act.
101. Practical_Provider_Code
Provider code of the practical provider
102. Practical_Provider_ETQE_Id
Provider ETQE ID of the practical provider
103. Provider_Accreditation_Num
Accreditation number of the provider

- 104.Provider_Class_Id
Class of the provider
- This data field is derived directly from the same field as used for submissions to the NLRD. The relevant lookup values can be found in the lookups list that accompanies the specification.
- 105.Provider_Code
Provider code of the provider
- 106.Provider_Contact_Cell_Number
Cell number of provider contact person
- 107.Provider_Contact_Email_Address
E-mail address of provider contact person
- 108.Provider_Contact_Name
Provider contact person
- 109.Provider_Contact_Phone_Number
Telephone number of provider contact person
- 110.Provider_End_Date
End date of the provider's accreditation
- 111.Provider_ETQE_Id
ETQE ID of the provider
- 112.Provider_Fax_Number
Fax number of the provider
- 113.Provider_Name
Name of the provider
- 114.Provider_Phone_Number
Phone number of the provider
- 115.Provider_Physical_Address_1
First line of the provider physical address
- 116.Provider_Physical_Address_2
Second line of the provider physical address
- 117.Provider_Physical_Address_3
Third line of the provider physical address
- 118.Provider_Physical_Address_Code
Postal code of the provider physical address
- 119.Provider_Postal_Address_1
First line of the provider postal address
- 120.Provider_Postal_Address_2
Second line of the provider postal address
- 121.Provider_Postal_Address_3
Third line of the provider postal address

- 122.Provider_Postal_Address_Code
Postal code of the provider postal address
- 123.Provider_Sars_Number
Sars number of the provider
- 124.Provider_Start_Date
Start date of the provider's accreditation
- 125.Provider_Status_Id
Status of the provider
- This data field is derived directly from the same field as used for submissions to the NLRD. The relevant lookup values can be found in the lookups list that accompanies the specification.
- 126.Provider_Type_Id
Type of the provider
- This data field is derived directly from the same field as used for submissions to the NLRD. The relevant lookup values can be found in the lookups list that accompanies the specification.
- 127.Provider_Website_Address
Website address of the provider
- 128.Province_Code
Province
- 129.Qualification_Achievement_Date
Achievement date of the qualification
- 130.Qualification_Id
Qualification ID as published by SAQA
- 131.Remembering_Rating_Id
Health and function rating related to remembering
- 132.SDL_No
SDL Number
- SETMIS only accommodate organisations with L numbers and N numbers. L Numbers are SDL numbers that are issued by SARS to levy paying organisations. N numbers are unique identifiers that each SETA allocates to a non-levy paying organisation. The identifier does not need to be known to the organisation (in other words it may be a unique key that is generated on the operational information system of the SETA), the identifier must however be unique to the SETA. Within the domain of SETMIS non-levy paying organisations will be uniquely identified by their combination of N number and SETA_ID.
- 133.Seeing_Rating_Id
Health and function rating related to seeing
- 134.Self_Care_Rating_Id
Health and function rating related to self-care
- 135.SETA_Id
SETA ID
- SETA_Id in the employer file must be set to the SETA_ID of the SETA that is submitting the data to SETMIS.
- 136.SIC_Code

SIC/Standard Industry Code

137.Site_No

Site number

- The Site_No has been implemented to ensure identification of various employer sites and each regional office of a specific employer should have a unique Site_No (allocated by the SETA). The number of sites associated to an employer is unlimited and each site should be submitted in the employer file.

138.Start_Date

Start date

139.STATSSA_Area_Code

STATSSA area

140.Subfield_Id

Subfield

- This information is required in order to allow the DHET to differentiate between different types of Non NQF aligned interventions for reporting purposes. The DHET understands that this information will be inaccurate but by providing this type of information the DHET will be able to gain some understanding of the type and nature of the non NQF interventions that are being offered in each sector.

141.Trade_Test_Date

Test date

142.Trade_Test_Number

Test number

143.Trade_Test_Provider_Code

Provider code of the provider at which the trade test was conducted

144.Trade_Test_Provider_ETQE_Id

ETQE ID of the provider at which the trade test was conducted

145.Trade_Test_Result_Id

Result of the trade test

146.Trade_Test_Result_Reason_Id

Reason for the trade test result

147.Unit_Standard_Id

Unit Standard ID as published by SAQA

148.Urban_Rural_ID

Urban/Rural indicator

- Currently no standardized classification of urban/rural exists and the classification thereof will remain at the discretion of the ETQE.

149.Walking_Rating_Id

Health and function rating related to walking

150.Learning_Programme_Type_Id

This is the intervention type and can be a Bursary, TVET Placement, University Placement, Candidacy, Recognition of Prior Learning, Lecturer Development etc.

This information has been requested such that it can be easier to report on the indicators without additional manipulation of the data, as standard definitions cannot guarantee the same

interpretations. For example, decoding what is a TVET placement on the basis of qualifications that are offered at a TVET college is not conclusive, since there is an overlap on what is offered at a TVET College and a University institution